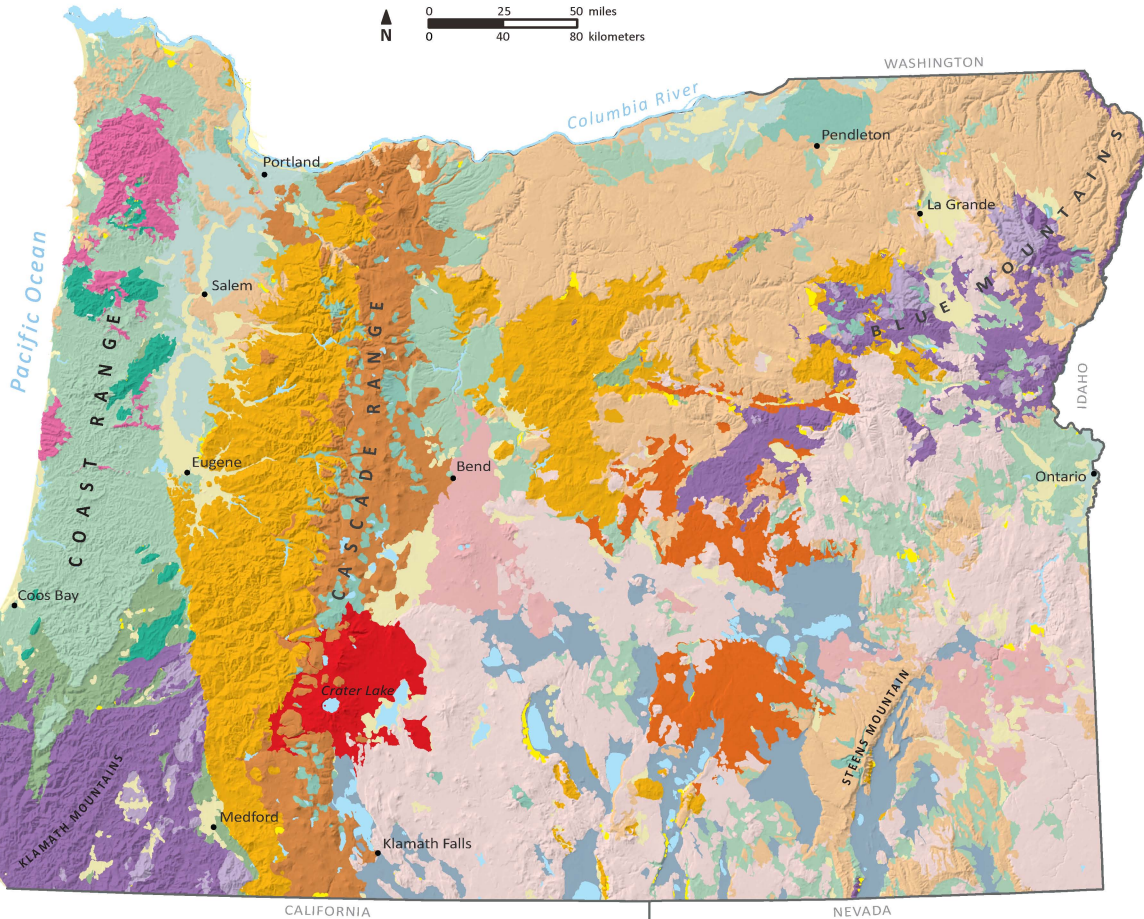
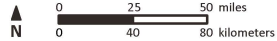


# GENERALIZED GEOLOGIC MAP OF OREGON



## LEGEND

- Quaternary landslide deposits
- Quaternary alluvium, terrace, beach, and dune deposits
- 7.7-ka Mt. Mazama eruption (Crater Lake) tephra deposits
- Quaternary till, outwash, and loess deposits
- Quaternary Missoula and Bonneville flood deposits
- Quaternary pluvial lake deposits
- Quaternary basalt volcanoes
- Quaternary arc volcanic rocks
- Neogene terrestrial sedimentary rocks
- 7-Ma Rattlesnake ash flow tuff
- Neogene hotspot and rift volcanics
- Miocene Columbia River Basalt flows
- Eocene to Pliocene arc volcanic rocks
- Eocene basalt flows and intrusions
- Eocene to Miocene marine sedimentary rocks
- Eocene accreted volcanic arc
- Cretaceous-Paleocene marine and terrestrial sedimentary rocks
- Jurassic-Cretaceous intrusions
- Devonian to Cretaceous mélange and accreted terranes
- Waterbodies

This map depicts major events in the geologic history of Oregon by merging rock units taken from the Oregon Geologic Data Compilation (2009). To access the digital interactive geologic map of Oregon, go to <http://www.oregongeology.org/>

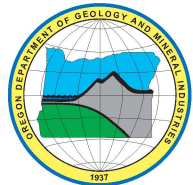
DOGAMI publications can be purchased from:

**Nature of the Northwest**

800 NE Oregon Street #28, Suite 965

Portland, OR 97232-2162

<http://www.NatureNW.org>



*DOGAMI's mission is to provide earth science information and regulation to make Oregon safe and prosperous.*