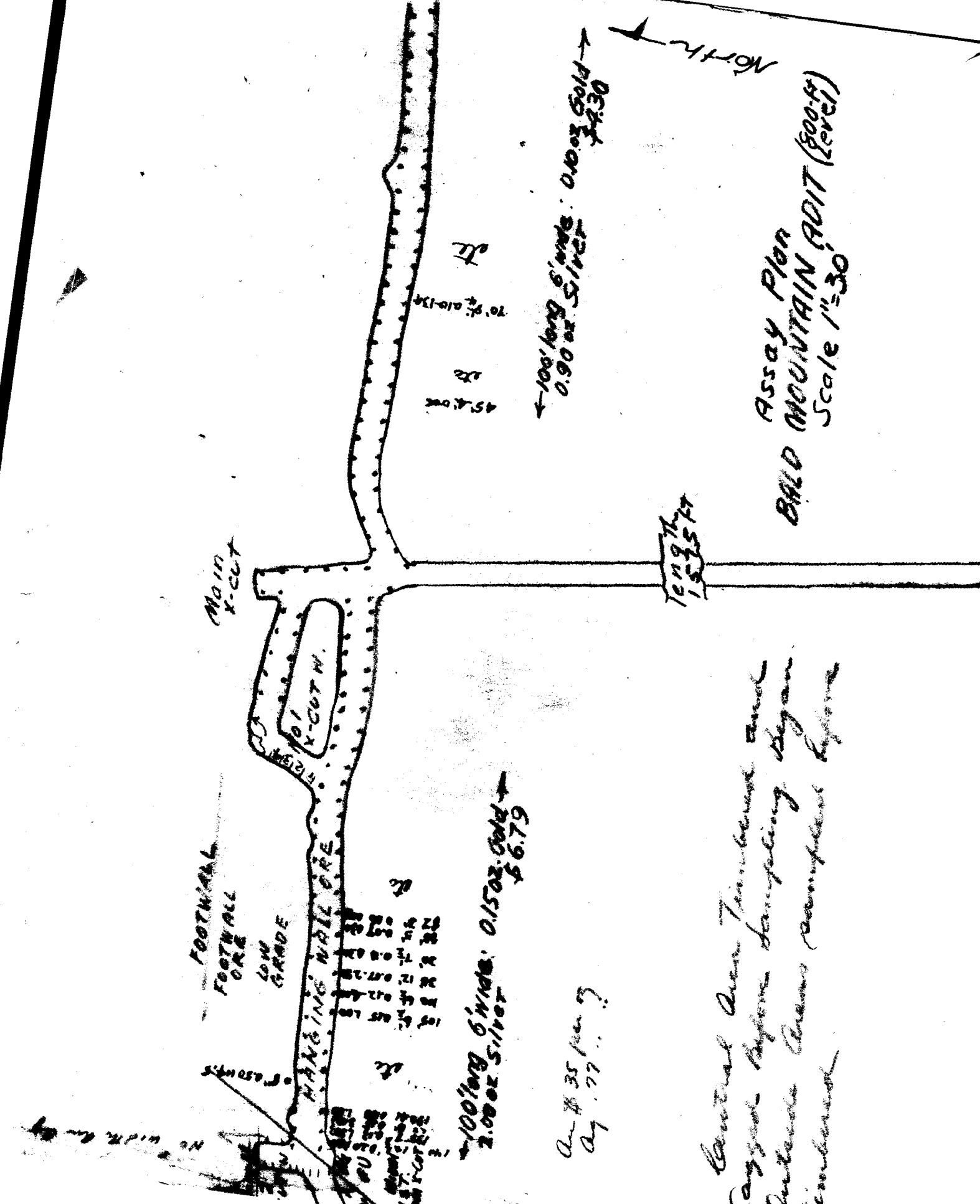


- + GRANITES, *Granodiorite, Diorite, Gabbro, gneiss, Diabase, serpentine*
- / ARGILLITES, *some Semistones and Old lacas.*

Geology of the Area in
 the Neighborhood of the
 IBEZ-BALD MOUNTAIN MINE
 Scale: Six Miles to the Inch

From report of Edwin Campbell, min. eng. Vancouver, B.C. Aug 24, 1937



Main X-CUT

101' X-CUT W.

FOOTWALL ORE
LOW GRADE

HANGING WALL ORE

100' long 6" wide: 0.1502 Gold
2.00 oz Silver \$6.79

on # 35 per 3
Ag. 77

Control over Timberland and Logging before sampling began. Antelope Creek complex before timberland.

45.4 oz
70' x 6" wide: 0.10-134
12

100' long 6" wide: 0.1003 Gold
0.90 oz Silver \$4.30

109' long
15.25 oz

Assay Plan
BALD MOUNTAIN ADIT (800-4)
Scale 1" = 30'

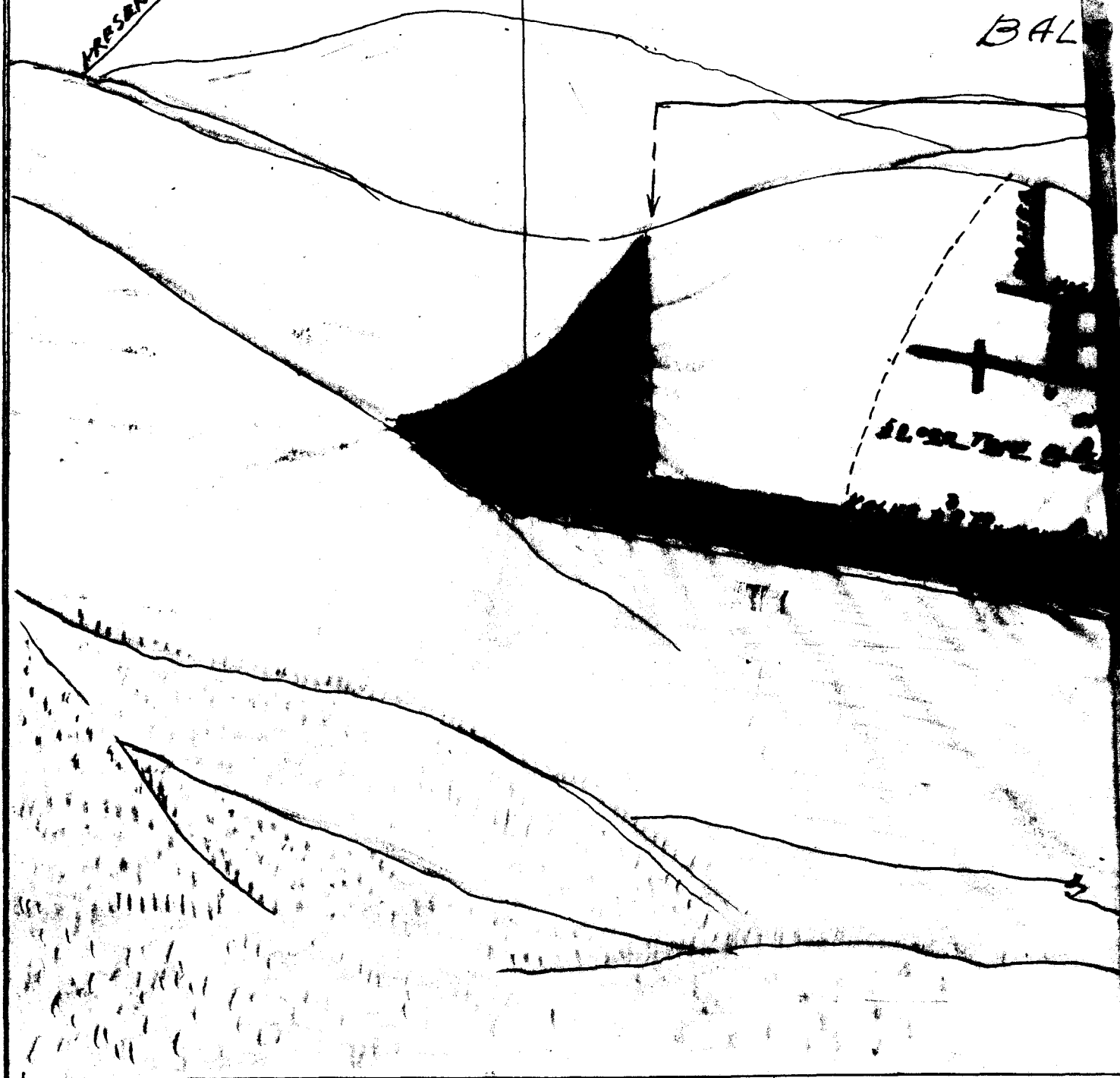
North

②

PRESENT PORTAL OF IBEX MINE

IBEX CLAY RAILROAD TUNNEL

BAL



SKETCH PLAN OF
 IBEX-BALD MOUNTAIN CONSOLIDATION
 OREGON, U.S.A.



IBEX MINE.

PROPOSED RAISE
BOUNDARY BET. IBEX
AND BALL MOUNTAIN MINES

PROPOSED MAIN
HAULAGE TUNNEL

MILL AND CRAMP
POST FROM MILL TO
MAIN TUNNEL
ROAD

COUNTRY ROCK REMOVED TO EXPOSE ORE ZONE AND MINE WORKINGS.

GRANT BAKER CO.

OLD 100' SHAF
AUTOCROP 1500' 3' TO 10' WIDE

HIGH GRADE SHIPPING
AND HANDLING WALL
SITE TOWER
SACKING HIGH GRADE
HERE - VALUE \$200+

HIGH GRADE
ROCK
HANDLING
WALL
RAISE
HIGH GRADE

ZONE

51 \$3100 AU
1620 AU

RAISE \$2000 in AU and AU

ROCK \$3000+

ROCK \$1000 AU
600 AU

CAVING

ORE

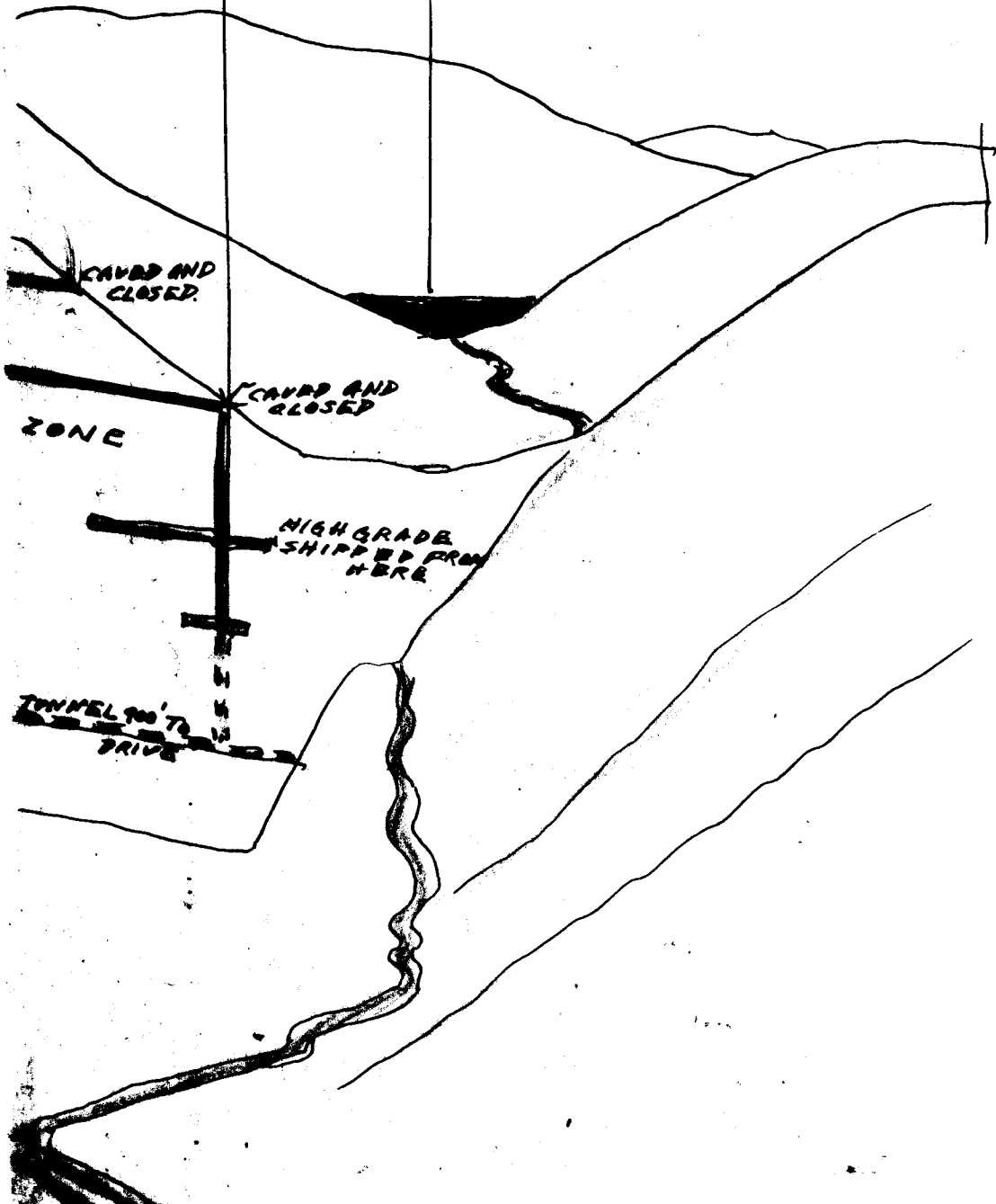
20
STONE
MILL

DATED MINES.

OLD WORKINGS
OF BALL COT
MINE

LAKE

BHP
10 UNTAIN MINE



CAVED AND
CLOSED.

CAVED AND
CLOSED

ZONE

HIGH GRADE
SHIPPED FROM
HERE

TUNNEL 900 TO
DRIVE