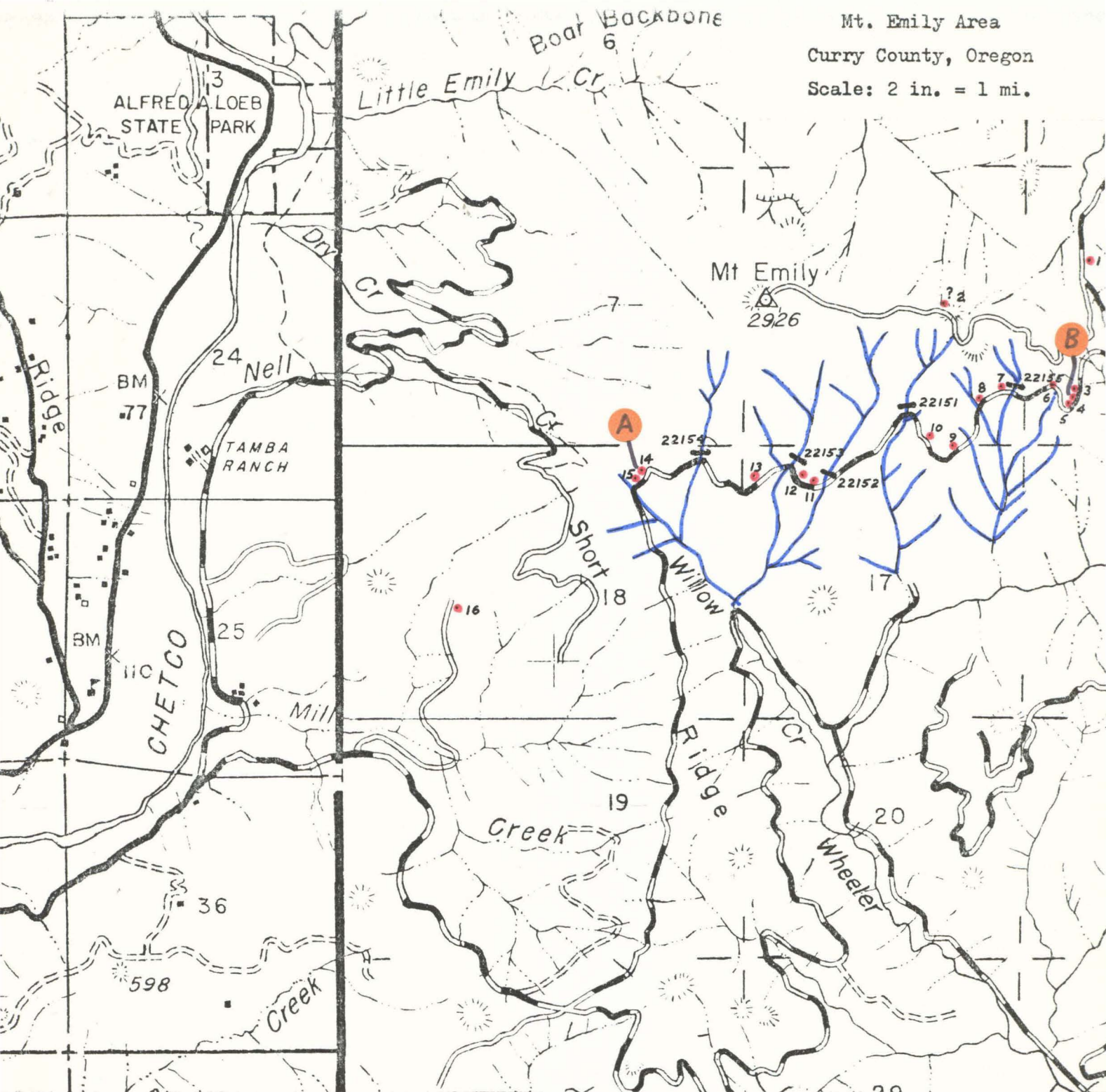


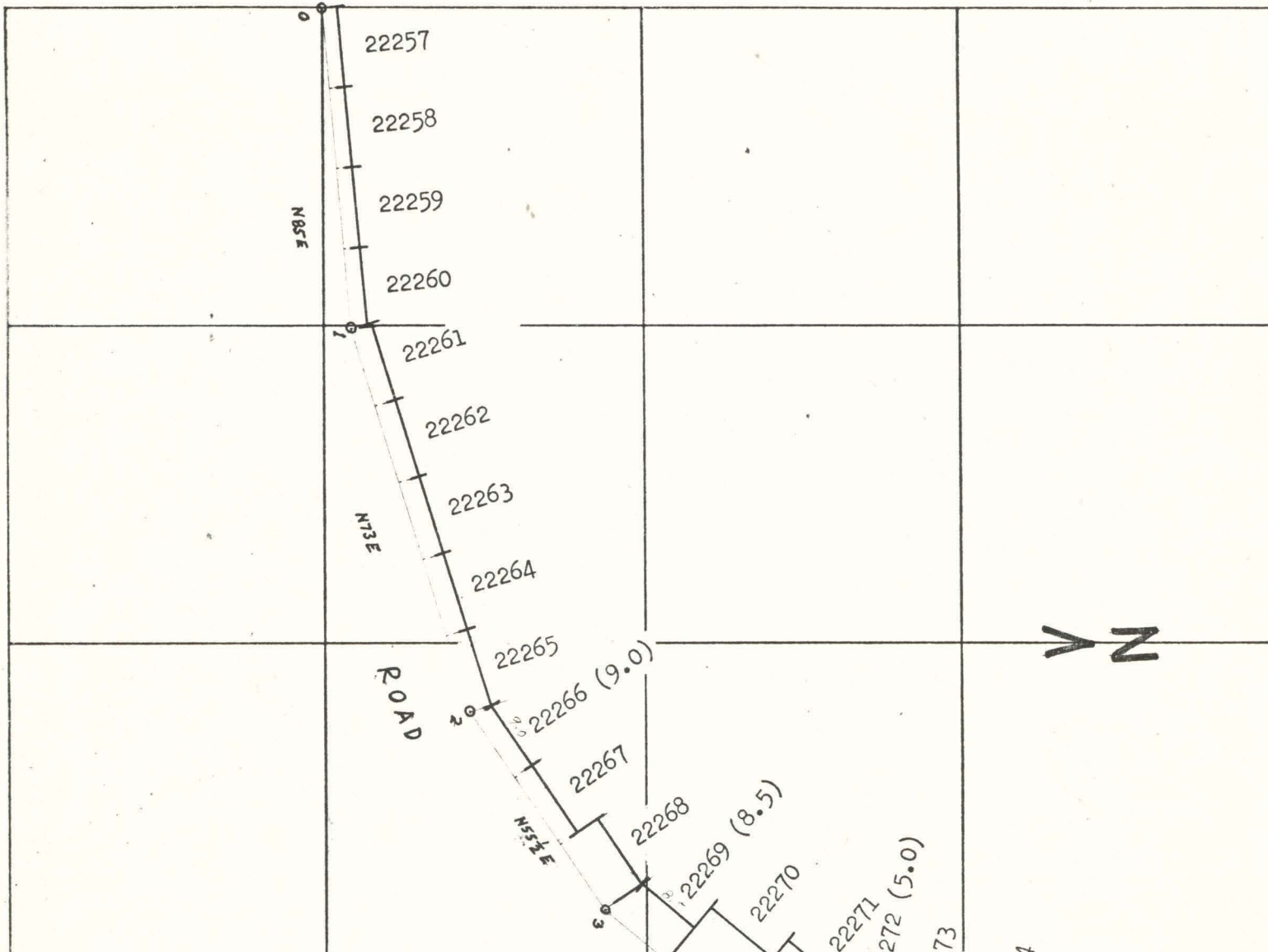


Mt. Emily Area
Curry County, Oregon
Scale: 2 in. = 1 mi.



SAMPLE RESULTS

Stream sediments ()								Road cut grab samples ()						
Sample No.	Au ppb	Ag ppm	Cu ppm	Mo ppm	Zn ppm	As ppm	Hg ppb	Sample No.	Au ppb	Ag ppm	Cu ppm	Mo ppm	As ppm	Hg ppb
22151	-5	1.1				140	110	1	10	0.4	11	2	2	30
22152	-5	1.3	50	2	76	30	40	2	30	0.4	35	20	750	12
22153	-5	1.2	47	2	56	25	35	3	10	0.3	7	2	20	+50
22154	-5	1.2	52	2	72	65	60	4	10	0.2	27	2	270	+50
22155	-5	1.2	34	1	44	70	900	5	15	0.4	104	2	150	13
								6	20	0.2	33	1	180	26
								7	5	0.3	23	1	120	47
								8	115	0.2	27	1	650	30
								9	5	-0.2	19	2	90	70
								10	5	-0.2	4	1	12	14
								11	30	-0.2	20	3	80	10
								12	-5	0.3	14	2	15	18
								13	-5	-0.2	2	ND	2	57
								14	30	0.2	14	4	800	+50
								15	35	0.2	29	3	380	30



Sample No.	Au ppb	Ag ppm	Cu ppm	Mo ppm	As ppm	Hg ppb
22197	15	0.7	10	2	+1000	6500
22257	75	0.8	23	2	500	9000
22258	20	0.5	8	2	110	8300
22259	60	0.6	7	2	35	3410
22260	30	0.5	14	2	45	1000
22261	20	0.5	13	1	12	900
22262	40	0.5	11	3	35	690
22263	105	0.6	9	14	140	650
22264	65	0.6	11	15	35	1120
22265	15	0.6	13	2	120	500
22266	20	0.7	10	3	45	400
22267	15	0.5	8	12	110	980
22268	10	0.7	9	9	20	3600
22269	20	0.8	11	3	20	4000
22270	10	0.8	9	9	38	5100
22271	35	0.7	13	2	110	5300
22272	15	0.6	19	3	70	5700
22273	20	0.4	9	2	210	6700
22274	80	0.7	15	3	750	5500
22275	30	0.9	18	4	+1000	9400

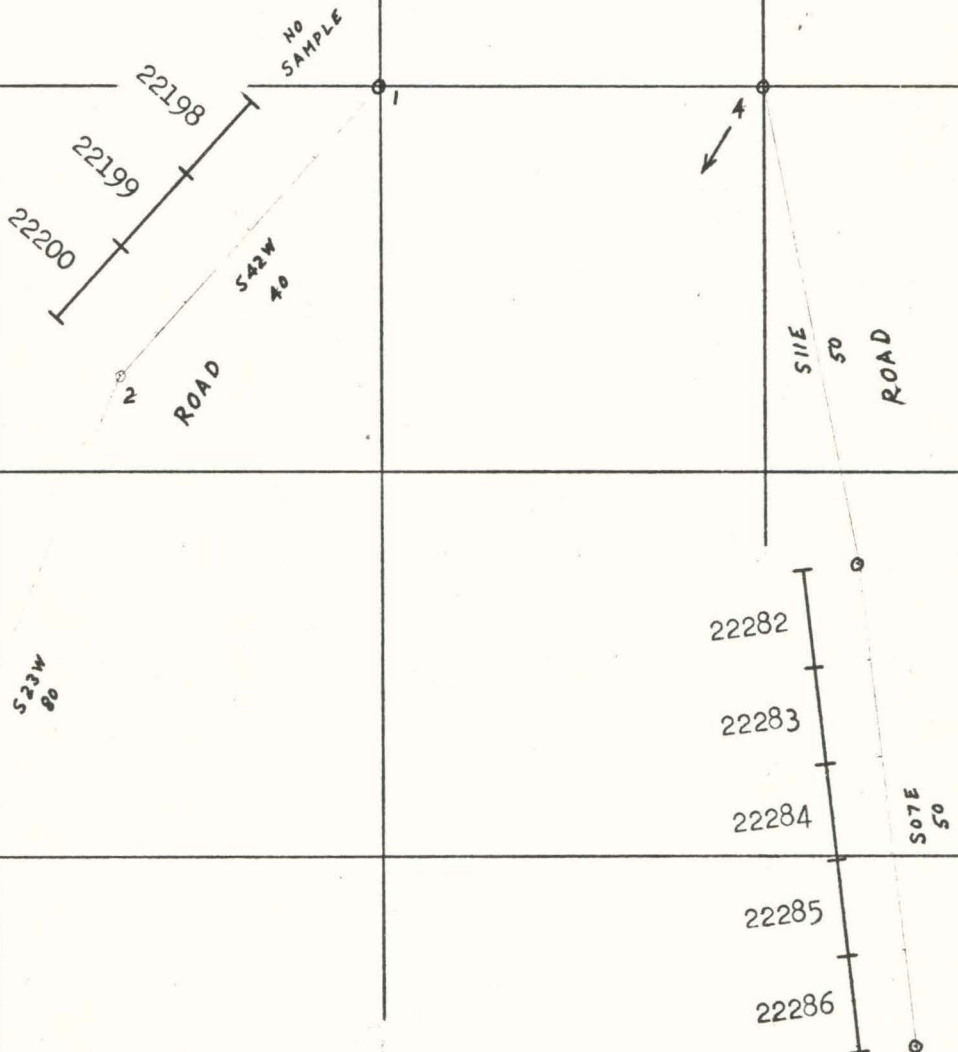
MINE MT. EMILY AREA

NOTES BY RCP

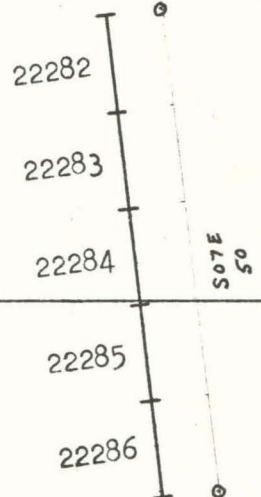
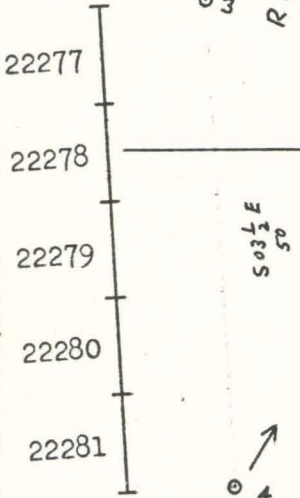
SCALE 1" = 30'

LEVEL ROAD CUT "A"

DATE 9/30/75



Sample No.	Au ppb	Ag ppm	Cu ppm	Mo ppm	As ppm	Hg ppb
22198	20	0.6	12	2	15	4250
22199	20	0.5	15	2	15	4500
22200	20	0.6	32	3	140	8700
22277	5	0.6	34	2	220	6200
22278	-5	0.5	32	2	70	5900
22279	-5	0.6	26	1	45	2000
22280	10	0.8	30	1	70	4300
22281	35	0.6	30	1	140	4400
22282	20	0.6	42	1	210	12000
22283	25	0.7	24	1	65	2330
22284	10	0.7	43	2	170	2800
22285	25	0.8	68	2	420	6600
22286	5	2.0	120	2	220	1100



MINE MT. EMILY AREA

NOTES BY RCP

SCALE 1" = 20'

LEVEL ROAD CUT "B"

DATE 10/1/75