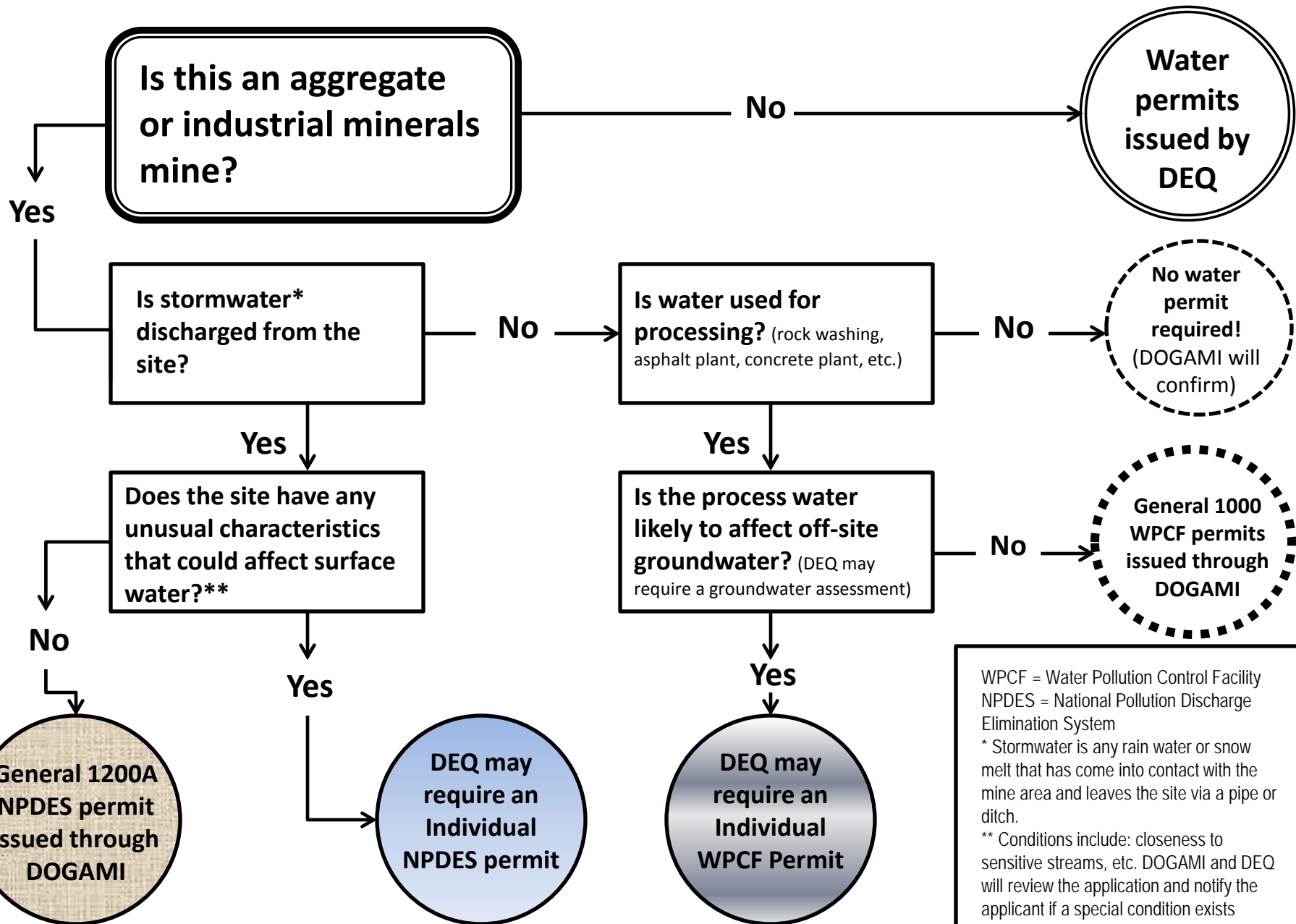


# Flow Chart of Water Permit Requirements for Mine Sites



WPCF = Water Pollution Control Facility  
NPDES = National Pollution Discharge Elimination System

\* Stormwater is any rain water or snow melt that has come into contact with the mine area and leaves the site via a pipe or ditch.

\*\* Conditions include: closeness to sensitive streams, etc. DOGAMI and DEQ will review the application and notify the applicant if a special condition exists