

WELL NAME: HAMBERG 1 RD 1
 COMPANY: REICHHOLD ENERGY CORPORATION
 AREA: 1ST- NEHALEV BASIN
 LOCATION: 209'N & 61'W OF E 2 CRN SEC 14; T6; R5; OF W&M
 COUNTY, STATE: COLUMBIA CO., ORE.

- WEGE -
WESTERN GEO-ENGINEERS
 "A SERVICE TO THE OIL AND GAS INDUSTRY"

LITHOLOGY SYMBOLS
 Sand, Clay, Silt, Silty Sand, Silty Clay, Silty Shale, Shell, Lignite, Vol. Calc, Intra. Silty, Salt, Limestone, Chert

REMARKS
 WELL ELEV. GL. 222.1'
 SALINITY IN KB. 2.5'
 FILTRATE IN CC/30 MIN.
 GAS TRAP AGITATOR TYPE
 MUD LIGHT SULPHATE (2.41%)
 PAUL GRAHAM DRILLING CO.

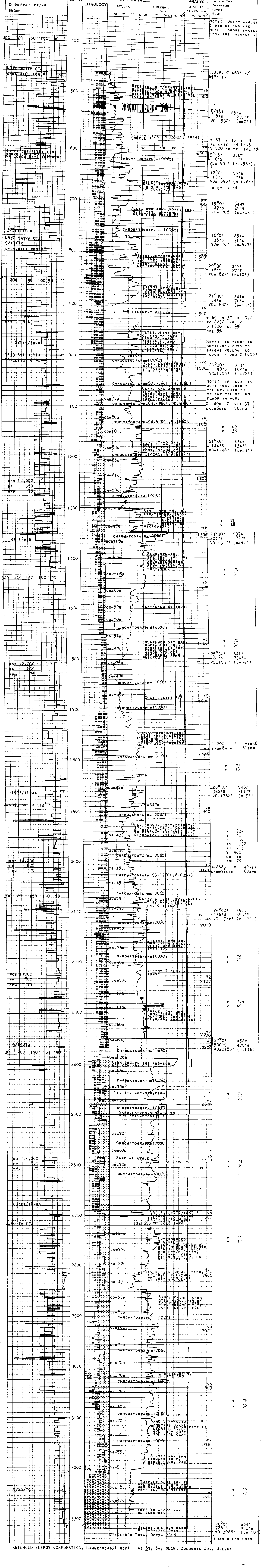
LEGEND
 S SALINITY RESISTIVITY
 R FILTRATE RESISTIVITY
 BIT DATA
 NB NEW BIT
 RRB REVERSE BIT

OTHER DATA
 CB CORE BIT
 WLCB WIRE LINE CB
 TC TRIP GAS CONNECTION GAS
 C CARRIAGE GAS

CR CIRCULATE RETURNS
 NR NO RETURN
 DST DRILL STEM TEST
 [] DST INTERVAL
 [] CORE INTERVAL

DATE 9/16/79 to 9/24/79 **DEPTH** 460' to 3318' **ENGINEERS** JONVERSE, BUTLER

CASING
 7" TO 36"
 TO
 TO



REICHHOLD ENERGY CORPORATION, HAMBERG #1 RD #1, 14; 6N, 5W, W&M, COLUMBIA CO., OREGON