

COMPANY MILLER DRILLING COMPANY  
WELL BIRSELL #1  
FIELD WILDCAAT  
COUNTY BUREAU STATE OREGON

DATE 8-22-79  
LOG MEASURED FROM 8-7' Above Perm. Datum  
DIPLOMATIC  
LOG MEASURED FROM 8-7' Above Perm. Datum  
G.I. 372

Run No. 01  
Service Order No. 83102  
Fluid Level FULL  
Salinity ppm. cl 100  
EQUIPMENT DATA  
Panel No. 00-45Z  
Cartridge No. 24-47  
Sonde No. 24-35  
Mem. Panel No. 24-243  
G.R. Panel No. 1111111  
Tape Recorder - (TR) 1111111  
Depth Encoder - (DRE) 1111111  
Pressure Wheel - (CPM) 1111111  
Type Centralizers 1111111  
Stand Off - Inches 1111111

LOGGING DATA  
SBR 1  
Sonde Error Log - ILM 9.8  
Sonde Error Log - ILD 7.7  
G.R. Scale per 100 Div. 106  
G.R. - T.C. Log 106

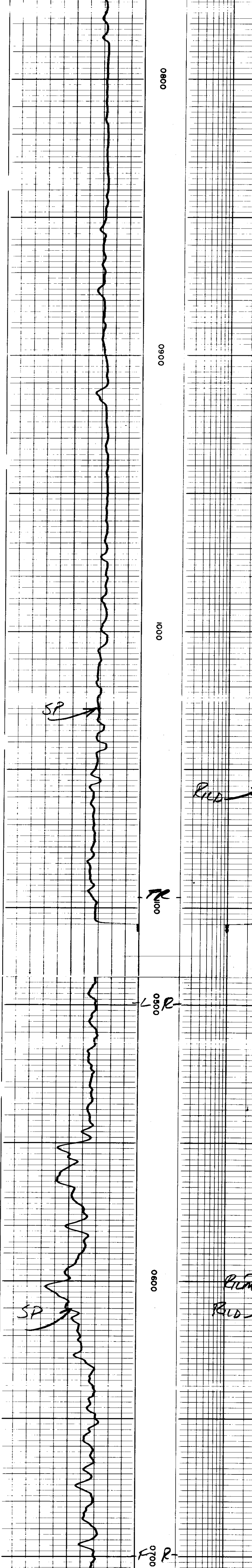
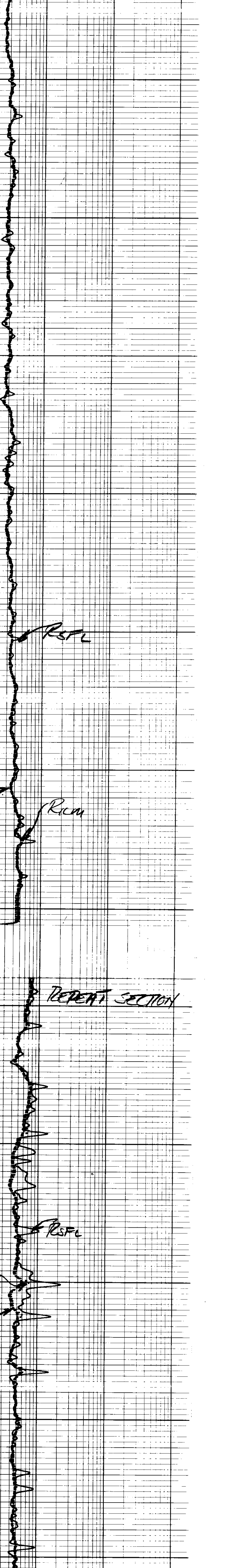
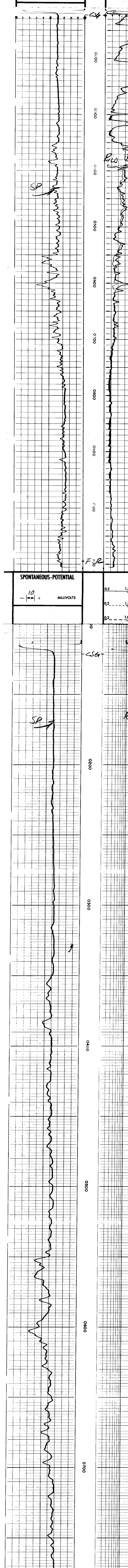
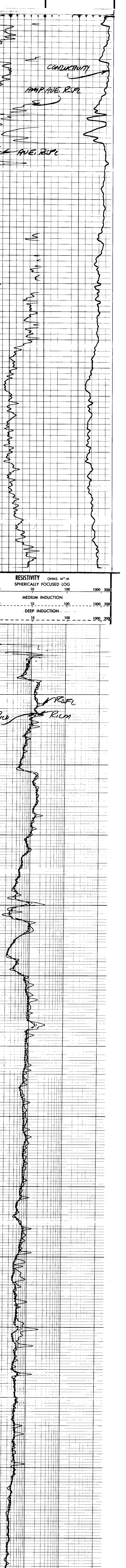
SPONTANEOUS POTENTIAL  
SBR 1  
Sonde Error Log - ILM 9.8  
Sonde Error Log - ILD 7.7  
G.R. Scale per 100 Div. 106  
G.R. - T.C. Log 106

SCALE CHANGES

Type Log	Depth	Scale Up Hole	Scale Down Hole

REMARKS  
SP RECORDED 1.5 FT. SHALLOW

SPONTANEOUS POTENTIAL  
MILLIVOLTS  
10



6 DL AFTER SURVEY CALIBRATION  
5