



INDUCTION • ELECTRIC LOG

COMPANY REICHOLD ENERGY CORPORATION
WELL COLUMBIA COUNTY NO. 5

FIELD NEHALEM BASIN
COUNTY COLUMBIA STATE OREGON
Location 963' SOUTH & 1318' EAST
FROM NORTHWEST CORNER OF
(W.B.M.)
DIP

Permanent Datum SL Elev. KB 947.62
Drilling Measured From KB D.F. 936.2
Date 6-28-79
Run No. ONE
Depth-Driller 3116
Blm. Log Inter. 3102
Top Log Inter. 400

Casing-Driller 400
Casing-Welex 400
Bit Size 6 1/4
Type Fluid in Hole LIQUID SULF
Dens. Visc. 7.5 1.43
pH 1 Fluid Loss N/A
Source of Sample
R₁@ Meas. Temp 4.60 @ 83 F
R₂@ Meas. Temp 4.10 @ 75 F
R₃@ Meas. Temp 3.02 @ 74 F
Source R₁ Meas. PASURED
R₂@ BHT 3.20 @ 119 F
R₃@ BHT 4.12 @ 119 F
Time Since Circ 4 1/2 HOURS
Max. Rec. Temp. 119 F @ BHT
Equip. Location 9450 (VADLAND)
Recorded by KENNEDY
Witnessed by KERNIC, CLARE, BRUER, FRY

Scale Changes
Type Log Depth Scale Up Hole Scale Down Hole

Equipment Data
Run No. ONE
Tool Type and No. IEL 11242
Pad Type
Tool Position FREE
Other

Service Ticket No. 048884
Change in Mud Type or Additional Samples
Date Sample No. Type Fluid in Hole

Dens. Visc. ml
pH Fluid Loss
Source of Sample
R₁@ Meas. Temp
R₂@ Meas. Temp
R₃@ Meas. Temp
Source: R₁ R₂ R₃
R₁@ BHT 3.20 @ 119 F
R₂@ BHT 4.12 @ 119 F
R₃@ BHT 3.12 @ 119 F

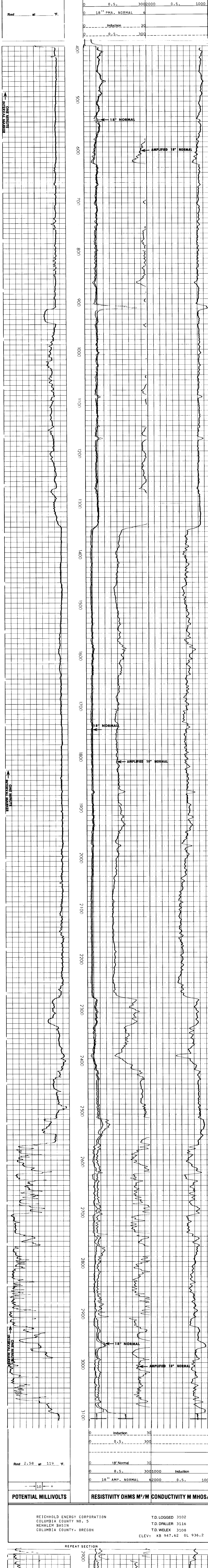
Welex does not guarantee the accuracy of any interpretation of log data, conversion of log data to physical rock parameters, or recommendations which may be given by Welex personnel or which may appear on the log or in any other form. Any user of such data, interpretations, conversions or recommendations agrees that Welex is not responsible, except where due to gross negligence or willful misconduct, for any loss, damages or expenses resulting from the use thereof.

2" = 100'

POTENTIAL MILLIVOLTS

RESISTIVITY OHMS M²/M CONDUCTIVITY M MHOS/M

0 18" Normal 301000 Induction 0
0 0.S. 3002000 0.S. 1000
0 18" PMA. NORMAL 6
0 Induction 30
0 0.S. 300



Rmf 2.58 at 119 F.

POTENTIAL MILLIVOLTS

RESISTIVITY OHMS M²/M CONDUCTIVITY M MHOS/M

0 18" Normal 30
0 0.S. 3001000 Induction 0
0 18" AMP. NORMAL 62000 0.S. 1000

REICHOLD ENERGY CORPORATION
COLUMBIA COUNTY NO. 5
NEHALEM BASIN
COLUMBIA COUNTY, OREGON

T.D. LOGGED 3102
T.D. DRILLER 3116
T.D. WELEX 3108
ELEV: KB 947.62 GL 936.2

REPEAT SECTION

