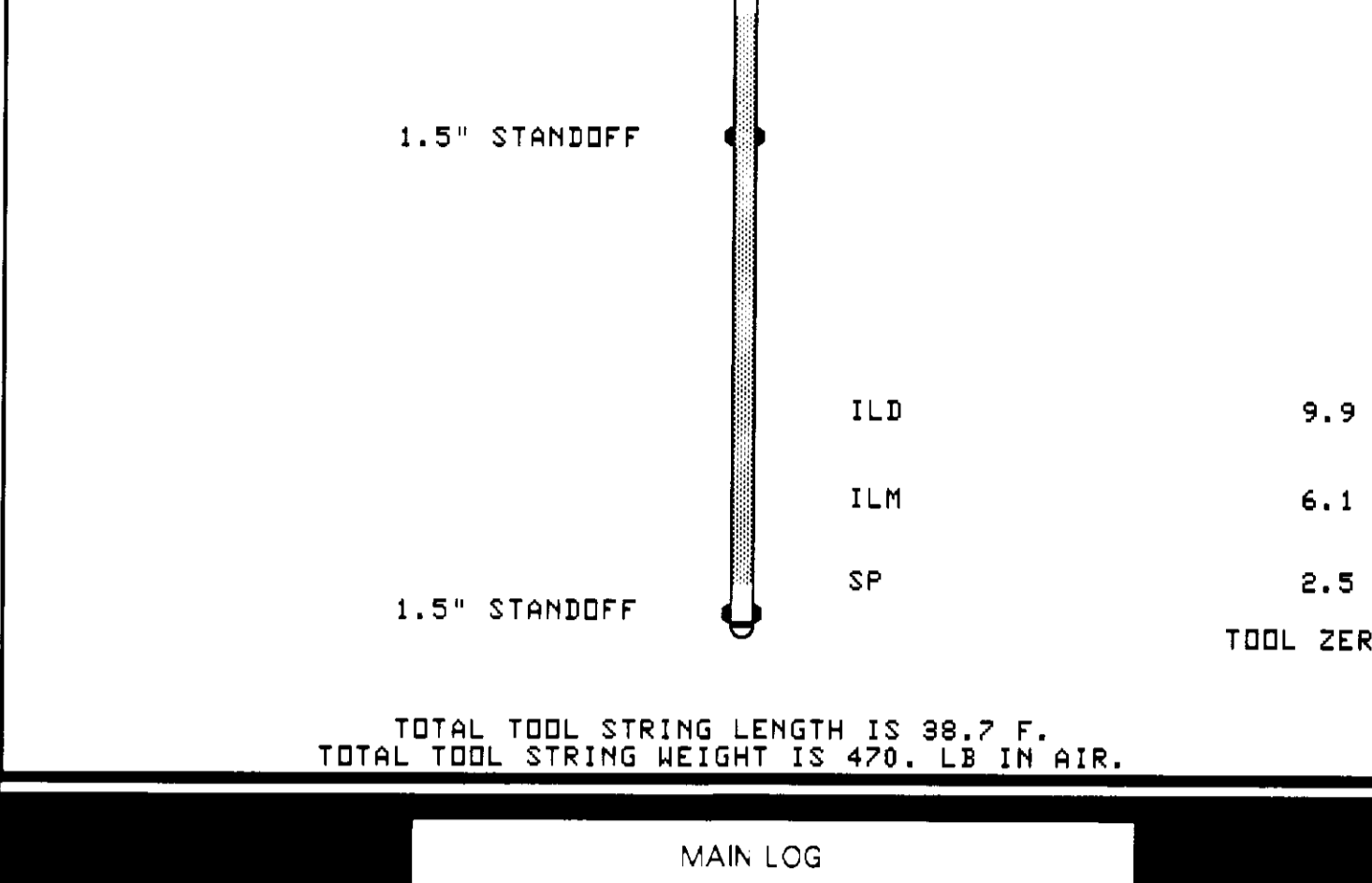


COUNTY COLUMBIA FIELD MIST LOCATION 1233'S & 1214'E COMPANY NAHAMA & WEAGANT ENERGY CO. COMPANY NAHAMA & WEAGANT ENERGY CO. WELL "COMPY" JOHNSTON #22B-19-65 COUNTY COLUMBIA STATE OREGON		LOCATION 823'S & 124'E API SERIAL NO. 36-009 00306 PERMITS 19 DATE 19 JUL 1993 DRILLING MEASURED FROM KI LOG MEASURED FROM KI ELEV. K: 8470.0 F D.F. 8480.0 F G.L. 8370.0 F	
Run No. 01 Depth Driver 2940.0 F Depth Logger (SCAN) 2940.0 F Btm. Log Interval 2934.0 F Top Log Interval 506.0 F Casing-Logger 506.0 F Bit Size 7 7/8" # 2940.0 F		Run No. 01 Depth Driver 2940.0 F Depth Logger (SCAN) 2940.0 F Btm. Log Interval 2934.0 F Top Log Interval 506.0 F Casing-Logger 506.0 F Bit Size 7 7/8" # 2940.0 F	
Types Fluid in Hole GEL INCLINAR H Dens. 9.240 11/16 Visc. 9.240 11/16 PH 7.0 Source of Sample HLOWINE Run @ Meas. Temp. 2340 OHMM @ 78.0 JKCF Run @ Meas. Temp. 2780 OHMM @ 77.0 JKCF Run @ Meas. Temp. 2740 OHMM @ 77.0 JKCF Source: Ann. Frac. M/SUBM Run @ BHT 2094 OHMM @ 88.0 JKCF Calc. on Bottom 2276 19 JUL 83 Max. Rec. Temp. 88.0 JKCF Equip. Location 82/1 Recorded By FLOWNE 11/01/93 Witnessed By RUCAS/AUGANAN/RINOTTI		Types Fluid in Hole GEL INCLINAR H Dens. 9.240 11/16 Visc. 9.240 11/16 PH 7.0 Source of Sample HLOWINE Run @ Meas. Temp. 2340 OHMM @ 78.0 JKCF Run @ Meas. Temp. 2780 OHMM @ 77.0 JKCF Run @ Meas. Temp. 2740 OHMM @ 77.0 JKCF Source: Ann. Frac. M/SUBM Run @ BHT 2094 OHMM @ 88.0 JKCF Calc. on Bottom 2276 19 JUL 83 Max. Rec. Temp. 88.0 JKCF Equip. Location 82/1 Recorded By FLOWNE 11/01/93 Witnessed By RUCAS/AUGANAN/RINOTTI	

The well name, location and borehole reference data were furnished by the customer.

All interpretations are opinions based on inferences from electrical or other measurements and we cannot, and do not, guarantee the accuracy or correctness of any interpretations, and we shall not, except in the case of gross or willful negligence or our part, be liable or responsible for any loss, costs, damages or expenses incurred or sustained by anyone resulting from any interpretations made by any of our officers, agents or employees. These interpretations are also subject to Clause 4 of our General Terms and Conditions as set out in our current Price Schedule.

Run No.	ONE
Service Order No.	624487
Drilling Fluid Level	
Salinity	800.0 PPM
Rmt @ BHT	2287 CH-MM @ 88.0 DEG
Rmo @ BHT	1786 CH-MM @ 88.0 DEG
Logging Speed	3800.0 F/H
EQUIPMENT DATA	
Tool Number 1	DIS-EC 422
Tool Number 2	DIC-DA 448
Tool Number 3	MCD-DA 688
Tool Number 4	
Tool Number 5	
Tool Number 6	IEM-BD 685
Tool Number 7	
Tool Number 8	
Tool Number 9	
Tool Number 10	
Tool Number 11	
Tool Number 12	
REMARKS:	
TWO 16" STANDOFFS RUN ON INDUCTION TOOL HOLE KICKED OFF AT 2400 FT. MAXIMUM DEVIATION 49 DEG AT TD.	

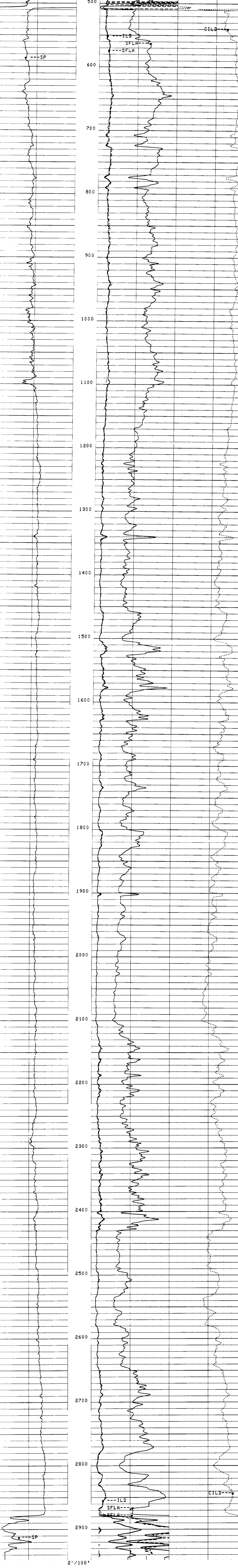


TOTAL TOOL STRING LENGTH IS 38.7 F.
TOTAL TOOL STRING HEIGHT IS 470. LB IN AIR.

MAIN LOG

ACCUMULATED INTEGRATION VALUES SUMMARY:
 Integrated Hole Volume: 770.340 F3 FROM 2940.00 F TO 506.000 F
 Integrated Cement Volume: 501.513 F3 FROM 2940.00 F TO 506.000 F
 (ASSUMING 4.50000 IN O.D. CASING)

CC	ILD(OHMM)	30.000	
CC	SFLA(OHMM)	8.0000	
CC	SFLA(OHMM)	30.000	1000.0
CC	CILD(M/M)		0.0



CC	ILD(OHMM)	30.000	
CC	SFLA(OHMM)	8.0000	
CC	SFLA(OHMM)	30.000	1000.0
CC	CILD(M/M)		0.0

SENSOR MEASURE POINT TO TOOL ZERO
 DITD 9.9 FEET MCDB 31.9 FEET
 DTT 2.5 FEET

PARAMETER	VALUE	UNIT
MSEC - Medium Sonde Error Correction	7.50000	MM/M
SBR - Shoulder Bed Resistivity	1.00000	OHMM
DSEC - Deep Sonde Error Correction	4.40000	MM/M
FCD - Future Casing Diameter	4.50000	IN
BS - Bit Size	7.87500	IN
BHS - BoreHole Status (Open or Cased)	OPEN	

COMPANY	NAHAMA & WEAGANT ENERGY CO.	8CHL. FR	2934.0 F
WELL	"COMPY" JOHNSTON #22B-19-65	SCHL. TD	2940.0 F
FIELD	MIST	DRLR. TD	2940.0 F
COUNTY	COLUMBIA	Elev:	KB 8470 F
STATE	OREGON	DF	8480 F
		GL	8370 F