



DUAL INDUCTION  
COMPENSATED SONIC

2"=100'

COMPANY ENERGIN RESOURCES N  
WELL CC #32-27-65  
FIELD MIST  
COUNTY COLUMBIA STATE OR  
WELL CC #32-27-65  
FIELD MIST  
COUNTY COLUMBIA STATE OR  
LOC. NO. 2399.89 FEET WEST AND  
1891.70 FEET SOUTH FROM  
THE NORTHEAST CORNER OF:  
STATE OR  
OTHER SERVICES:  
NONE

PREPARED BY: G.L. SECT 27 TWP 6N RGE 5W  
LOG MEASURED FROM K.B. 10.0 FT ABOVE PERM DRUM  
DATE 09/19/96  
DEPTH-DRILLER 2084  
CASING-DRILLER 2084  
CASING-LOGGER 7.000 495  
BIT SIZE 6.250  
TYPE FLUID IN HOLE BRIS /MRYV  
DENS. : VISC. :  
PH : FLUID LOSS :  
SOURCE OF SAMPLE :  
RM @ MEAS TEMP :  
RMC @ MEAS TEMP :  
SOURCE RM:RMC :  
RM @ BHT :  
RMC @ BHT :  
TIME SINCE CIRC. :  
TIME ON BOTTOM :  
MAX. REC TEMP :  
EQUIP. LOCATION :  
RECORDED BY :  
WITNESSED BY :

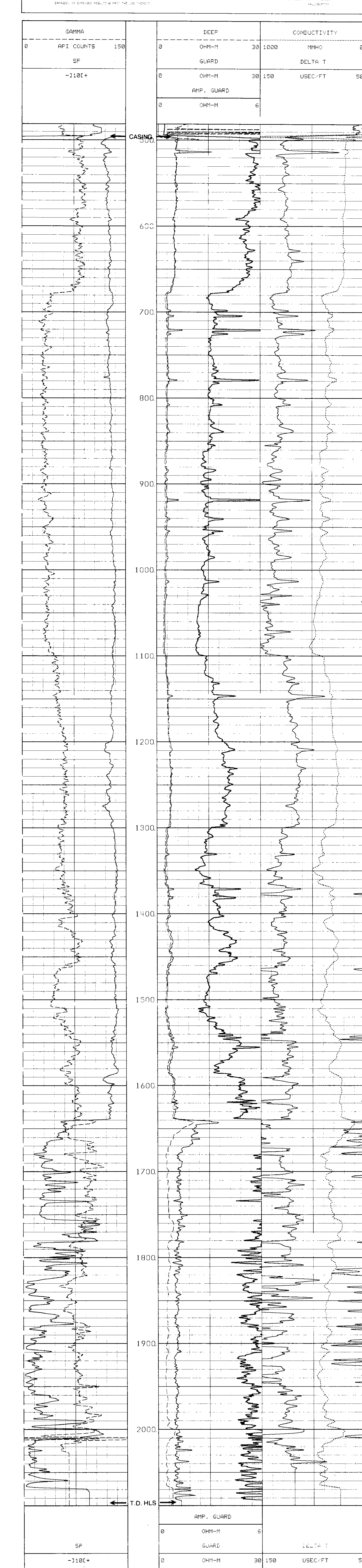
RESISTIVITY EQUIPMENT DATA  
RUN NO. TOOL TYPE & NO. PAD TYPE TOOL POS. OTHER  
ONE DILT #109432 N.A. 1.5"50  
ONE DSGT #108932 N.A. 1.5"50

EQUIPMENT DATA  
GAMMA ACUSTIC DENSITY NEUTRON  
RUN NO. ONE SERIAL NO. 109581  
MODEL NO. NGRT  
DIAMETER 3.625  
DETECTOR MODEL NO. N.A.  
TYPE SCINT.  
LENGTH 4.000  
DISTANCE TO SOURCE N.A.

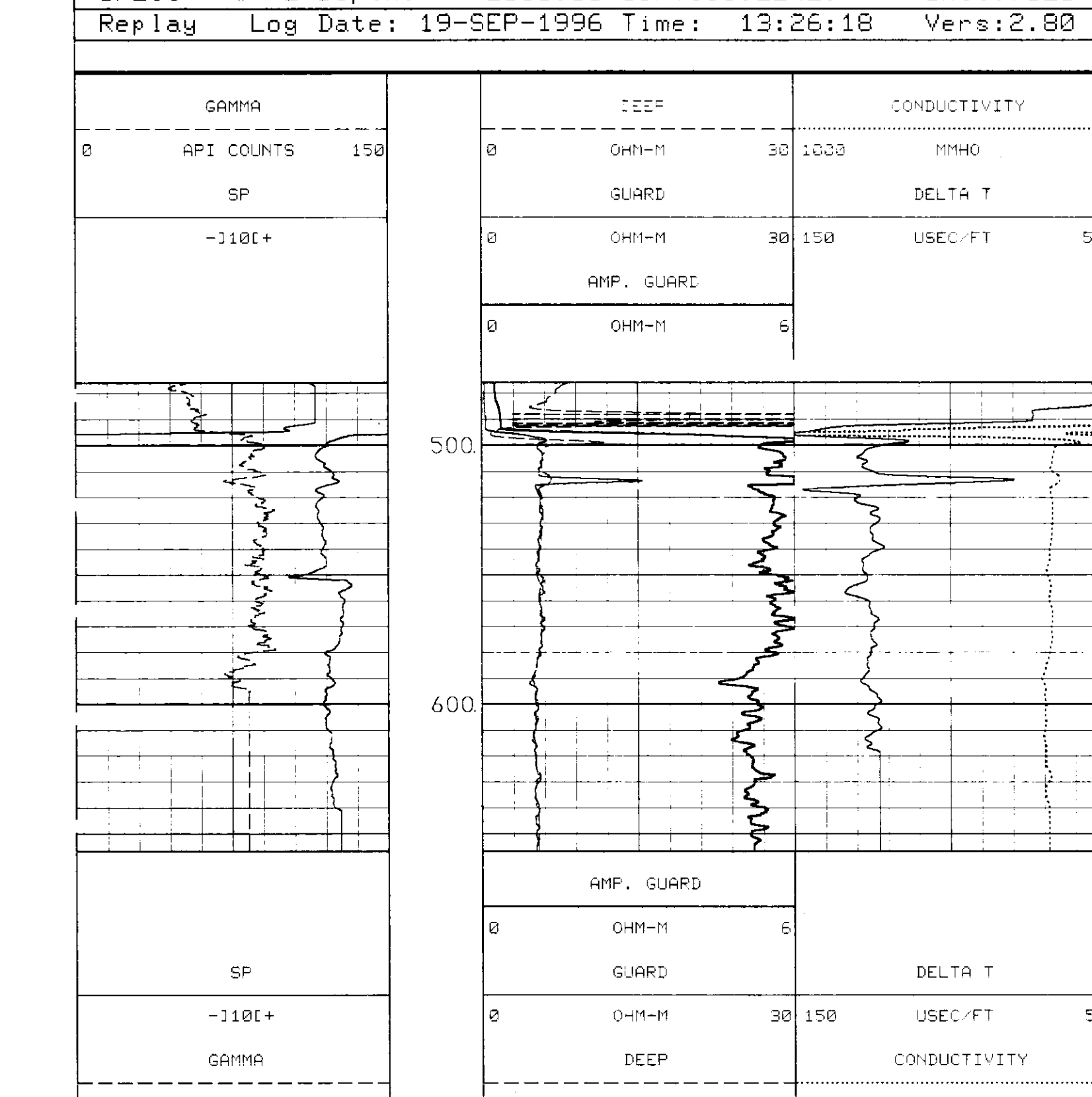
LOGGING DATA  
GENERAL SPEED FT/MIN 20  
GAMMA SCALE L R 0 150  
ACOUSTIC SCALE L R 150 50  
DENSITY SCALE L R MATRIX 57  
NEUTRON SCALE L R MATRIX

REMARKS: ANNULAR HOLE VOLUME CALCULATED USING 3.5" CASING.  
CREW ON LOCATION: M.BOLLINGER, D.BRIGHT RIG: TAYLOR #7  
THANK YOU FOR USING HALLIBURTON.

HALLIBURTON DOES NOT WARRANT THE ACCURACY OR THE REPRESENTATION OF THE LOG DATA. THE USER OF LOG DATA TO MAKE LOGS, MAKE UP LOGS, OR REPRODUCE LOGS IN ANY MANNER IS SOLELY RESPONSIBLE FOR THE USE OF LOG DATA. THE USER OF LOG DATA TO MAKE LOGS, MAKE UP LOGS, OR REPRODUCE LOGS IN ANY MANNER IS SOLELY RESPONSIBLE FOR THE USE OF LOG DATA. THE USER OF LOG DATA TO MAKE LOGS, MAKE UP LOGS, OR REPRODUCE LOGS IN ANY MANNER IS SOLELY RESPONSIBLE FOR THE USE OF LOG DATA.



UPLUG # 2 Depth: 2088.00 Service:2242. Unit:7626  
Replay Log Date: 19-SEP-1996 Time: 13:26:18 Vers:2.80



UPLUG # 1 Depth: 656.00 Service:2242. Unit:7626  
Replay Log Date: 19-SEP-1996 Time: 13:10:13 Vers:2.80