

02-41-02-105



**INDUCTION VELOCITY LOG**

2"-100'

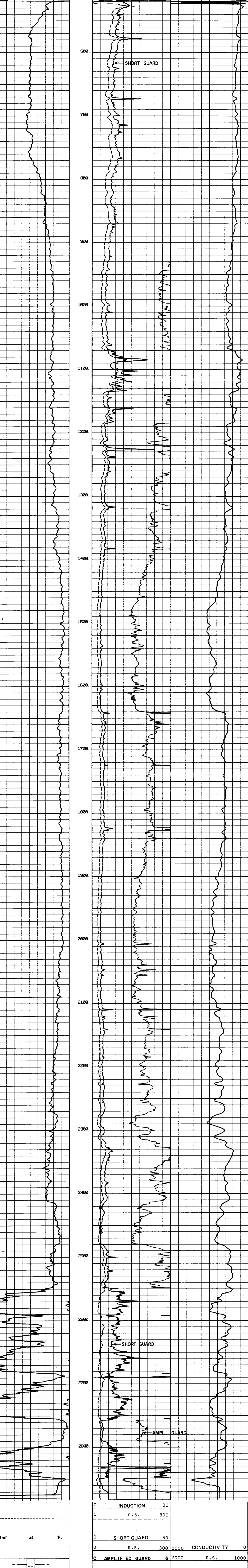
COMPANY REICHHOLD ENERGY CORPORATION  
 WELL COLUMBIA COUNTY 41-2 REICHHOLDPT1  
 FIELD MIST  
 COUNTY COLUMBIA STATE OREGON  
 Location 1218-28' SOUTH AND 481-87' DIAP WEST OF THE NORTHEAST CORNER OF 1 (N.D.B. & M.)  
 Sec. 2 Twp. 6N Rge. 5W  
 Permament Datum K.B. 1182.48 Elev. KB 1193.88  
 Log Measured From K.B. 1182.48 Elev. D. 1192.48  
 Drilling Measured From 7-7-82  
 Run No. ONE  
 Date 2875  
 Dip No. 2876  
 Depth-Welex 2872  
 Bm. Log Inter. 518 @ 518  
 Top Log Inter. 7 @ 518  
 Casing-Driller 518 @ 518  
 Casing-Welex 518 @ 518  
 Bit Size 6 1/4  
 Type Fluid in Hole GEL LCM

Dens. 1 Visc. 8.8 1.65  
 pH 1 Fluid Loss 10.5 1.10 ml  
 Source of Sample CIRCULATED  
 R<sub>1</sub> @ Meas. Temp. 7.0 @ 42 F  
 R<sub>2</sub> @ Meas. Temp. 7.0 @ 42 F  
 R<sub>3</sub> @ Meas. Temp. 7.0 @ 42 F  
 Source R<sub>1</sub> R<sub>2</sub> R<sub>3</sub> NEA SURET  
 R<sub>1</sub> @ BHT 3.35 @ 113 F  
 R<sub>2</sub> @ BHT 3.35 @ 113 F  
 R<sub>3</sub> @ BHT 2.23 @ 113 F  
 Max. Pac. Temp. 113 F @ BHT  
 Equip. Location 2876 1 WOODLAND  
 Recorded By R. SWARTZ, R. WISHART  
 Witnessed By M. ALGER

Service Ticket No. 057029 Remarks:

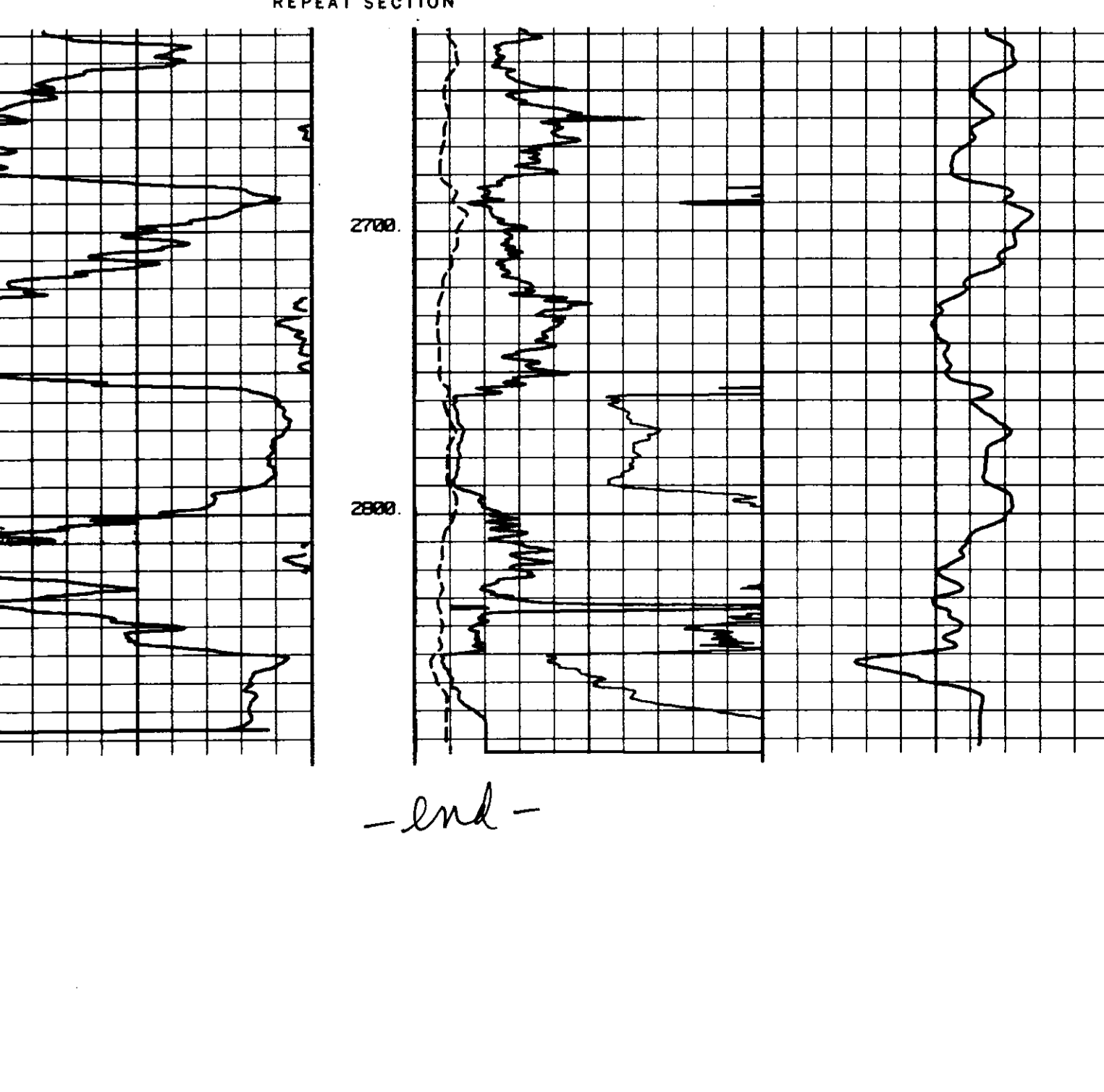
Change in Mud Type or Additional Samples		Type Log	Depth	SCALE CHANGES				
Date	Sample No.			Scale Up Hole	Scale Down Hole			
Type Fluid in Hole								
Dens.   Visc.								
ph   Fluid Loss								
Source of Sample								
R <sub>1</sub> @ Meas. Temp.		@	F	Run No.	Tool Type and No.	Pad Type	Tool Position	Other
R <sub>2</sub> @ Meas. Temp.		@	F	ONE	DIG 98862			CENTRALIZED
R <sub>3</sub> @ Meas. Temp.		@	F	ONE	AVL 29270			CENTRALIZED
Source: R <sub>1</sub>   R <sub>2</sub>   R <sub>3</sub>				ONE	CAL 29276			CENTRALIZED
R <sub>1</sub> @ BHT								
R <sub>2</sub> @ BHT								
R <sub>3</sub> @ BHT								
R.M.C.								

Welex does not guarantee the accuracy of any interpretation of log data, conversion of log data to physical rock parameters, or recommendations which may be given by Welex personnel or which may appear on the log or in any other form. Any user of such data, interpretations, conversions, or recommendations agrees that Welex is not responsible, except where due to gross negligence or willful misconduct, for any loss, damages, or expenses resulting from the use thereof.



REICHHOLD ENERGY CORPORATION  
 COLUMBIA COUNTY 41-2  
 MIST  
 COLUMBIA COUNTY, OREGON

T.D. LOGGED 2872  
 T.D. DRILLER 2875  
 T.D. WELEX 2876  
 ELEV. GL. 1182.48 KB. 1193.88



- end -