

Schlumberger

CSI

FDC/CML/GR 2-

COMPANY: REICHOLD ENERGY CORPORATION
 WELL: COLUMBIA COUNTY 943-27
 FIELD: MIST
 COUNTY: COLUMBIA
 STATE: OREGON
 LOCATION: FR. E 1/4 CR. S1 00'31" N
 477.87' N89 59'29" W 740.96
 SECT: 27 T1P1 6N
 DATE: 19 AUG 84
 RUN NO: 1
 DEPTH-DRILLER: 2441.0 F
 DEPTH-LOGGER: 2439.0 F
 BTM. LOG INTERVAL: 2438.0 F
 TOP LOG INTERVAL: 398.0 F
 CASING-DRILLER: 400 F
 CASING-LOGGER: 398 F
 CASING: 8.625
 BIT SIZE: 7.875
 DEPTH: 2441 F

OTHER SERVICES-
 BIL
 MLC
 MDT

API SERIAL NO:
 3600900127

PERMANENT DATUM: GL
 ELEV. OF PERM. DATUM: 898.5 F
 ELEVATIONS-
 ELEV. MEASURED FROM: K8
 DBI: 911.0 F
 DFI: 898.5 F
 DFLG. MEASURED FROM: K8

PROGRAM
 TAPR NO:
 26.2
 SERVICE
 ORDER NO:
 382952

TYPE FLUID IN HOLE: LIGNOSULFONATE
 DENSITY: 11.0 LB/G
 VISCOSITY: 53.0 S
 PH: 9.0
 FLUID LOSS: 4.6 C3
 SOURCE OF SAMPLE: CIRC.
 RMF: 1.350 DHMM AT 81.0 DEGF
 RMC: .860 DHMM AT
 SOURCE RMF/RMC: 2.000 DHMM AT 72.0 DEGF
 MEAS. /MEAS.
 RM AT BHT: 1.176 DHMM AT 94.0 DEGF
 RMC AT BHT: .059 DHMM AT 94.0 DEGF
 1.564 DHMM AT 94.0 DEGF
 TIME CIRC. STOPPED: 0230
 TIME LOGGER ON BTM.: 0907
 MAX. REC. TEMP: 94.0 DEGF
 LOGGING UNIT NO: 8128
 LOGGING UNIT LOC: SACRAMENTO
 RECORDED BY: ANDERSEN
 WITNESSED BY: ALGER

REMARKS:
 EQUIPMENT NUMBERS-
 NLM 436 SGC 3485 CNC 1132 PGS 542
 PDH 264

ALL INTERPRETATIONS ARE OPINIONS BASED ON INFERENCES FROM ELECTRICAL OR OTHER MEASUREMENTS AND WE CANNOT, AND DO NOT GUARANTEE THE ACCURACY OR CORRECTNESS OF ANY INTERPRETATIONS, AND WE SHALL NOT, EXCEPT IN THE CASE OF GROSS OR WILLFUL NEGLIGENCE ON OUR PART, BE LIABLE OR RESPONSIBLE FOR ANY LOSS, COSTS, DAMAGES OR EXPENSES INCURRED OR SUSTAINED BY ANYONE RESULTING FROM ANY INTERPRETATIONS MADE BY ANY OF OUR OFFICERS, AGENTS OR EMPLOYEES. THESE INTERPRETATIONS ARE ALSO SUBJECT TO OUR GENERAL TERMS AND CONDITIONS AS SET OUT IN OUR CURRENT PRICE SCHEDULE.

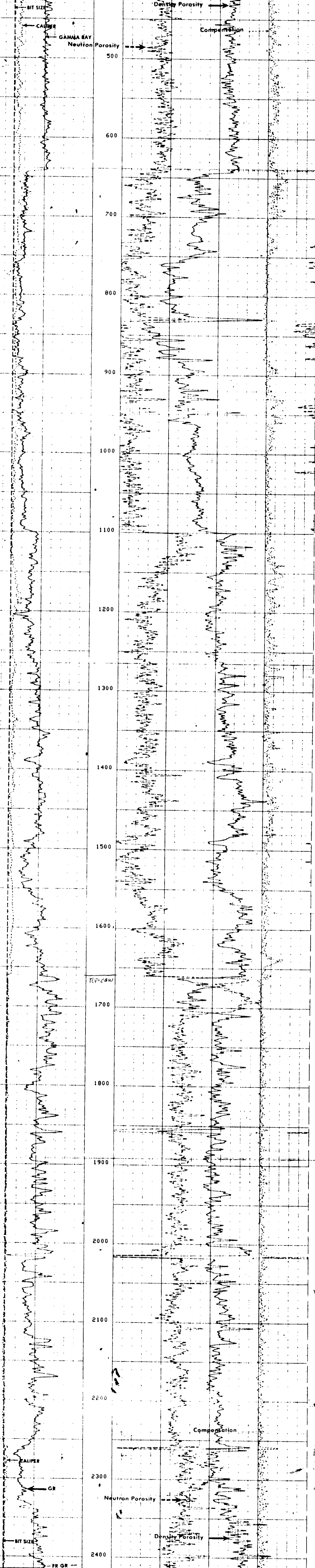
FILE 102 19-AUG-84 10:140
 DATA ACQUIRED 19-AUG-84 09:19

CHANGED PARAMETERS

NAME	VALUE	UNIT	DEPTH (F)	NAME	VALUE	UNIT	DEPTH (F)
DD	2.00000	F	2100.0				

BS (IN)	6.0000	16.0000	DRHO(G/C3)	.2500	.25000
CALI(IN)	6.0000	16.0000	DPHI		0.0
GR (GAPI)	0.0	150.00	NPFI		0.0

FILE 102 19-AUG-84 10:30
 DATA ACQUIRED 19-AUG-84 10:20



FILE 102 19-AUG-84 10:26
 DATA ACQUIRED 19-AUG-84 09:07

BS (IN)	6.0000	16.0000	DRHO(G/C3)	.2500	.25000
CALI(IN)	6.0000	16.0000	DPHI		0.0
GR (GAPI)	0.0	150.00	NPFI		0.0

SENSOR MEASURE POINT TO TOOL ZERO

NCNL 18.0 FEET	GR 26.5 FEET
FFDC 2.7 FEET	FCNL 19.0 FEET
CALI 2.7 FEET	NFDC 2.7 FEET
MRAT 18.0 FEET	TENS -2 FEET

PARAMETERS

NAME	VALUE	UNIT	NAME	VALUE	UNIT
HC CALI	1.00000	G/C3	PSNR	2.32600	
FD	1.00000		MATR SAND		
FDCC ALLO			MATR	2.65000	G/C3
BHS OPEN			BHF HATE		
DD	1.00000	F	BC	7.87500	IN
PP					