

013-34-05



RECEIVED - RFD
MAY 15 1985
SAC, SACRAMENTO

LT-CAL-GR-5*

COMPANY: BECHTEL ENERGY CORPORATION
WELL: COLUMBIA COUNTY 43-34
FIELD: MIST
STATE: OREGON
LOCATION: 216 N & 109 W P.E. SE COR.
SEC: 34
ELEVATIONS: MSL 819.1 F
MHI 807.6 F
MFI 807.6 F
DIP: 11.5 F
DRUG: MEASURED FMDI
PENNEANT DRUM: 80.6 F
LEG. DR. FROM: 80.6 F
LEG. TO: 80.6 F
RANGE FROM: 80.6 F
RANGE TO: 80.6 F
DATE: 18 MAR 85
RWD: 18 MAR 85

DEPTH-DRILLER: 2100.0 F
METH. LOGGER: 800.0 F
TYP. LOG INTERVAL: 1000.0 F
CASING-LOGGER: 431 F
CASING: 8 5/8"
BIT SIZE: 7 7/8"
BIT DEPTH: 2100 F

OTHER SERVICES:
BHC
HIT

PROGRAM
TYPE NO:
SEC NO:
DRDR NO:
432410

TYPE FLUID IN HOLE: LIGHTSULFONATE
DENSITY: 10.4 LB/G
VISCOSITY: 50.0 CS
PH: 9.5
FLUID LOSS: 5.4 C
SOURCE OF SAMPLE: FLDLINE
RWL: 2.00 DHMM AT 57.0 DEGF
RMF: 1.60 DHMM AT 49.0 DEGF
RMC: 5.76 DHMM AT 92.0 DEGF
SOURCE RMF/RMC: MEASURED/MEASURED
RMF AT BHT: 1.31 DHMM AT 92.0 DEGF
RMC AT BHT: 1.90 DHMM AT 92.0 DEGF
RMF AT BHT: 3.316 DHMM AT 92.0 DEGF

TIME CIRC. STOPPED: 13100 3/18
TIME LOGGER ON BTM: 21145 3/18

MAX. REC. TEMP: 92.0 DEGF

LOGGING UNIT NO: 8128
LOGGING LOC: SACRAMENTO
RECORDED BY: HAYER
WITNESSED BY: ALGER/THOMAS

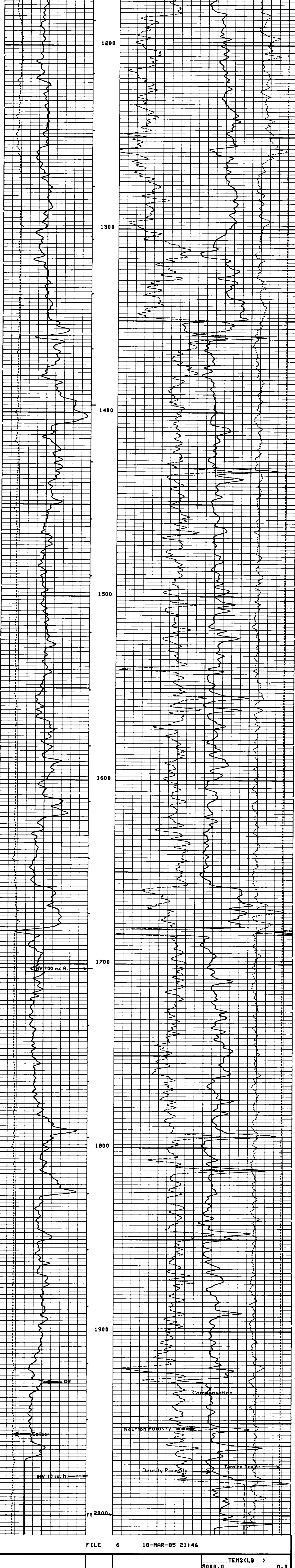
REMARKS:
CHLORIDES: 706PPM

EQUIPMENT NUMBERS:
DRS 4775 NSC 1955 CNC 24 SGC 561
CCC B 2880 CIN 270

ALL INTERPRETATIONS ARE OPINIONS BASED ON INFERENCES BASED ON MEASUREMENTS AND DO NOT GUARANTEE THE ACCURACY OR CORRECTNESS OF ANY INTERPRETATIONS, AND WE SHALL NOT, EXCEPT IN THE CASE OF GROSS OR WILLFUL NEGLIGENCE ON OUR PART, BE LIABLE OR RESPONSIBLE FOR ANY LOSS, COSTS, DAMAGES OR EXPENSES INCURRED OR SUSTAINED BY ANYONE RESULTING FROM ANY INTERPRETATION MADE BY ANY OF OUR OFFICERS, AGENTS OR EMPLOYEES. THESE INTERPRETATIONS ARE ALSO SUBJECT TO OUR GENERAL TERMS AND CONDITIONS AS SET OUT IN OUR CURRENT PRICE SCHEDULE.

FILE 3 18-MAR-85 20124
DATA ACQUIRED 00--00 00100

6.0000 CALI(IN) 16.0000	6.0000	5000.0 TENS(LB) 0.0
0.0 GR (GAPI) 150.00	6.0000	.2500 DRHD(G/C3) .25000
		DPHI 0.0
		NPHI 0.0



6.0000 CALI(IN) 16.0000	6.0000	5000.0 TENS(LB) 0.0
0.0 GR (GAPI) 150.00	6.0000	.2500 DRHD(G/C3) .25000
		DPHI 0.0
		NPHI 0.0

SENSOR MEASURE POINT TO TOOL ZERO

STSG 32.5 FEET	GR 37.0 FEET
NECN 24.2 FEET	NTCH 25.7 FEET
FECN 23.7 FEET	FTCN 26.2 FEET
SS1 2.0 FEET	SS2 2.0 FEET
LS 2.5 FEET	LITH 2.5 FEET
LL 2.5 FEET	LI 2.5 FEET
TENS 9 FEET	CALI 2.6 FEET
ENRA 23.5 FEET	TNRA 26.5 FEET

PARAMETERS

NAME	VALUE	UNIT	NAME	VALUE	UNIT
BHT	91.0000	DEGF	TD	2098.00	F
MFT	49.0000	DEGF	SHT	45.0000	DEGF
MH	10.4000	LB	RMS	1.68000	DHMM
ENPS	ENRY		NSSN	0	
TNPS	NDRM		PDIF	TNEN	
MATR	SAND		HC CALI		
MEN	2.65000	G/C3	FD	1.00000	G/C3
LPCS	TWIN		MUUD	10.4000	LB/G
BHS	DPEN		DHC CALI		
BS	7.87500	IN			

6.0000 CALI(IN) 16.0000	6.0000	5000.0 TENS(LB) 0.0
0.0 GR (GAPI) 150.00	6.0000	.2500 DRHD(G/C3) .25000
		DPHI 0.0
		NPHI 0.0

REPEAT SECTION

FILE 5 18-MAR-85 21145

6.0000 CALI(IN) 16.0000	6.0000	5000.0 TENS(LB) 0.0
0.0 GR (GAPI) 150.00	6.0000	.2500 DRHD(G/C3) .25000
		DPHI 0.0
		NPHI 0.0

SENSOR MEASURE POINT TO TOOL ZERO

STSG 32.5 FEET	GR 37.0 FEET
NECN 24.2 FEET	NTCH 25.7 FEET
FECN 23.7 FEET	FTCN 26.2 FEET
SS1 2.0 FEET	SS2 2.0 FEET
LS 2.5 FEET	LITH 2.5 FEET
LL 2.5 FEET	LI 2.5 FEET
TENS 9 FEET	CALI 2.6 FEET
ENRA 23.5 FEET	TNRA 26.5 FEET

PARAMETERS

NAME	VALUE	UNIT	NAME	VALUE	UNIT
BHT	91.0000	DEGF	TD	2098.00	F
MFT	49.0000	DEGF	SHT	45.0000	DEGF
MH	10.4000	LB	RMS	1.68000	DHMM
ENPS	ENRY		NSSN	0	
TNPS	NDRM		PDIF	TNEN	
MATR	SAND		HC CALI		
MEN	2.65000	G/C3	FD	1.00000	G/C3
LPCS	TWIN		MUUD	10.4000	LB/G
BHS	DPEN		DHC CALI		
BS	7.87500	IN			

6.0000 CALI(IN) 16.0000	6.0000	5000.0 TENS(LB) 0.0
0.0 GR (GAPI) 150.00	6.0000	.2500 DRHD(G/C3) .25000
		DPHI 0.0
		NPHI 0.0

FILE 4 18-MAR-85 21115

6.0000 CALI(IN) 16.0000	6.0000	5000.0 TENS(LB) 0.0
0.0 GR (GAPI) 150.00	6.0000	.2500 DRHD(G/C3) .25000
		DPHI 0.0
		NPHI 0.0

SENSOR MEASURE POINT TO TOOL ZERO

STSG 32.5 FEET	GR 37.0 FEET
NECN 24.2 FEET	NTCH 25.7 FEET
FECN 23.7 FEET	FTCN 26.2 FEET
SS1 2.0 FEET	SS2 2.0 FEET
LS 2.5 FEET	LITH 2.5 FEET
LL 2.5 FEET	LI 2.5 FEET
TENS 9 FEET	CALI 2.6 FEET
ENRA 23.5 FEET	TNRA 26.5 FEET

PARAMETERS

NAME	VALUE	UNIT	NAME	VALUE	UNIT
BHT	91.0000	DEGF	TD	2098.00	F
MFT	49.0000	DEGF	SHT	45.0000	DEGF
MH	10.4000	LB	RMS	1.68000	DHMM
ENPS	ENRY		NSSN	0	
TNPS	NDRM		PDIF	TNEN	
MATR	SAND		HC CALI		
MEN	2.65000	G/C3	FD	1.00000	G/C3
LPCS	TWIN		MUUD	10.4000	LB/G
BHS	DPEN		DHC CALI		
BS	7.87500	IN			

6.0000 CALI(IN) 16.0000	6.0000	5000.0 TENS(LB) 0.0
0.0 GR (GAPI) 150.00	6.0000	.2500 DRHD(G/C3) .25000
		DPHI 0.0
		NPHI 0.0

BEFORE SURVEY CALIBRATION SUMMARY

PERFORMED: 85/03/18
PROGRAM FILE: LEG (VERSION 25.802 83/12/14)

SGTL DETECTOR CALIBRATION SUMMARY

MEASURED	JIG	CALIBRATED	UNITS
GR	35	193	GAPI

CMTG CALIBRATION SUMMARY

TANK	MEASURED	CALIBRATED	JIG	MEASURED	CALIBRATED
TNRA	2.232	2.158	2.175	2.103	2.103

LDTG DETECTOR CALIBRATION SUMMARY

DRS SONDE NUMBER	NUCLEAR SERVICE CARTRIDGE NUMBER	POWERED DETECTOR HOUSING NUMBER	POWERED GAMMA-GAMMA DETECTOR NUMBER	LDT LOGGING SOURCE NUMBER	LDT CALIBRATION MODE	MUD DENSITY
4775	1955	2942	2710	7137	HATE	10.4000

MEASURED

AL	UNITS
LL	98.5 CPS
LU	150.5 CPS
LS	173.7 CPS
LTH	51.0 CPS
SS1	197.2 CPS
SS2	283.7 CPS

LDTG CALIBRATION SUMMARY

CALI	MEASURED	LARGE	SMALL	CALIBRATED	LARGE	SMALL	UNITS
	6.6	11.0	8.0	12.0	12.0	8.0	IN

FILE 3 18-MAR-85 20151

AFTER SURVEY TOOL CHECK SUMMARY

PERFORMED: 85/03/18
PROGRAM FILE: LEG (VERSION 25.802 83/12/14)

CMTG TOOL CHECK

BEFORE	JIG	AFTER POROSITY+CHANGE (LINE)
TNRA	2.103	2.122 .002

LDTG TOOL CHECK

DRS SONDE NUMBER	NUCLEAR SERVICE CARTRIDGE NUMBER	POWERED DETECTOR HOUSING NUMBER	POWERED GAMMA-GAMMA DETECTOR NUMBER	LDT LOGGING SOURCE NUMBER	LDT CALIBRATION MODE	MUD DENSITY
4775	1955	2942	2710	7137	HATE	10.4000

BACKGROUND MEASURED

BEFORE	AFTER	UNITS
LL	98.5	CPS
LU	150.5	CPS
LS	173.7	CPS
LTH	51.0	CPS
SS1	197.2	CPS
SS2	283.7	CPS

FILE 8 18-MAR-85 22157

VERSION 86.2 83/11/17

LDTG DETECTOR CALIBRATION SUMMARY

DRS SONDE NUMBER	NUCLEAR SERVICE CARTRIDGE NUMBER	POWERED DETECTOR HOUSING NUMBER	POWERED GAMMA-GAMMA DETECTOR NUMBER	LDT LOGGING SOURCE NUMBER	LDT CALIBRATION MODE	MUD DENSITY
4775	1955	2942	2710	7137	HATE	10.4000

MASTER CALIBRATED

AL	UNITS
LL	98.5 CPS
LU	150.5 CPS
LS	173.7 CPS
LTH	51.0 CPS
SS1	197.2 CPS
SS2	283.7 CPS

SHIP SUMMARY

PERFORMED: 05-MAR-85 13150
PROGRAM FILE: C5HDP (VERSION 28.15 85/01/03)

CMTG CALIBRATION SUMMARY

CNH (CMTG HOUSING #)	CNC (CMTG CARTRIDGE #)	CNB-AB (CMT JIG #)	CNS (NEUTRON SOURCE) SERIAL #
34	24	3200	3064

TANK

MEASURED	CALIBRATED	JIG	MEASURED	CALIBRATED
TNRA	2.232	2.158	2.189	2.116