

WELL LOGGING, INC.

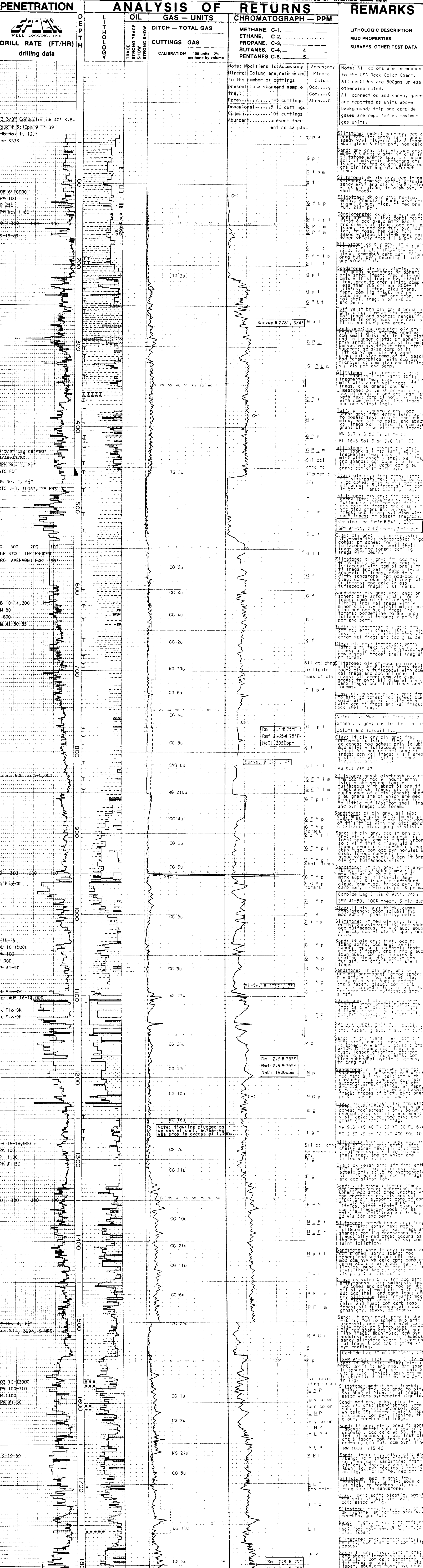
COMPANY ARCO OIL & GAS CO.
WELL CeR LUNDGREN CREEK 24-18-64
FIELD MIST
LOCATION 1135.70'N & 2181.19'E from the SW corner of Sec. 18, T6N, R4W, N48S.
COUNTY, STATE Columbia, Oregon
API WELL INDEX NO.
ELEVATION 636.1' GL, 647.5' KB
DATES FROM 9-14-89 TO 9-19-89
DEPTHS FROM 40' KB TO 1810'
SPUD DATE 9-14-89
DRILLING CONTRACTOR Taylor Drilling, Rig #5
MUD COMPANY Barold
LOGGING GEOLOGISTS Craig Anderson, Gary Sencsator

ABBREVIATIONS table with columns for abbreviations and full names (e.g., NB BIT, MW MUD WEIGHT, VIS FUNNEL VISCOSITY).

CASING RECORD table with columns for casing size and depth (e.g., 13 3/8" Cond. AT 30', 9 5/8" AT 460').

Legend for rock types: SAND/SANDSTONE, CLAY, LIMESTONE, TUFF, LIGNITE, SHALE, DIATOMITE, DOLOMITE, FOSSIL, GLAUCONITE, SILTSTONE, CONGLOMERATE, BASALT, MICA, PYRITE.

OIL: BASED ON LIVE OIL IN UNWASHED CUTTINGS AND PERCENT STAINING AND FLUORESCENCE OF WASHED SAMPLES.



TO DRILLERS DEPTH 1810'
Log summary and additional data at the bottom of the page.