

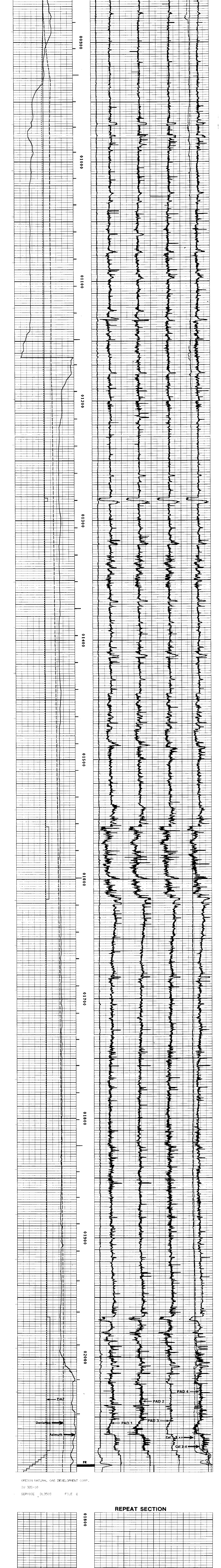
<b>ATLAS SERVICES</b>		<b>DIPLOG</b>	
Western Area 511 - 100		NORTHWEST NATURAL GAS OREGON NATURAL GAS DEVELOPMENT CORP.	
FILE NO. WELL FIELD COUNTY STATE OR	COMPANY OREGON NATURAL GAS DEVELOPMENT CORP. IN 22-10 MISTI OREGON	LOCATION FROM 51.1 N. 25.9 W. 5. H SECTION 12 T14P4N R1E35W	OTHER SERVICES BHC/RC/RC/CAL DTP/DC/DC RECORDING
FORMER WELL NO. WELL INC. NUMBER FROM DATE RUN SERVICE ORDER	2 11.4 12-15-50 53293	ELEV. 782.5 FT. ABOVE P.D. 11.4 12-15-50 53293	ELECTRICITY NO. 881.45 DE. 782.25
DEPTH - FEET BOTTOM LOGGED INTERVAL OR LOGGED INTERVAL	2982' 2982' 2982'	8.53' 8.53' 8	8 8 8

IN MAKING INTERPRETATIONS OF LOGS OUR EMPLOYEES HAVE CONSIDERED THE SINE WAVE INTERFERENCES THAT ARE COMMON TO ALL INTERFERENCES ARE GRINDING SINE WAVES. WE DO NOT BELIEVE THAT THESE INTERFERENCES ARE CAUSED BY THE RECORDING OR DEVELOPMENT OF NEW INTERFERENCES. WE DO NOT BELIEVE THAT THESE INTERFERENCES ARE CAUSED BY THE RECORDING OR DEVELOPMENT OF NEW INTERFERENCES. WE DO NOT BELIEVE THAT THESE INTERFERENCES ARE CAUSED BY THE RECORDING OR DEVELOPMENT OF NEW INTERFERENCES.

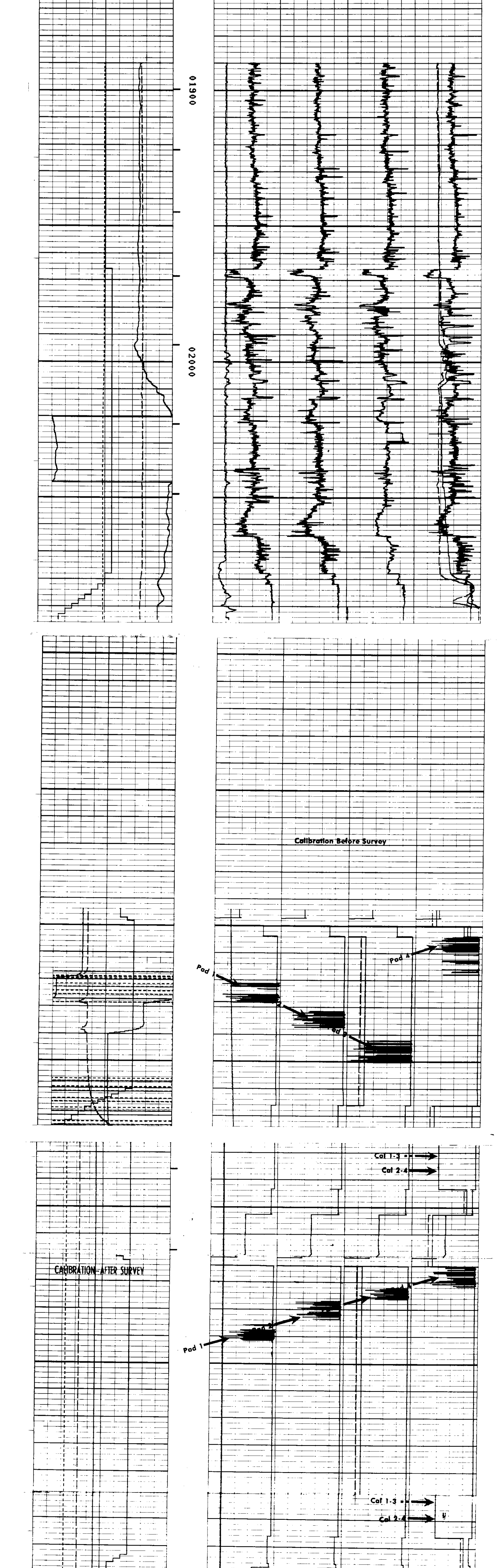
REMARKS RUN ( 1 )  
VOL COMPUTED FOR 8.625" CASING.

RUN	TRIP	TOOL	SERIAL NO.	SERIES NO.	POSITION
1	1	CO	7417B	2227XR	DE-CENT
1	1	CAL	7417B	2227XR	DE-CENT
1	1	CR	50234	3506XR	DE-CENT
1	1	CR	50234	3506XR	DE-CENT
1	1	TEMP	73029	3506XR	DE-CENT
1	1	DTP	78297/52432	12131/1010	DE-CENT

OREGON NATURAL GAS DEVELOPMENT CORP.  
IU 330-10  
SERVICE DL3505 FILE 7



OREGON NATURAL GAS DEVELOPMENT CORP.  
IU 330-10  
SERVICE DL3505 FILE 8



OREGON NATURAL GAS DEVELOPMENT CORP.  
IU 330-10  
SERVICE DL3505 FILE 9