

2" DUAL INDUCTION-SFL

WELL: STEELE ENERGY CORPORATION
"DORCHESTER" 91 (KEYS 91-28)

OTHER SERVICES:
HDI
API SERIAL NO: 36-089-008

COMPANY: STEELE ENERGY CORPORATION

WELL: "DORCHESTER" 91 (KEYS 91-28)

FIELD: WILDCAT
COUNTY: DIXON
STATE: MISSISSIPPI
NEEDLE: 400' 5" 500' 5"

Electric Log Header Information

Location: U.S.A.
Section: 28 Twp: 9S R6E: 2E
Location: 460' SW, 540' EW
Permanent Datum: 61
Elev. of Perm. Datum: 2790.0F KB: 2812.0F
Log Measured From: KB
22.0F Above Perm. Datum
D.L.C. Measured From: KB
61: 2790.0F

LOGGING UNIT NO: 8128
LOGGING UNIT LOC: SACRAMENTO
RECORDED BY: PILCH
WITNESSED BY: FISK/HORACE/SANDEFUR

TYPE FLUID IN HOLE: OMMIPOL/CYPAN
DENSITY: 10.0 LB/G
VISCOSITY: 70.0 S
PH: 9.0
FLUID LOSS: 7.0 C3
SOURCE OF SAMPLE: FLOWLINE
RH: 4.700 DHMM AT 50.0 DEGF
RHF: 6.670 DHMM AT 34.0 DEGF
RMC: 6.060 DHMM AT 34.0 DEGF
SOURCE RHF/RMC: MEASURED/MEASURED
RM AT BHT: 2.029 DHMM AT 125. DEGF
RHF AT BHT: 2.071 DHMM AT 125. DEGF
RMC AT BHT: 1.882 DHMM AT 125. DEGF

TIME CIRCG. STOPPED: 13:27 1-3
TIME LOGGER ON BTM: 17:36 1-3

MAX. REC. TEMP: 125.0 DEGF

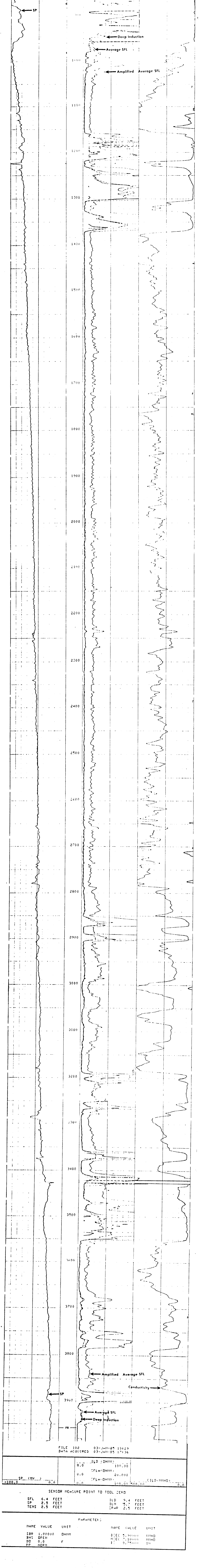
BIT SIZE: 8 3/4"
DEPTH: 3867'

REMARKS:
PULLED TIGHT IN ZONE AT 3400'. ERRONEOUS DATA THROUGH THE ZONE.

EQUIPMENT NUMBERS-
DIS-EA 691 DIC-DA 658 IEM-BD 304

ALL INTERPRETATIONS ARE OPINIONS BASED ON INFERENCES FROM ELECTRICAL OR OTHER MEASUREMENTS AND WE CANNOT, AND DO NOT GUARANTEE, THE ACCURACY OR CORRECTNESS OF ANY INTERPRETATIONS, AND WE SHALL NOT, EXCEPT IN THE CASE OF GROSS OR WILLFUL NEGLIGENCE ON OUR PART, BE LIABLE OR RESPONSIBLE FOR ANY LOSS, COSTS, DAMAGES OR EXPENSES INCURRED OR SUSTAINED BY ANYONE RESULTING FROM ANY INTERPRETATION MADE BY ANY OF OUR OFFICERS, AGENTS OR EMPLOYEES. THESE INTERPRETATIONS ARE ALSO SUBJECT TO OUR GENERAL TERMS AND CONDITIONS AS SET OUT IN OUR CURRENT PRICE SCHEDULE.

FILE 103 03-JAN-85 18:25
DATA ACQUIRED 03-JAN-85 18:07



FILE 102 03-JAN-85 15:29
DATA ACQUIRED 03-JAN-85 17:36

SENSOR MEASURE POINT TO TOOL ZERO
SFL 6.4 FEET
SP 2.5 FEET
TENS 2.5 FEET
ILD 9.4 FEET
ILM 5.7 FEET
FWR 2.5 FEET

NAME	VALUE	UNIT	NAME	VALUE	UNIT
SBR	1.00000	DHMM	DECC	5.00000	MMHO
BMS	0.00000	F	NECC	7.10000	MMHO
DO	0.0	F	EL	8.75000	IN
FP	0.00000	F			