

DUAL INDUCTION LATEROLOG COMPENSATED SONIC LOG

2" = 100'

COMPANY: NADSON & WAGNER ENERGY COMPANY
WELL: 44444444-CHICKEN-CRACKLE-722-31-65
FIELD: MISSI
COUNTY: COALBURNIA
STATE: MISSISSIPPI

Location: 1162.81' S&11TH & 1305.79' E
EAST OF THE NORTHWEST CORNER: 1113

Sec: 11 Twp: 6N Rge: 6W
Perm. Datum: 101' Elev: 501.917'
Dilling Measured From: KIS Ft. Above Perm. Datum: Elev. K.B: 511.917'
D.L.: 101.917'

Date: 8-31-91
Run No.: 001
Depth-Driller: 1991' MD
Btm Log-Logger: 1990' MD
Btm Log-Logger: 1989' MD
Top Log-Logger: 1977' MD

Table with columns for various well parameters including pH, Fluid Loss, Source of Sample, and Borehole Corrections.

Service Ticket No.: L68248 API Serial No.: PGM Version:
Change in Mud Type or Additional Samples: RESISTIVITY/RWA SCALE CHANGES COMPUTED FROM

Table with columns for Date, Sample No, Type Log, Depth, Scale Up Hole, Scale Down Hole, and COMPUTED FROM.

Table with columns for Run No., Tool Type and No., Pad Type, Tool Position, and Other.

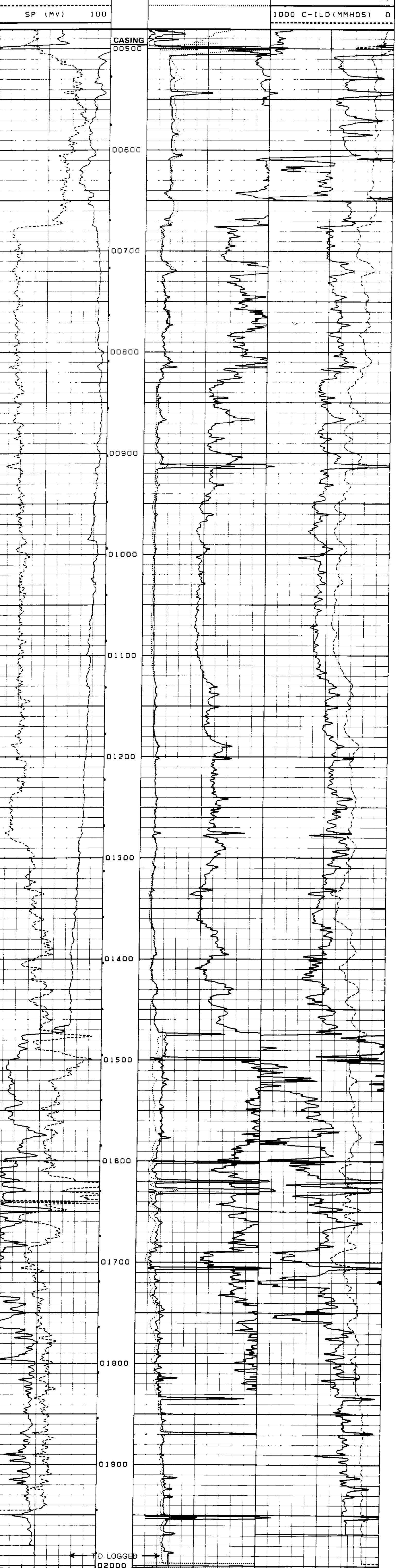
Table with columns for Run No., Serial No., Model No., Diameter, Detector Model No, Type, Length, and Distance to Source.

Table with columns for Run No., Scale, Matrix, and Matrix.

REMARKS: TAYLOR DRILLING
CASED HOLE PARAMETERS: From, To, Bit Size, Csg. O.D, Csg. Wt.

Halliburton Logging Services, Inc. does not guarantee the accuracy of any interpretation of log data...

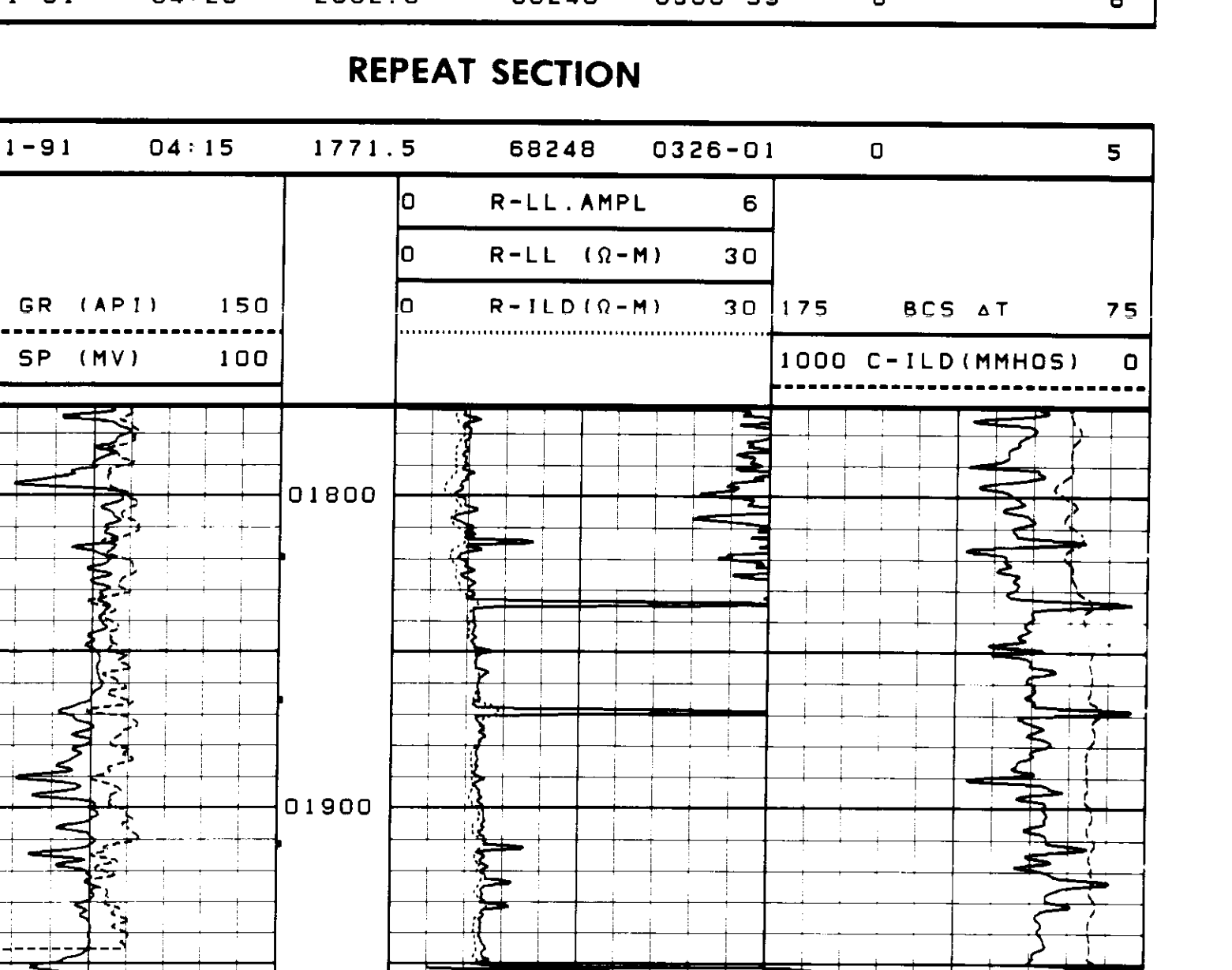
08-31-91 04:52 481.0 68248 0326-01 0 6



08-31-91 04:20 2002.0 68248 0308-99 0 6

REPEAT SECTION

08-31-91 04:15 1771.5 68248 0326-01 0 5



08-31-91 04:11 2002.0 68248 0308-99 0 5