

COMPANY: REICHOLD ENERGY CORPORATION
 WELL: LONGVIEW TIRE 423-36
 FIELD: NIST
 STATE: OREGON
 LOCATION: 2502.63 NORTH & 470.34 WEST
 SEC: 36 T1P: 6N RGE: 5N
 PERMANENT POINT: SE 0.0
 ELEVATIONS:
 EIG MEASURED FROM: KB
 DATUM: G1 588.0
 DIAL: TRANSFER FROM: KB
 OTHER SERVICES:
 FIC/CM/CR
 HIT
 PROGRAM
 TYPE NO:
 SERVICE
 ORDER NO:
 423186

DEPTH-BELLER: 1829.0
 DEPTH-LOGGER: 1826.0
 BHM LOG INTERVAL: 1824.0
 CASING-DRILLER: 341
 CASING-LOG INTERVAL: 8.28
 CASING: 8.28
 BIT SIZE: 7.875

TYPE FLUID IN HOLE: GEL/LIGND
 DENSITY: 11.3 LB/G
 VISCOSITY: 53.0 S
 PH: 8.5
 FLUID LOSS: 5.4 CS
 SOURCE OF SAMPLE: FLO/LHC
 RM: 2.010 DHMM AT 60.0 DEGF
 RMF: 2.300 DHMM AT 45.0 DEGF
 RMC: 2.190 DHMM AT 45.0 DEGF
 MEAS/MEAS: 1.094 DHMM AT 116. DEGF
 RM AT BHT: 1.094 DHMM AT 116. DEGF
 RMF AT BHT: 0.972 DHMM AT 116. DEGF
 RMC AT BHT: 1.223 DHMM AT 116. DEGF
 TIME CIRC. STOPPED: 15:00 12-10
 TIME LOGGER ON BHT: 19:33 12-10
 MAX. REC. TEMP: 116.0 DEGF
 LOGGING UNIT NO: 8178
 LOGGING UNIT LOC: SACRAMENTO
 RECORDED BY: SUTER
 WITNESSED BY: ALGER

REMARKS:

SALINITY: 600 PPM CL-CENTRALIZATION: RUBBER FINS AND CREZS

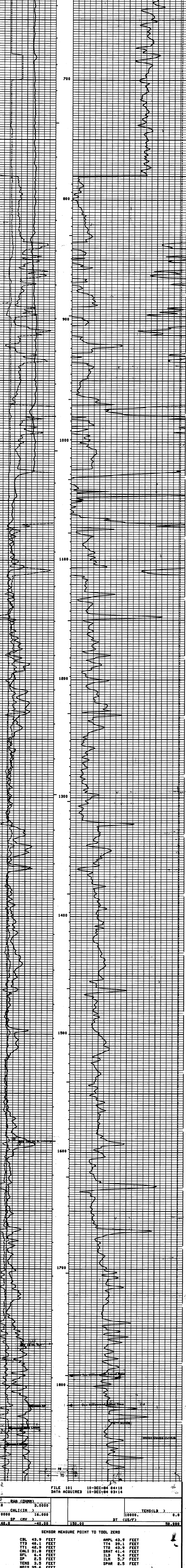
EQUIPMENT NUMBERS-

DIS 1422 DIC 1149 SLS 346 SLC 1589
MCD 1507 IEM 686 SLN 1281

ALL INTERPRETATIONS ARE OPINIONS BASED ON INFERENCE FROM ELECTRICAL OR OTHER MEASUREMENTS AND WE CANNOT AND DO NOT GUARANTEE THE ACCURACY OR CORRECTNESS OF ANY INTERPRETATIONS, AND WE SHALL NOT, EXCEPT IN THE CASE OF GROSS OR WILLFUL NEGLIGENCE ON OUR PART, BE LIABLE OR RESPONSIBLE FOR ANY LOSSES, COSTS, DAMAGES OR EXPENSES INCURRED OR SUSTAINED BY ANYONE RESULTING FROM ANY INTERPRETATION MADE BY ANY OF OUR OFFICERS, AGENTS OR EMPLOYEES. THESE INTERPRETATIONS ARE ALSO SUBJECT TO OUR GENERAL TERMS AND CONDITIONS AS SET OUT IN OUR CURRENT PRICE SCHEDULE.

FILE 11

FILE 15 10-DEC-04 04114
DATA ACQUIRED 10-DEC-04 20104



FILE 101 10-DEC-04 04110
DATA ACQUIRED 10-DEC-04 03114

RHO (DHMM) 0.0 3.0000
CAL (IN) 6.0000 16.0000
SP (MV) -140.0 -40.00
TENS (LR) 10000.0 0.0
DT (US/F) 150.00 50.000

SENSOR MEASURE POINT TO TOOL ZERO

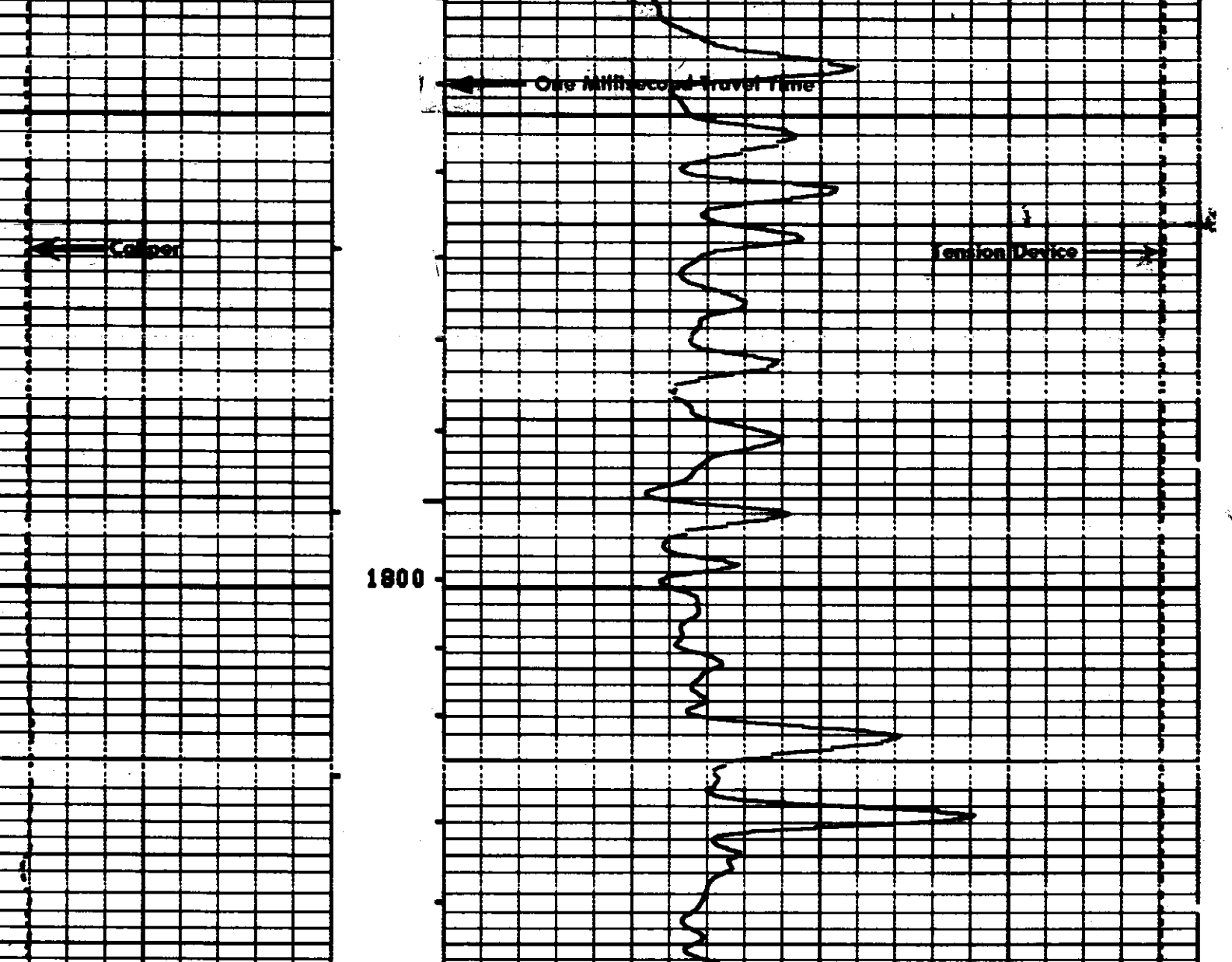
CBL 43.9 FEET
 TT3 40.3 FEET
 TT1 42.9 FEET
 CALI 31.0 FEET
 SPL 6.4 FEET
 SP 2.3 FEET
 TENS 3.5 FEET
 HDIS 35.6 FEET
 AMPL 43.9 FEET
 TT4 39.1 FEET
 TT2 43.9 FEET
 SRAT 41.4 FEET
 ILD 9.4 FEET
 ILW 5.7 FEET
 SPAR 2.5 FEET

PARAMETERS

NAME	VALUE	UNIT	NAME	VALUE	UNIT
MSV1 MF1			DWS	16	
DSIN 5		US	DDEL 200		US
CDTS 100.000			DWCD 512		
DTF 189.000		US/F	DTM 55.6000		US/F
SR 1.00000		OHM	DSEC 4.50000		MHMD
FPHI SPH1			MSEC 6.80000		MHMD
FNHM 1.00000			FEMP 2.00000		
BS 7.87500		IN	BHS OPEN		
DD 0.0		F	DOR 0.0		F
PP RECU					

TAPE NOT MADE

FILE 3 10-DEC-04 03110



REPEAT SECTION FILE 3 10-DEC-04 03105

RHO (DHMM) 0.0 3.0000
CAL (IN) 6.0000 16.0000
DT (US/F) 150.00 50.000
TENS (LR) 10000.0 0.0

SENSOR MEASURE POINT TO TOOL ZERO

CBL 8.2 FEET
 TT3 7.8 FEET
 TT1 7.2 FEET
 CALI 87.3 FEET
 HDIS 0.0 FEET
 AMPL 8.2 FEET
 TT4 3.5 FEET
 TT2 8.2 FEET
 SRAT 5.7 FEET
 TENS 3.5 FEET

PARAMETERS

NAME	VALUE	UNIT	NAME	VALUE	UNIT
MSV1 MF1			DWS	16	
DSIN 5		US	DDEL 200		US
CDTS 100.000			DWCD 512		
DTF 189.000		US/F	DTM 55.6000		US/F
SR 1.00000		OHM	DSEC 4.50000		MHMD
FPHI SPH1			MSEC 6.80000		MHMD
FNHM 1.00000			FEMP 2.00000		
BS 7.87500		IN	BHS OPEN		
DD 0.0		F	DOR 0.0		F
PP RECU					