

COMPENSATED ACOUSTIC VELOCITY LOG

COMPANY REICHHOLD ENERGY CORPORATION
 WELL LONG VIEW FIBER 41-32
 FIELD MIST
 COUNTY COLUMBIA STATE OREGON
 LOCATION 1/4 SECTION SOUTH AND 6 1/4 WEST 31E
 OF THE NORTHEAST CORNER OF
 OTHER SERVICES
 COMPANY REICHHOLD ENERGY CORPORATION
 WELL LONG VIEW FIBER 41-32
 FIELD MIST
 COUNTY COLUMBIA STATE OREGON
 LOCATION 1/4 SECTION SOUTH AND 6 1/4 WEST 31E
 OF THE NORTHEAST CORNER OF
 OTHER SERVICES

DATE 10-14-81
 TIME 10:14-81
 DEPTH 2495
 B.M. LOG NUMBER 437
 CASING - DRILLER 7
 BIT SIZE 6 1/4
 TYPE FLUID IN HOLE LINDSULF
 DENS. VISC. 9.7 @ 147
 pH 1.0 @ 147
 RADIOLATED
 SOURCE SAMPLE
 R. @ Meas Temp 1.20 @ 109 F
 R. @ Meas Temp 1.80 @ 68 F
 R. @ Meas Temp 1.05 @ 104 F
 R. @ BHT 1.05 @ 104 F
 TIME SERVICE 4 HOURS
 MIX MEAS. 104 F @ HIT
 EQUIP. LOCATION 1/4 30' WOODS AND
 WITNESSED BY H. VORHEES

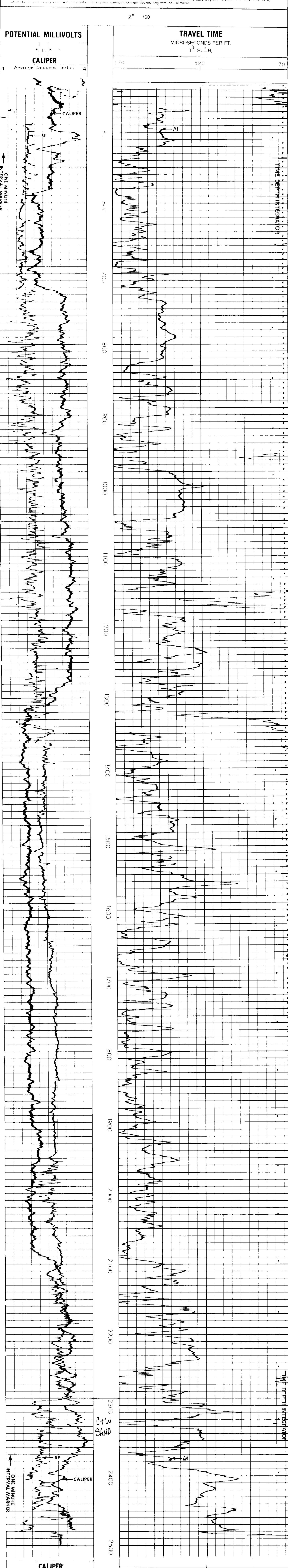
PERMANENT DATUM G.L. - OR 12 Elev. K.B. 870.1
 LOG MEASURED FROM K.B. - OR 12 Elev. 858.9
 DRILLING MEASURED FROM K.B. - OR 12 Elev. 858.17
 F1 Above Perm Datum G.L. 858.17

RECORDED BY
 DEC 21 1981

Service Ticket No. 054968 Remarks

Change in Mud Type or Additional Samples	SCALE CHANGES		
	Type Log	Depth	Scale Down Hole
Date - Sample No.			
Depth - Driller			
Type Fluid in Hole			

Dens. Visc.	ph	Fluid Loss	EQUIPMENT DATA			
			Run No.	Tool Type and No.	Tool Position	Other
R. @ Meas Temp			F 01E	24A 13982		CENTRALIZER ROWSPRING
R. @ Meas Temp			F			
Source R. @			F			
R. @ BHT			F			
R. @ BHT			F			
R. @ BHT			F			



REICHHOLD ENERGY CORPORATION
 LONG VIEW FIBER 41-32
 MIST
 COLUMBIA COUNTY, OREGON

T.D. LOGGED 2495
 T.D. DRILLER 2494
 T.D. WELEX 2490
 ELEV. G.L. 858.9 KB. 870.3

