

**Compenetrated Denilog<sup>®</sup>**  
**Gamma Ray**

COMPANY: OREGON NATURAL GAS CORPORATION  
 WELL: OH 32 B-11  
 FIELD: MIST  
 COUNTY: COLUMBIA STATE: OREGON  
 LOCATION: 1946.7' W. 6 1/2' N. 1/4  
 S. FROM N.E. CORNER  
 OF: D111 S1/4 T17N R17E  
 SEC. 11 TWP. 6N RGE. 50

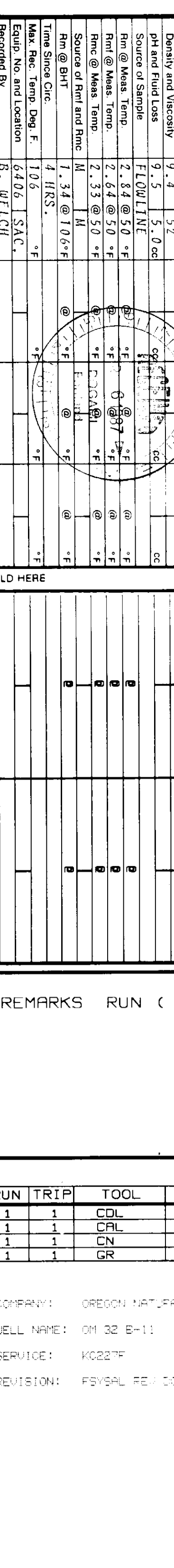
Permanent Datum: G.L. 11.7' Elev. 591.1'  
 Log Measurement from: K.O. 11.7' Elev. 591.1'  
 Drilling Measurement from: 6.7' Elev. 591.1'

Case: 1-30-87  
 Hole No.: QUC  
 Spacing Order: 22880

Depth - Logger: 3195  
 Depth - Logpoint: 2124  
 Depth - Loginterval: 8.71 @ 46.5  
 Casing - Diameter: 4.5 @ 7.8

Bit Size: 7 7/8"  
 Type Fluid in Hole: GEL LIGNO  
 Density and Viscosity: 9.4 @ 5.2  
 pH and Fluid Loss: 7.3 @ 1.0  
 Flow Rate: 2.8 @ 2.0  
 Fract. @ Mass Temp: 2.6 @ 2.0  
 Fract. @ Mass Temp: 2.3 @ 2.0  
 Source of Part and Part: H H  
 Rm @ BHT: 1.34 @ 106°F  
 Time Since Circ: 4 HRS.  
 Max. Rec. Temp. Orig. E.: 105 °F  
 Max. Rec. Temp. Log: 105 °F  
 Estimated Location: S. 1/4 T. 17 N. R. 17 E. S. 1/4  
 Witnessed By: BIR - HEYER

IN MAKING INTERPRETATIONS OF LOGS OUR EMPLOYEES HAVE BEEN ADVISED BY DENLOG THAT ALL INTERFERENCES FROM ELECTRICAL OR OTHER MEASUREMENTS, WE CANNOT AND WE DO NOT GUARANTEE THE ACCURACY OR CORRECTNESS OF ANY INTERFERENCES. WE SHALL NOT BE LIABLE OR RESPONSIBLE FOR ANY LOSS, DAMAGE, INJURY OR EXPENSES INCURRED BY ANY INTERFERENCES FROM ANY INTERFERENCES RESULTING FROM ANY INTERFERENCES HERE BY ANY OF OUR EMPLOYEES.



FOLD HERE

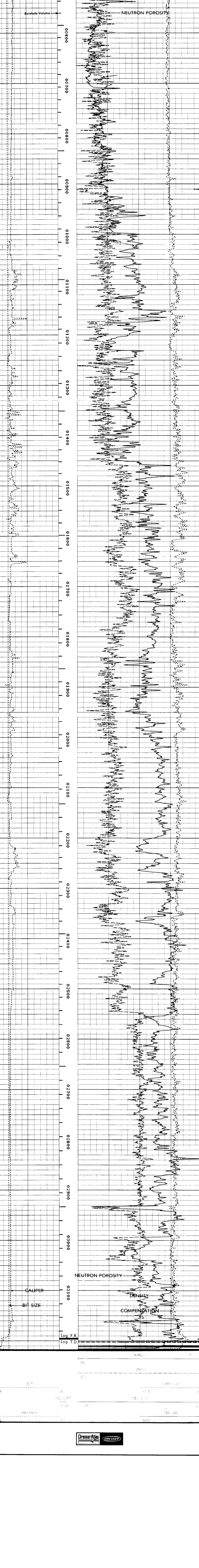
REMARKS RUN ( 1 )

EQUIPMENT DATA

RUN	TRIP	TOOL	SERIAL NO.	SERIES NO.	POSITION
1	1	CDL	42452	2212	DECENT
1	1	CDL	42452	2212	DECENT
1	1	CN	73525	2420	DECENT
1	1	GR			

COMPANY: OREGON NATURAL GAS CORP  
 WELL NAME: OH 32 B-11  
 SERVICE: MIST  
 REVISION: PSYAL RE LOG

DATE: 01 15 87  
 TIME: 12:00:00  
 MODE: RECORD



Log F.R. Log T.D.

