

COMPANY: REICHOLD ENERGY CORPORATION
 WELL: PAUL #34-32 RD-1
 FIELD: MIST
 COUNTY: COLUMBIA
 STATE: OREGON
 LOCATION: 741' N & 2851' E OF THE SOUTH
 SEC: 32 1/4 CORNER TWP: 7N RGE1 25M
 PERMANENT DATUM: GL
 ELEV. ABOVE P.M. DATUM: 614.0 F
 LOG MEASURED FROM: KB
 DRILL. MEASURED FROM: KB
 DATE: 17 SEP 84
 RUN NO: 1
 DEPTH-DRILLER: 2915.0 F
 DEPTH-LOGGER: 2898.0 F
 BTM LOG INTERVAL: 2892.0 F
 TOP LOG INTERVAL: 497.0 F
 CASING-DRILLER: 497 F
 CASING-LOGGER: 497 F
 CASING: 8 5/8"
 BIT SIZE: 7 7/8"

OTHER SERVICES-
 BHC SONIC
 HBT

TYPE FLUID IN HOLE: GEL-LIGHT
 DENSITY: 10.0 LB/G
 VISCOSITY: 25.0 S
 PH: 8.5
 FLUID LOSS: 6.2 CC
 SOURCE OF SAMPLE: FLDLINE
 RM: 2.100 DHMM AT 93.0 DEGF
 RMF: 2.090 DHMM AT 74.0 DEGF
 RMC: 2.550 DHMM AT 71.0 DEGF
 SOURCE RMF/RMC: MEASURED/MEASURED
 RM AT BHT: 1.834 DHMM AT 96.0 DEGF
 RMF AT BHT: 1.643 DHMM AT 96.0 DEGF
 RMC AT BHT: 1.931 DHMM AT 96.0 DEGF
 TIME CIRC. STOPPED: 1600 9-17
 TIME LOGGER ON BTM.: 1830
 MAX. REC. TEMP: 96.0 DEGF
 LOGGING UNIT NO: 8178
 LOGGING UNIT LOC: SACRAMENTO
 RECORDED BY: R. BENTLEY
 WITNESSED BY: M. ALGER/T. THOMAS

REMARKS:
 SONIC CYCLE SKIPS DUE TO UNCONSOLIDATED SANDS PERIODICALLY FROM 1200' AND UP.

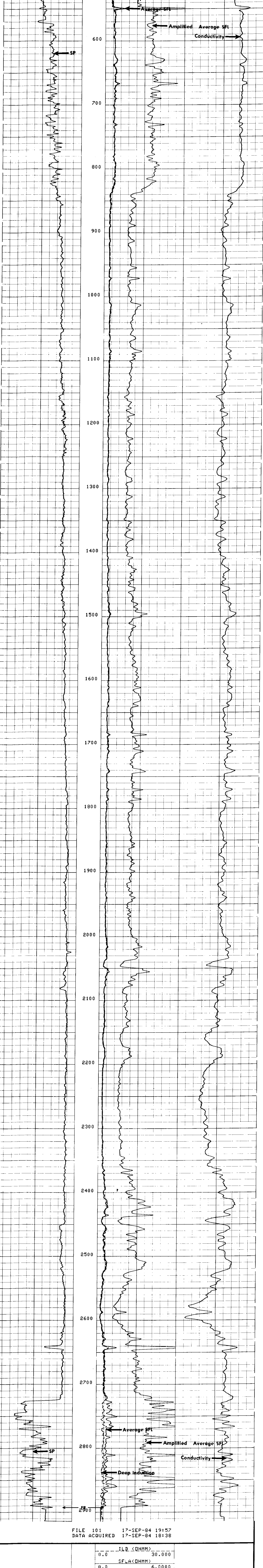
EQUIPMENT NUMBERS-
 DIS 1422 DIC 342 SLS RC 236 SLC FA 1589
 MCD B 1502 IEM BD 686 SLM DA 1281

ALL INTERPRETATIONS ARE OPINIONS BASED ON INFERENCES FROM ELECTRICAL OR OTHER MEASUREMENTS AND WE CANNOT, AND DO NOT GUARANTEE THE ACCURACY OR CORRECTNESS OF ANY INTERPRETATIONS, AND WE SHALL NOT, EXCEPT IN THE CASE OF GROSS OR WILLFUL NEGLIGENCE ON OUR PART, BE LIABLE OR RESPONSIBLE FOR ANY LOSS, COSTS, DAMAGES OR EXPENSES INCURRED OR SUSTAINED BY ANYONE RESULTING FROM ANY INTERPRETATION MADE BY ANY OF OUR OFFICERS, AGENTS OR EMPLOYEES. THESE INTERPRETATIONS ARE ALSO SUBJECT TO OUR GENERAL TERMS AND CONDITIONS AS SET OUT IN OUR CURRENT PRICE SCHEDULE.

FILE 102 17-SEP-84 20:09
 DATA ACQUIRED 17-SEP-84 19:46

SP (MV)	ILD (DHMM)	SFLA(DHMM)	CILD(MMHQ)
-100.0	0.0	0.0	0.0
0.0	30.000	6.0000	1000.0
			0.0

FILE 101 17-SEP-84 20:04
 DATA ACQUIRED 17-SEP-84 19:46



FILE 101 17-SEP-84 19:57
 DATA ACQUIRED 17-SEP-84 18:38

SP (MV)	ILD (DHMM)	SFLA(DHMM)	CILD(MMHQ)
-100.0	0.0	0.0	0.0
0.0	30.000	6.0000	1000.0
			0.0

SENSOR MEASURE POINT TO TOOL ZERO
 CBL 37.0 FEET
 TT3 33.3 FEET
 TT1 36.0 FEET
 CALI 56.1 FEET
 SFL 6.4 FEET
 SP 2.5 FEET
 TENS 2.5 FEET
 NUIS 28.8 FEET
 AMPL 37.0 FEET
 TT4 32.3 FEET
 TT2 37.0 FEET
 SRAT 34.5 FEET
 ILD 9.4 FEET
 ILM 5.7 FEET
 SPAR 2.5 FEET

PARAMETERS

NAME	VALUE	UNIT	NAME	VALUE	UNIT
MSV1	WF1		DHS	16	
DSIN	5	US	DDEL	200	US
CDTS	100.000		DWCD	512	
DTF	189.000	US/F	DTH	56.0000	US/F
SPR	1.00000	DHMM	DSEC	3.30000	MMHO
FPHI	SPHI		MSEC	6.30000	MMHO
FNUM	.620000		FEXP	2.15000	
BS	7.87500	IN	BXS	DPEN	
PF	NORM		DD	0.0	F