

Schlumberger

BOREHOLE COMPENSATED SONIC 5"

CSU

Field Log

COMPANY: REICHOLD ENERGY CORPORATION

WELL: PAUL 34-32

FIELD: MIST-NEHALEN BASIN

COUNTY: COLUMBIA

STATE: OREGON

NATION: USA

LOCATION: 741.73' N & 255.90' EDP

SEC: S 1/4 CORNER TWP: 6N RGE: 9W

PERMANENT DATUM: GL

ELEV. OF PERM. DATUM: 614.7'

LOG MEASURED FROM: KB

DRLG. MEASURED FROM: KB

ELEVATIONS: KB: 626.1'

GL: 614.7'

DATE: 10 NOV 1982

RUN NO: 1

DEPTH-DRILLER: 2699.0'

DEPTH-LOGGER: 2699.0'

2M LOG INTERVAL: 497'

1M LOG INTERVAL: 497'

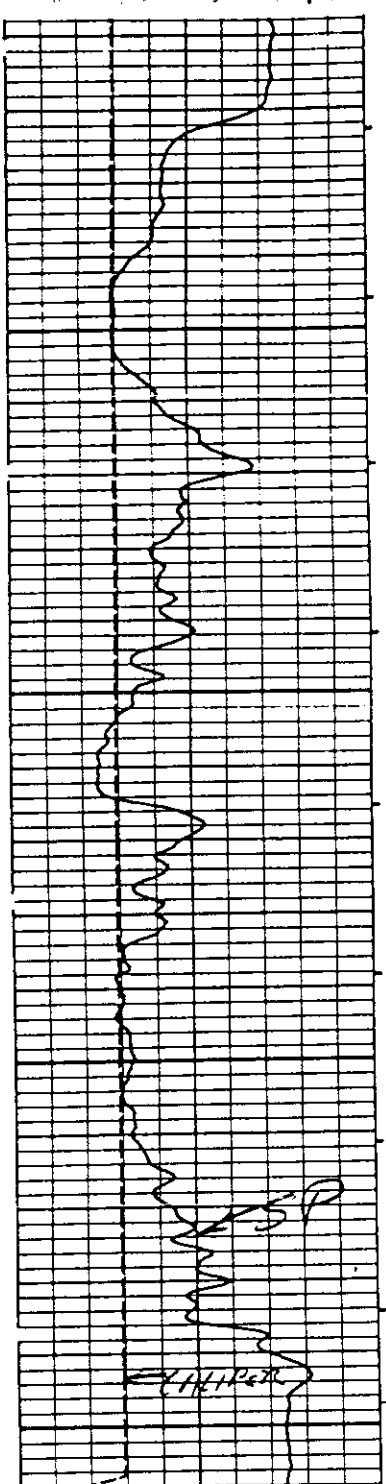
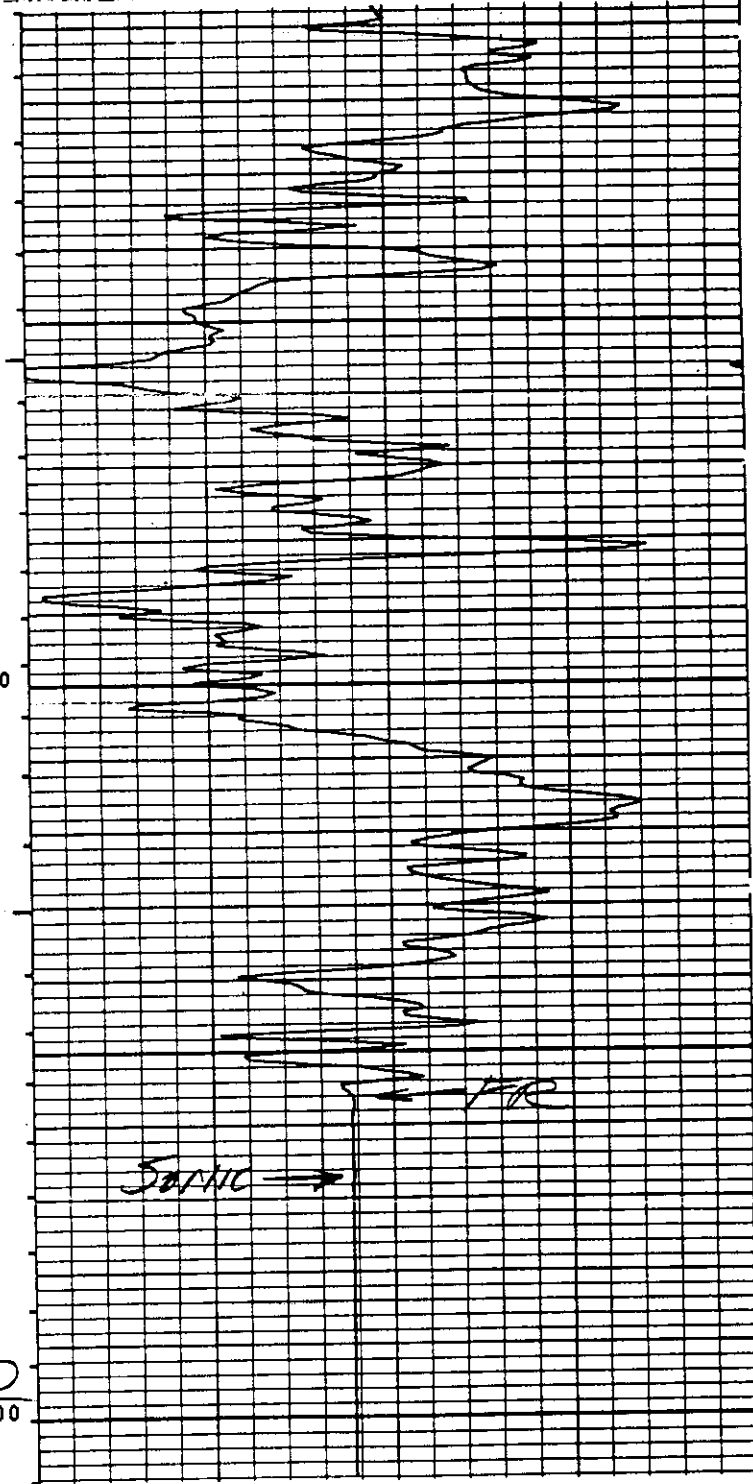
CASING-DRILLER: 497'

CASING-LOGGER: 497'

CASING LOGGER: 8.625

BIT SIZE: 7.875

BIT DEPTH: 2699.1'



TD 2700

FILE 102

CALISIN )