

# Oregon GEO

The Newsletter of the Geological Survey & Services Program

Winter 2023

## Agency Update - New GSS Staff Members

Please join the GS&S program in welcoming three new staff members to the DOGAMI team. In June 2022, Dr. Reed Burgette joined DOGAMI as the new Lidar Coordinator and Remote Sensing Geologist. Dr. Burgette received his Ph.D. in Geological Science from the University of Oregon with a specialty in Neotectonics in 2008. In December 2022, Dr. Lalo Guerrero joined DOGAMI as agency expert on tectonics, active faults, and seismic hazards. Dr. Guerrero earned his Ph.D. at Oregon State University in 2016. In March 2023, DOGAMI welcomed Dr. Michael Darin into his new role as DOGAMI's Eastern Oregon Regional Geologist. Dr. Darin earned a Ph.D. from Northern Arizona University in 2019 and will add significantly to DOGAMI's geological mapping capabilities.



Dr. Reed Burgette



Dr. Lalo Guerrero



Dr. Michael Darin

## Staff Highlights



In March 2023, DOGAMI partnered with the Oregon School for the Deaf, in Salem, Oregon, on a field trip to the Tualatin River National Wildlife Refuge. Students learned about the geologic history of the Willamette Valley, viewed migratory wildlife making its way through the region, and went on a hike around the refuge.



In conjunction with the University of Washington, the University of Oregon, and the Pacific Northwest Seismic Network, DOGAMI staff participated in the Governor's Occupational Health and Safety Conference in Portland in March 2023.

## Oregon Paleo Lands Institute Outreach Project

The Oregon Paleo Lands Institute (OPLI), located in Fossil, Oregon, is a community-based non-profit organization that provides residents and visitors to north-central Oregon opportunities to explore the natural and geologic history of the region. Located near the John Day Fossil Beds National Monument, OPLI has historically offered visitors the chance to explore exhibits at the Oregon Paleo Lands Center and hunt for fossils at a nearby outcrop.

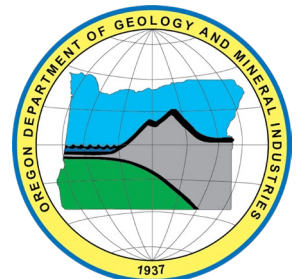


DOGAMI, in partnership with Refugium, LLC, is in the process of developing an outreach program to expand OPLI's ability to engage with community members and increase use of the center. Through a "citizen-science" approach, in addition to hunting for their own fossils, future visitors will be able to submit their finds for analysis and received information related to their sample specimens.

**Currently the Oregon Paleo Lands Center is closed to the public. Please check the Institute website for current hours.**



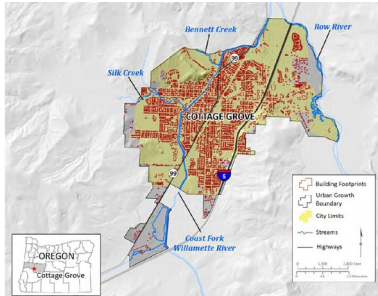
Scan the QR Code above to take the OPLI Stakeholder Survey!



## DOGAMI's Multi-Hazard Risk Assessments

DOGAMI conducts multi-hazard risk assessments for counties and communities throughout the state of Oregon. A risk assessment analyzes and quantifies how different types of hazards might affect the built environment, population, and the cost of recovery, and identifies potential risk. The goal of a risk assessment is to help communities better understand their exposure to risks and increase resilience from natural hazards that are present in their communities. We use the best available, most accurate and detailed information about communities and natural hazards to complete our risk assessments.

Local stakeholders and decision makers can use the assessments to identify opportunities to mitigate risks associated with natural hazards. Risk assessments can be incorporated into local plans, such as Natural Hazard Mitigation Plans, to enhance the decision-making process to lower risk. Once complete, our risk assessments are accessible to the public to further aid in the effort to make communities in Oregon more resilient to natural hazards.



*DOGAMI's Risk Assessments can be found in the Publication Center at <https://www.oregongeology.org/pubs/index.htm>*

## New Publications

Open-File Report O-23-03, Multi-Hazard Risk Report for the City of Cottage Grove, Oregon (<https://www.oregongeology.org/pubs/ofr/O-23-03/p-O-23-03.htm>)

Open-File Report O-23-02, Landslide Inventory Report for Willowa County, Oregon (<https://www.oregongeology.org/pubs/ofr/O-23-02/p-O-23-02.htm>)

Open-File Report O-23-01, Multi-Hazard Risk Report for Tillamook County, Oregon (<https://www.oregongeology.org/pubs/ofr/O-23-01/p-O-23-01.htm>)

Open-File Report O-22-06, Earthquake and tsunami impact analysis for coastal Lane, Douglas, and Coos Counties, Oregon (<https://www.oregongeology.org/pubs/ofr/O-22-06/p-O-22-06.htm>)

## Director's Update

In February, DOGAMI presented the Governor's Recommended Budget (SB 5510) to the Joint Committee on Ways and Means Subcommittee on Natural Resources as part of an informational hearing. The GS&S Program has also been busy in front of the same committee with four Grant Proposal Requests. The USGS STATEMAP Program awarded \$389,613 in 2023-24 for geological mapping in Harney and Walla Walla Basins. The USGS Earth Mapping Resources Initiative (Earth MRI) awarded \$330,000 for a 3-year mapping effort in the McDermitt Caldera, SE Malheur County, starting in mid-2023. These awards are a significant boost to geological mapping in Oregon and in the Harney Basin surface mapping will be augmented with remote sensing data.

## Featured Resources

- Tsunami Clearinghouse ([www.oregontsunami.org](http://www.oregontsunami.org))
- Oregon HazVu: Statewide Geohazards Viewer ([www.oregongeology.org/hazvu/index.htm](http://www.oregongeology.org/hazvu/index.htm))
- DOGAMI Lidar Data ([www.oregongeology.org/lidar/index.htm](http://www.oregongeology.org/lidar/index.htm))
- USGS ShakeAlert Earthquake Early Warning System ([www.oregon.gov/oem/hazardsprep/Pages/orshakealert.aspx](http://www.oregon.gov/oem/hazardsprep/Pages/orshakealert.aspx))

**Scan the QR Code below to take the DOGAMI Customer Satisfaction Survey!**



## About the GS&S Program

DOGAMI's Geological Survey & Services program develops maps, reports, and data to help Oregon manage natural resources and prepare for natural hazards such as earthquakes, tsunamis, landslides, floods, volcanoes, coastal erosion, and climate change.

Contact Us at 971.673.1555 | [dogami-info@oregon.gov](mailto:dogami-info@oregon.gov)

<https://www.oregon.gov/dogami>

Oregon Department of Geology and Mineral Industries  
Geological Survey & Services Program  
800 NE Oregon St., Suite 965, Portland, Oregon, 97232