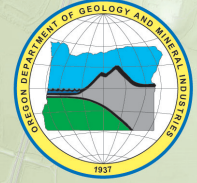


# OREGON DEPARTMENT OF GEOLOGY AND MINERAL INDUSTRIES

VICKI S. MCCONNELL, STATE GEOLOGIST

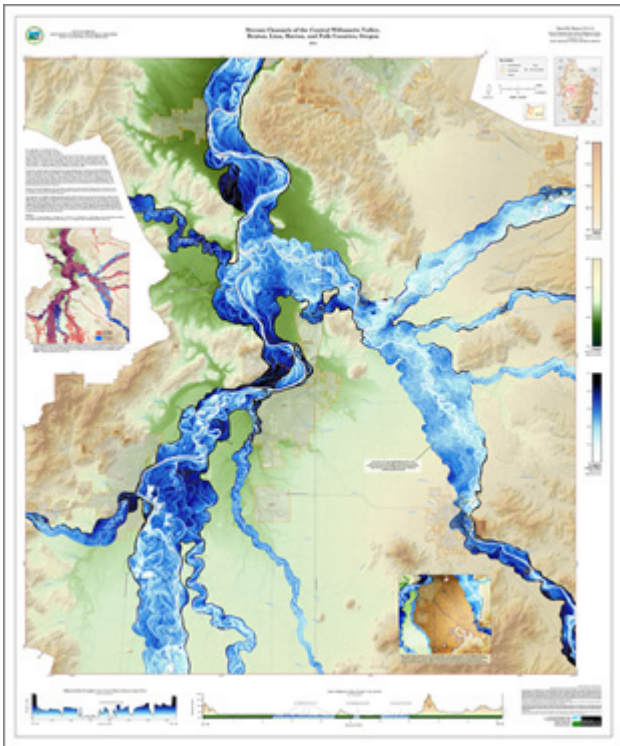


NEWS RELEASE: August 15, 2011

## New map of stream channels of the Central Willamette Valley reveals channel migration

**DOGAMI Open-File Report O-11-14, Stream Channels of the Central Willamette Valley, Benton, Linn, Marion, and Polk Counties, Oregon, by Daniel E. Coe**

“This lidar-based map offers an unprecedented view of the floodplains of the Willamette River and other major streams of the Central Willamette Valley,” says Oregon Department of Geology and Mineral Industries cartographer Dan Coe. “With incredible detail, the map reveals the dynamic pattern of movement the rivers and streams have taken over the past 12,000 years.”



This map depicts the Willamette River as it flows north past Corvallis toward Salem. This region, known as the Central Willamette Valley, is bound to the north by the Salem Hills, to the east by the Cascade Range foothills, and to the west by the Coast Range. Cities in this region include Corvallis, Albany, Lebanon, Stayton, and Monmouth-Independence. This area encompasses fertile farmlands in the lowlands, productive vineyards in the western hills, and dense forest in the Cascade Range. Much of the region's fertility is a result of sediments left behind by ice age floods, known as the Missoula Floods, that occurred between 15,000 and 12,700 years ago.

This publication consists of a 60 x 72 inch map at 1:36,000 scale. A printed copy of each

*DOGAMI's mission is to provide earth science information and regulation to make Oregon safe and prosperous.*

**Media contact:  
Carol DuVernois**

carol.duvernois@state.or.us  
800 NE Oregon St., #28,  
Ste. 965  
Portland, OR 97232  
Phone: (971) 673-1555  
Fax: (971) 673-1562  
www.OregonGeology.org

Mineral Land Regulation and  
Reclamation Program  
229 Broadalbin St. SW  
Albany, OR 97321  
Phone: (541) 967-2039  
Fax: (541) 967-2075  
info@mlrr.oregongeology.com  
Gary W. Lynch,  
Assistant Director

Coastal Field Office  
313 SW 2nd, Ste. D  
Newport, OR 97365  
Phone: (541) 574-6642  
Fax: (541) 265-5241  
Jonathan C. Allan,  
Coastal Team Leader

Eastern Oregon Field Office  
Baker County Courthouse  
1995 3rd St., Ste. 130  
Baker City, OR 978149  
Phone: (541) 523-3133  
Fax: (541) 523-5992  
Jason D. McClaughry,  
Field Geologist

Nature of the Northwest  
Information Center  
800 NE Oregon St., Ste. 965  
Portland, Oregon 97232  
(971) 673-2331  
Email: info@naturenw.org  
Web: www.NatureNW.org  
Donald J. Haines, Manager

page 1 of 2

## OREGON DEPARTMENT OF GEOLOGY AND MINERAL INDUSTRIES

map is available for \$60 and laminated for \$90. See below for order information.

You can preview the report at <http://www.oregongeology.org/pubs/ofr/p-O-11-14.htm>

Other maps in this series show stream channels of the Northern Willamette Valley and the Tualatin Valley.

DOGAMI Open-File Report O-11-14, Stream Channels of the Central Willamette Valley, Benton, Linn, Marion, and Polk Counties, Oregon, can be purchased on CD-ROM for \$15 each from the Nature of the Northwest Information Center (NNW), 800 NE Oregon Street, Suite 965, Portland, Oregon, 97232. You may also call NNW at (971) 673-2331 or order online at <http://www.naturenw.org>. Printed copies of the full color 60 x 72 inch maps are \$60 each or \$90 for a laminated copy. There is a \$4 shipping and handling charge for all mailed items.

The Oregon Department of Geology and Mineral Industries is an independent agency of the State and has a broad responsibility in developing a geologic understanding of natural hazards. We then make this information available to communities and individuals to help reduce the risks from earthquakes, tsunamis, landslides, floods and volcanic eruptions. We assist in the formulation of state policy where an understanding of geologic materials, geologic resources, processes, and hazards are key to decision-making. The Department is also the lead state regulatory agency for mining, oil, gas and geothermal exploration, production and reclamation.

---

Learn more about Oregon's geology online:  
<http://www.OregonGeology.org>



**Media contact:  
Carol DuVernois**

[carol.duvernois@state.or.us](mailto:carol.duvernois@state.or.us)

800 NE Oregon St., #28,  
Ste. 965

Portland, OR 97232

Phone: (971) 673-1555

Fax: (971) 673-1562

[www.OregonGeology.org](http://www.OregonGeology.org)

---

Nature of the Northwest  
Information Center  
800 NE Oregon St., Ste. 965  
Portland, Oregon 97232  
(971) 673-2331  
Email: [info@naturenw.org](mailto:info@naturenw.org)  
Web: [www.NatureNW.org](http://www.NatureNW.org)  
Donald J. Haines, Manager

