

# OREGON DEPARTMENT OF GEOLOGY AND MINERAL INDUSTRIES

Vicki S. McConnell, State Geologist



NEWS RELEASE: February 23, 2012

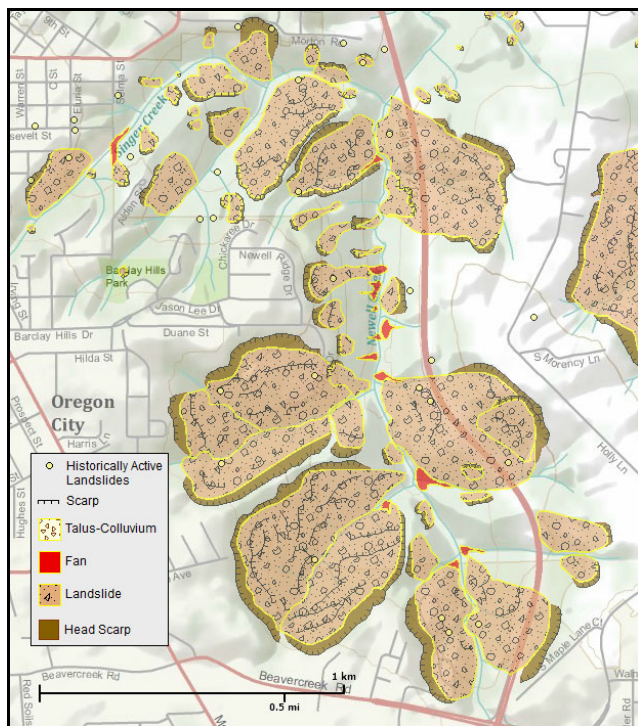
## Updated landslide viewer for Oregon online

**Portland, Oregon:** The Oregon Department of Geology and Mineral Industries (DOGAMI) has released an updated online interactive map viewer for the second release of the Statewide Landslide Information Database (SLIDO-2).

SLIDO-2 web viewer: <http://www.oregongeology.org/sub/slido/index.htm>

Landslides are one of the most common and damaging geologic hazards in Oregon. Average annual damage from landslides in Oregon exceeds \$10 million, and in those years of severe winter storms losses can exceed \$100 million. As population growth continues and development into landslide susceptible terrain occurs, damage and loss from this natural hazard will continue to increase.

“Landslides, especially during rainy seasons, should be no surprise to Oregonians,” said State Geologist Vicki McConnell. “SLIDO-2 is a continuation of our comprehensive and systematic approach to cataloging the nature and scope of the hazard. This information helps us to work with communities to minimize landslide risks.”



*Screenshot of “SLIDO-2”  
interactive web map showing  
mapped landslide deposits in  
the Oregon City area.*

*SLIDO-2 web viewer:  
<http://www.oregongeology.org/sub/slido/index.htm>*

The online map lets viewers zoom to their own addresses to see what landslides have been mapped in the area. Clicking on a landslide on the map displays additional information about the landslide. Be aware that any maps generated from the web tool

*DOGAMI's mission is to provide earth science information and regulation to make Oregon safe and prosperous.*

**Media contact:  
Carol DuVernois**

carol.duvernois@state.or.us

800 NE Oregon St., #28,  
Ste. 965

Portland, OR 97232

Phone: (971) 673-1555

Fax: (971) 673-1562

[www.oregongeology.org](http://www.oregongeology.org)

**Mineral Land Regulation and  
Reclamation Program**

229 Broadalbin St. SW

Albany, OR 97321

Phone: (541) 967-2039

Fax: (541) 967-2075

info@mlrr.oregongeology.com

Gary W. Lynch,

Assistant Director

**Coastal Field Office**

313 SW 2nd, Ste. D

Newport, OR 97365

Phone: (541) 574-6642

Fax: (541) 265-5241

Jonathan C. Allan,

Coastal Team Leader

**Eastern Oregon Field Office**

Baker County Courthouse

1995 3rd St., Ste. 130

Baker City, OR 978149

Phone: (541) 523-3133

Fax: (541) 523-5992

Jason D. McClaughry,

Regional Geologist

**Nature of the Northwest**

**Information Center**

800 NE Oregon St., Ste. 965

Portland, Oregon 97232

(971) 673-2331

Email: [info@naturenw.org](mailto:info@naturenw.org)

Web: [www.NatureNW.org](http://www.NatureNW.org)

Donald J. Haines, Manager

## OREGON DEPARTMENT OF GEOLOGY AND MINERAL INDUSTRIES

are for general information only and should not be used for planning purposes.

SLIDO-2 was partially funded by the Oregon Geospatial Enterprise Office. SLIDO-1 was partially funded by the U.S. Geologic Survey Landslide Hazards Program.

Viewers may also want to read the DOGAMI fact sheet "Understanding Landslide Deposit Maps": <http://www.oregongeology.org/pubs/fs/landslide-inv-factsheet.pdf>

The SLIDO-2 geodatabase is available on CD-ROM for \$25. CD-ROMs can be purchased from the Nature of the Northwest Information Center (NNW), 800 NE Oregon Street, Suite 177, Portland, Oregon, 97232. You may also call NNW at (503) 872-2750 or order online at <http://www.naturenw.org>. There is a \$4 shipping and handling charge for all mailed items. For additional information, please contact the Nature of the Northwest Information Center.

### Contact Information:

For more information about SLIDO-2, its methods, and limitations, contact:

Ian Madin, Chief Scientist  
Oregon Department of Geology  
Ian Madin, Chief Scientist  
(971) 673-1542  
[ian.madin@state.or.us](mailto:ian.madin@state.or.us)

The Oregon Department of Geology and Mineral Industries is an independent agency of the State and has a broad responsibility in developing an understanding of the state's geologic resources and natural hazards. The Department then makes this information available to communities and individuals to help inform and reduce the risks from natural hazards, such as earthquakes, tsunamis, landslides, floods and volcanic eruptions. The Department assists in the formulation of state policy where an understanding of geologic materials, geologic resources, processes, and hazards is key to decision-making. The Department is also the lead state regulatory agency for mining, oil, gas and geothermal exploration, production and reclamation.

Learn more about Oregon's geology online: <http://www.OregonGeology.org>

*DOGAMI's mission is to provide earth science information and regulation to make Oregon safe and prosperous.*

### Media contact:

#### Carol DuVernois

carol.duvernois@state.or.us  
800 NE Oregon St., #28,  
Ste. 965  
Portland, OR 97232  
Phone: (971) 673-1555  
Fax: (971) 673-1562  
[www.oregongeology.org](http://www.oregongeology.org)

### Mineral Land Regulation and Reclamation Program

229 Broadalbin St. SW  
Albany, OR 97321  
Phone: (541) 967-2039  
Fax: (541) 967-2075  
[info@mlrr.oregongeology.com](mailto:info@mlrr.oregongeology.com)  
Gary W. Lynch,  
Assistant Director

### Coastal Field Office

313 SW 2nd, Ste. D  
Newport, OR 97365  
Phone: (541) 574-6642  
Fax: (541) 265-5241  
Jonathan C. Allan,  
Coastal Team Leader

### Eastern Oregon Field Office

Baker County Courthouse  
1995 3rd St., Ste. 130  
Baker City, OR 978149  
Phone: (541) 523-3133  
Fax: (541) 523-5992  
Jason D. McClaughry,  
Regional Geologist

### Nature of the Northwest Information Center

800 NE Oregon St., Ste. 965  
Portland, Oregon 97232  
(971) 673-2331  
Email: [info@naturenw.org](mailto:info@naturenw.org)  
Web: [www.NatureNW.org](http://www.NatureNW.org)  
Donald J. Haines, Manager