

OREGON DEPARTMENT OF GEOLOGY AND MINERAL INDUSTRIES

Vicki S. McConnell, State Geologist

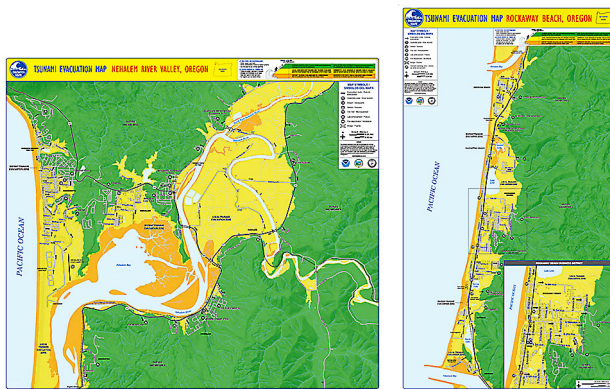


NEWS RELEASE: April 27, 2012

Tsunami evacuation maps for Nehalem River Valley area and Rockaway Beach released

Portland, Oregon: The Oregon Department of Geology and Mineral Industries (DOGAMI) has released tsunami evacuation brochures for the communities of Manzanita, Nehalem, Wheeler, and Rockaway Beach in central Tillamook County.

The maps in these brochures show modeled tsunami evacuation zones for both local-source (Cascadia Subduction Zone) and distant-source (such as from Alaska) tsunami scenarios. The maps also show evacuation routes and assembly areas.



If you are in a coastal area and the ground shakes for an extended period of time, a local-source tsunami may be coming. Don't wait for more warning; evacuate to high ground as quickly as possible.

<< [Nehalem River Valley](#) (left) and [Rockaway Beach](#) (right) tsunami evacuation maps. Evacuate from yellow and orange areas to green area.

Distant tsunamis are not nearly as dangerous as local ones; people will have several hours instead of only minutes to evacuate. Learn more about how to prepare for earthquakes and tsunamis by visiting <http://www.OregonTsunami.org>

The evacuation brochures are available free for download from the <http://www.OregonGeology.org> and <http://www.OregonTsunami.org> websites.

Contact Information:

Ian Madin, Chief Scientist, Oregon Department of Geology and Mineral Industries telephone (971) 673-1542; email ian.madin@dogami.state.or.us

The Oregon Department of Geology and Mineral Industries is an independent agency of the State and has a broad responsibility in developing an understanding of the state's geologic resources and natural hazards. The Department then makes this information available to communities and individuals to help inform and reduce the risks from natural hazards, such as earthquakes, tsunamis, landslides, floods and volcanic eruptions. The Department assists in the formulation of state policy where an understanding of geologic materials, geologic resources, processes, and hazards is key to decision-making. The Department is also the lead state regulatory agency for mining, oil, gas and geothermal exploration, production and reclamation.

DOGAMI's mission is to provide earth science information and regulation to make Oregon safe and prosperous.

Media contact:
Carol DuVernois

carol.duvernois@state.or.us

800 NE Oregon St., #28,
Ste. 965

Portland, OR 97232

Phone: (971) 673-1555

Fax: (971) 673-1562

www.OregonGeology.org

Mineral Land Regulation and Reclamation Program

229 Broadalbin St. SW

Albany, OR 97321

Phone: (541) 967-2039

Fax: (541) 967-2075

info@mlrr.oregongeology.com

Gary W. Lynch,
Assistant Director

Coastal Field Office

313 SW 2nd, Ste. D

Newport, OR 97365

Phone: (541) 574-6642

Fax: (541) 265-5241

Jonathan C. Allan,
Coastal Team Leader

Eastern Oregon Field Office

Baker County Courthouse

1995 3rd St., Ste. 130

Baker City, OR 978149

Phone: (541) 523-3133

Fax: (541) 523-5992

Jason D. McClaughry,
Regional Geologist

Nature of the Northwest Information Center

800 NE Oregon St., Ste. 965

Portland, Oregon 97232

(971) 673-2331

Email: info@naturenw.org

Web: www.NatureNW.org

Donald J. Haines, Manager

page 1 of 1