

# OREGON DEPARTMENT OF GEOLOGY AND MINERAL INDUSTRIES

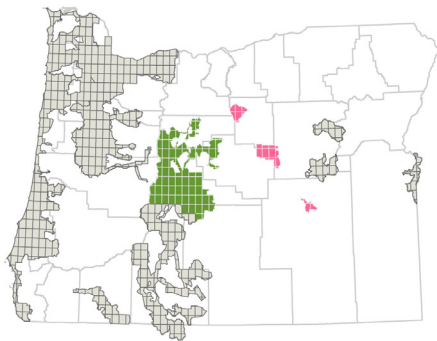
Vicki S. McConnell, State Geologist



NEWS RELEASE: October 26, 2012

## Lidar data available for Burns, Deschutes, Ochoco, and Pine Creek areas

Portland, Oregon: The Oregon Department of Geology and Mineral Industries (DOGAMI) is releasing more lidar data in the agency's Lidar Data Quadrangle series. The new publications cover portions of Crook, Deschutes, Grant, Harney, Jefferson, Klamath, Lake, Lane, and Wheeler counties. Lidar, a laser-mapping technology, allows for amazingly detailed and accurate mapping of the earth's surface.



### ***DOGAMI Lidar Data Quadrangle (LDQ) Series coverage as of 10/26/12.***

***Pink*** – newly released data for Burns,  
Pine Creek and Ochoco areas.

***Green*** – re-released and new data for  
the Deschutes area.

***Gray*** – previously released LDQ data.

*DOGAMI's mission is to provide  
earth science information and  
regulation to make Oregon  
safe and prosperous.*

### **Media contact: Carol DuVernois**

carol.duvernois@state.or.us  
800 NE Oregon St., #28,  
Ste. 965  
Portland, OR 97232  
Phone: (971) 673-1555  
Fax: (971) 673-1562  
www.OregonGeology.org

### **Mineral Land Regulation and Reclamation Program**

229 Broadalbin St. SW  
Albany, OR 97321  
Phone: (541) 967-2039  
Fax: (541) 967-2075  
info@mlrr.oregongeology.com  
Gary W. Lynch,  
Assistant Director

### **Coastal Field Office**

313 SW 2nd, Ste. D  
Newport, OR 97365  
Phone: (541) 574-6642  
Fax: (541) 265-5241  
Jonathan C. Allan,  
Coastal Team Leader

### **Eastern Oregon Field Office**

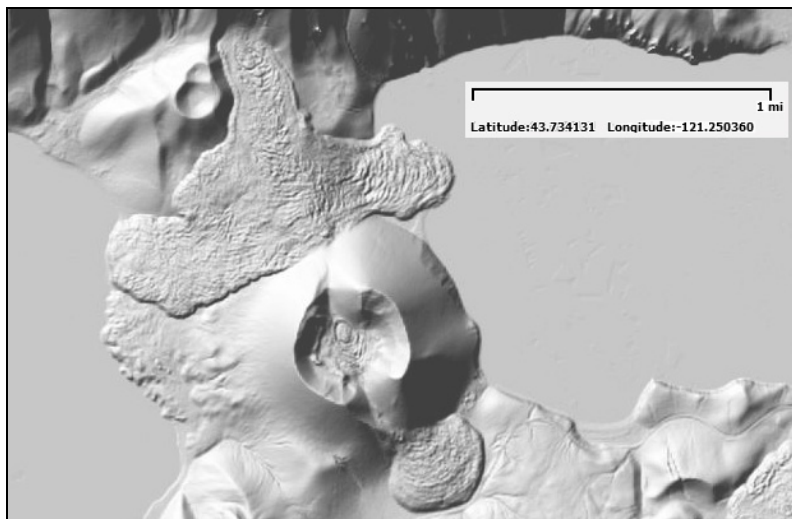
Baker County Courthouse  
1995 3rd St., Ste. 130  
Baker City, OR 978149  
Phone: (541) 523-3133  
Fax: (541) 523-5992  
Jason D. McLaughry,  
Regional Geologist

### **Nature of the Northwest Information Center**

800 NE Oregon St., Ste. 965  
Portland, Oregon 97232  
(971) 673-2331  
Email: info@naturenw.org  
Web: www.NatureNW.org  
Donald J. Haines, Manager

page 1 of 2

*Volcanic cones  
and flows  
between Paulina  
Lake (left) and  
East Lake (right),  
in Newberry  
Crater, southeast  
of Bend, Oregon.*



Imagery of these data can be viewed online along with other lidar coverage for the state by using the DOGAMI lidar data viewer:

<http://www.oregongeology.org/sub/lidardataviewer/index.htm>

More detailed coverage information is provided in these index map PDFs:

**Burns:** [http://www.oregongeology.org/pubs/ldq/Lidar\\_Series\\_Index\\_Map\\_Burns.pdf](http://www.oregongeology.org/pubs/ldq/Lidar_Series_Index_Map_Burns.pdf)

**Deschutes:** [http://www.oregongeology.org/pubs/ldq/Lidar\\_Series\\_Index\\_Map\\_Deschutes\\_2012.pdf](http://www.oregongeology.org/pubs/ldq/Lidar_Series_Index_Map_Deschutes_2012.pdf)

## OREGON DEPARTMENT OF GEOLOGY AND MINERAL INDUSTRIES

**Ochoco:** [http://www.oregongeology.org/pubs/ldq/Lidar\\_Series\\_Index\\_Map\\_Ochoco.pdf](http://www.oregongeology.org/pubs/ldq/Lidar_Series_Index_Map_Ochoco.pdf)

**Pine Creek:** [http://www.oregongeology.org/pubs/ldq/Lidar\\_Series\\_Index\\_Map\\_Pine\\_Creek.pdf](http://www.oregongeology.org/pubs/ldq/Lidar_Series_Index_Map_Pine_Creek.pdf)

Under the auspices of the Oregon Lidar Consortium, these lidar data and data products were collected in whole or part through funding provided by the following — **Burns:** Federal Emergency Management Agency (FEMA); **Deschutes:** City of Sisters, the Oregon Watershed Enhancement Board (OWEB) (using Measure 66 Lottery Funds consistent with the purposes of the Oregon Plan for Salmon and Watersheds), Oregon Parks and Recreation Department, Oregon Water Resources Department, U.S. Geological Survey (USGS), USDA Forest Service, Natural Resources Conservation Service, and Alta Rock. Data for this release were also donated by Portland General Electric; **Ochoco:** United States Forest Service; **Pine Creek:** Portland State University.

Lidar Data Quadrangle (LDQ) series publications are available on DVD and require specialty GIS software to view and use. LDQ series publications can be purchased directly via the web tool, <http://www.oregongeology.org/sub/lidardataviewer/index.htm>, or from the Nature of the Northwest Information Center (NNW), 800 NE Oregon Street, Suite 177, Portland, Oregon, 97232. You may also call NNW at (503) 872-2750 or order online at <http://www.naturenw.org>. There is a \$4.95 shipping and handling charge for all mailed items. For additional information, please contact the Nature of the Northwest Information Center.

### Contact Information:

Oregon Department of Geology  
Ian Madin, Chief Scientist  
(971) 673-1542  
[ian.madin@state.or.us](mailto:ian.madin@state.or.us)

The Oregon Department of Geology and Mineral Industries is an independent agency of the State and has a broad responsibility in developing an understanding of the state's geologic resources and natural hazards. The Department then makes this information available to communities and individuals to help inform and reduce the risks from natural hazards, such as earthquakes, tsunamis, landslides, floods and volcanic eruptions. The Department assists in the formulation of state policy where an understanding of geologic materials, geologic resources, processes, and hazards is key to decision-making. The Department is also the lead state regulatory agency for mining, oil, gas and geothermal exploration, production and reclamation.

Learn more about Oregon's geology online: <http://www.OregonGeology.org>

###

*DOGAMI's mission is to provide earth science information and regulation to make Oregon safe and prosperous.*

### Media contact:

**Carol DuVernois**

[carol.duvernois@state.or.us](mailto:carol.duvernois@state.or.us)  
800 NE Oregon St., #28,  
Ste. 965  
Portland, OR 97232  
Phone: (971) 673-1555  
Fax: (971) 673-1562  
[www.OregonGeology.org](http://www.OregonGeology.org)

### Mineral Land Regulation and Reclamation Program

229 Broadalbin St. SW  
Albany, OR 97321  
Phone: (541) 967-2039  
Fax: (541) 967-2075  
[info@mlrr.oregongeology.com](mailto:info@mlrr.oregongeology.com)  
Gary W. Lynch,  
Assistant Director

### Coastal Field Office

313 SW 2nd, Ste. D  
Newport, OR 97365  
Phone: (541) 574-6642  
Fax: (541) 265-5241  
Jonathan C. Allan,  
Coastal Team Leader

### Eastern Oregon Field Office

Baker County Courthouse  
1995 3rd St., Ste. 130  
Baker City, OR 978149  
Phone: (541) 523-3133  
Fax: (541) 523-5992  
Jason D. McCloughry,  
Regional Geologist

### Nature of the Northwest Information Center

800 NE Oregon St., Ste. 965  
Portland, Oregon 97232  
(971) 673-2331  
Email: [info@naturenw.org](mailto:info@naturenw.org)  
Web: [www.NatureNW.org](http://www.NatureNW.org)  
Donald J. Haines, Manager