

# OREGON DEPARTMENT OF GEOLOGY AND MINERAL INDUSTRIES

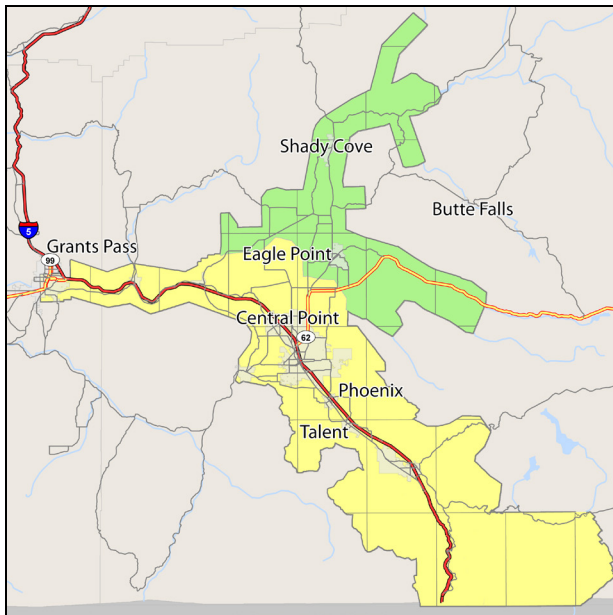
Vicki S. McConnell, State Geologist



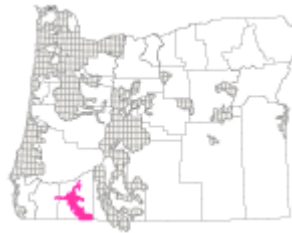
NEWS RELEASE: November 2, 2012

## Additional lidar data available for Rogue Valley area

Portland, Oregon: The Oregon Department of Geology and Mineral Industries (DOGAMI) is releasing more lidar data in the agency's Lidar Data Quadrangle (LDQ) series. The new publications cover portions of Jackson and Josephine counties. Lidar, a laser-mapping technology, allows for amazingly detailed and accurate mapping of the earth's surface.

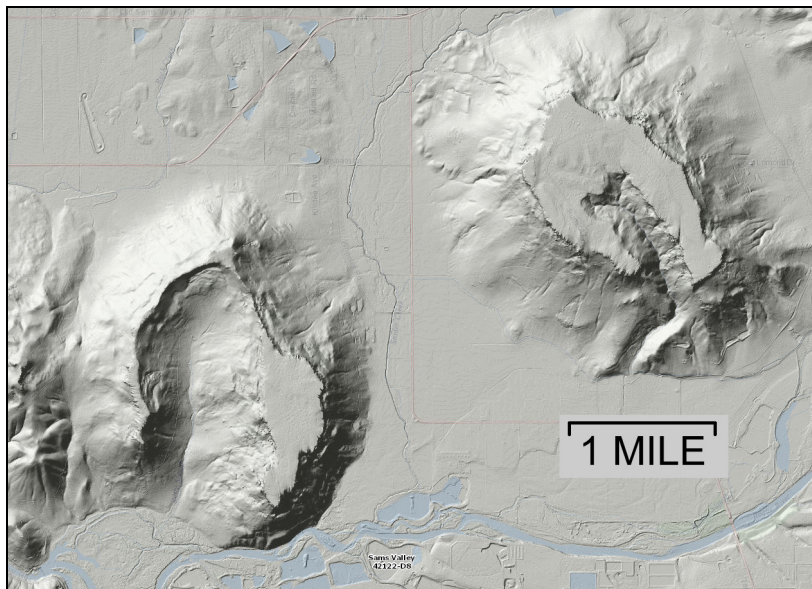


(left) **ROGUE VALLEY 2012 EXTENT**  
Green – new data for the Rogue Valley area; yellow – re-released data for the Rogue Valley area.



(above) **DOGAMI Lidar Data Quadrangle (LDQ) Series coverage as of 11/2/2012.** Pink – Rogue Valley 2012 extent; gray – other released LDQ publications.

Lidar imagery of (right), Upper Table Mountain (left) Lower Table Mountain, and (bottom) Rogue River north of Central Point, Oregon. This is a screen capture from the [DOGAMI Lidar Data Viewer](#).



*DOGAMI's mission is to provide earth science information and regulation to make Oregon safe and prosperous.*

**Media contact:**  
**Carol DuVernois**

carol.duvernois@state.or.us

800 NE Oregon St., #28,  
Ste. 965

Portland, OR 97232

Phone: (971) 673-1555

Fax: (971) 673-1562

[www.OregonGeology.org](http://www.OregonGeology.org)

**Mineral Land Regulation and Reclamation Program**

229 Broadalbin St. SW

Albany, OR 97321

Phone: (541) 967-2039

Fax: (541) 967-2075

[info@mlrr.oregongeology.com](mailto:info@mlrr.oregongeology.com)

Gary W. Lynch,  
Assistant Director

**Coastal Field Office**

313 SW 2nd, Ste. D

Newport, OR 97365

Phone: (541) 574-6642

Fax: (541) 265-5241

Jonathan C. Allan,  
Coastal Team Leader

**Eastern Oregon Field Office**

Baker County Courthouse

1995 3rd St., Ste. 130

Baker City, OR 978149

Phone: (541) 523-3133

Fax: (541) 523-5992

Jason D. McClaughry,  
Regional Geologist

**Nature of the Northwest Information Center**

800 NE Oregon St., Ste. 965

Portland, Oregon 97232

(971) 673-2331

Email: [info@naturenw.org](mailto:info@naturenw.org)

Web: [www.NatureNW.org](http://www.NatureNW.org)

Donald J. Haines, Manager

## OREGON DEPARTMENT OF GEOLOGY AND MINERAL INDUSTRIES

Imagery of these data can be viewed online along with other lidar coverage for the state by using the DOGAMI lidar data viewer:

<http://www.oregongeology.org/sub/lidardataviewer/index.htm>

More detailed coverage information for the Rogue Valley area is provided in this index map PDF:

[http://www.oregongeology.org/pubs/ldq/Lidar\\_Series\\_Index\\_Map\\_Rogue\\_Valley\\_2012.pdf](http://www.oregongeology.org/pubs/ldq/Lidar_Series_Index_Map_Rogue_Valley_2012.pdf)

Under the auspices of the Oregon Lidar Consortium, these lidar data and data products were collected in whole or part through funding provided by the following — Federal Emergency Management Agency (FEMA) (2010 data); Oregon Department of Transportation and the City of Medford (2009 data); Rogue Valley Council of Governments (RVCOG) (2007 data); U.S. Forest Service (2006 data); and the Bureau of Land Management (2002 data).

Lidar Data Quadrangle (LDQ) series publications are available on DVD and require specialty GIS software to view and use. LDQ series publications can be purchased directly via the web tool, <http://www.oregongeology.org/sub/lidardataviewer/index.htm>, or from the Nature of the Northwest Information Center (NNW), 800 NE Oregon Street, Suite 177, Portland, Oregon, 97232. You may also call NNW at (503) 872-2750 or order online at <http://www.naturenw.org>. There is a \$4.95 shipping and handling charge for all mailed items. For additional information, please contact the Nature of the Northwest Information Center.

### Contact Information:

Oregon Department of Geology

Ian Madin, Chief Scientist

(971) 673-1542

[ian.madin@state.or.us](mailto:ian.madin@state.or.us)

The Oregon Department of Geology and Mineral Industries is an independent agency of the State and has a broad responsibility in developing an understanding of the state's geologic resources and natural hazards. The Department then makes this information available to communities and individuals to help inform and reduce the risks from natural hazards, such as earthquakes, tsunamis, landslides, floods and volcanic eruptions. The Department assists in the formulation of state policy where an understanding of geologic materials, geologic resources, processes, and hazards is key to decision-making. The Department is also the lead state regulatory agency for mining, oil, gas and geothermal exploration, production and reclamation.

Learn more about Oregon's geology online: <http://www.OregonGeology.org>

###

*DOGAMI's mission is to provide earth science information and regulation to make Oregon safe and prosperous.*

### Media contact:

**Carol DuVernois**

[carol.duvernois@state.or.us](mailto:carol.duvernois@state.or.us)

800 NE Oregon St., #28,  
Ste. 965

Portland, OR 97232

Phone: (971) 673-1555

Fax: (971) 673-1562

[www.OregonGeology.org](http://www.OregonGeology.org)

### Mineral Land Regulation and Reclamation Program

229 Broadalbin St. SW

Albany, OR 97321

Phone: (541) 967-2039

Fax: (541) 967-2075

[info@mlrr.oregongeology.com](mailto:info@mlrr.oregongeology.com)

Gary W. Lynch,

Assistant Director

### Coastal Field Office

313 SW 2nd, Ste. D

Newport, OR 97365

Phone: (541) 574-6642

Fax: (541) 265-5241

Jonathan C. Allan,

Coastal Team Leader

### Eastern Oregon Field Office

Baker County Courthouse

1995 3rd St., Ste. 130

Baker City, OR 978149

Phone: (541) 523-3133

Fax: (541) 523-5992

Jason D. McClaughry,

Regional Geologist

### Nature of the Northwest Information Center

800 NE Oregon St., Ste. 965

Portland, Oregon 97232

(971) 673-2331

Email: [info@naturenw.org](mailto:info@naturenw.org)

Web: [www.NatureNW.org](http://www.NatureNW.org)

Donald J. Haines, Manager