

# OREGON DEPARTMENT OF GEOLOGY AND MINERAL INDUSTRIES

Vicki S. McConnell, State Geologist



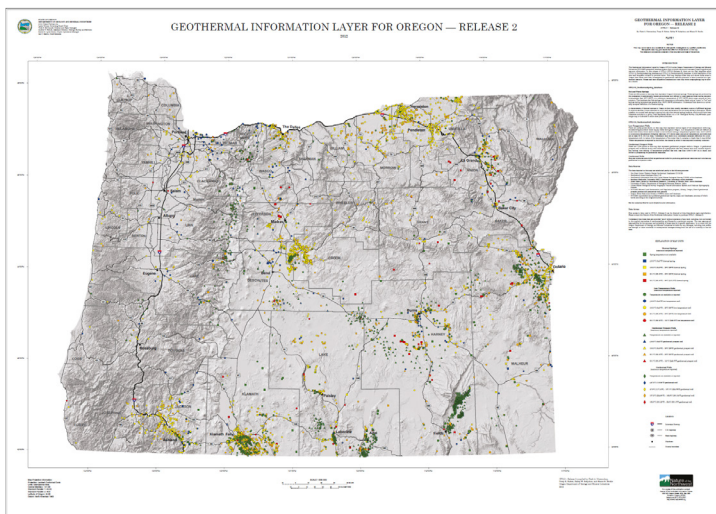
NEWS RELEASE: December 20, 2012

## Geothermal Information Layer for Oregon, Release 2

*A centralized database system of Oregon's geothermal resource information*

Portland, Oregon: the Oregon Department of Geology and Mineral Industries (DOGAMI) has released a new Geothermal Information Layer for Oregon.

**Geothermal Information Layer for Oregon, Release 2 (GTILO-2)** is a spatial database that stores Oregon's geothermal resource information. The datasets in GTILO-2 are managed in a Geographic Information System (GIS), where the data can be displayed, analyzed, and viewed interactively with other data. Specialty GIS software is required to access and view the data.



*74 x 54 inch map plate showing some Geothermal Layer for Oregon, release 2 (GTILO-2) data. This plate is available as part of the GTILO-2 publication and can be downloaded from the GTILO-2 web site.*

"This centralized database of Oregon's field and geothermal indicators is a powerful tool that the geothermal industry can use to reevaluate earlier geothermal exploration efforts but also develop new approaches that may find 'hidden' geothermal resources in the state," according to Clark Niewendorp, DOGAMI geothermal resource evaluator. "We think GTILO-2 also provides fundamental information about the extent to which renewable geothermal resources can contribute to the demand for electricity in Oregon."

You can download GTILO-2 data at: <http://www.oregongeology.org/sub/gtilo/index.htm>

GTILO-2 can also be purchased on CD-ROM for \$30 each from the Nature of the Northwest Information Center (NNW), 800 NE Oregon Street, Suite 965, Portland, Oregon, 97232. A color plot of the map plate is available for \$40 each. You may also call NNW at (971) 673-2331 or order online at <http://www.NatureNW.org>. There is a \$4.95 shipping and handling charge for all mailed items.

*DOGAMI's mission is to provide earth science information and regulation to make Oregon safe and prosperous.*

**Media contact:**  
**Carol DuVernois**

carol.duvernois@state.or.us  
800 NE Oregon St., #28,  
Ste. 965  
Portland, OR 97232  
Phone: (971) 673-1555  
Fax: (971) 673-1562  
[www.OregonGeology.org](http://www.OregonGeology.org)

### **Mineral Land Regulation and Reclamation Program**

229 Broadalbin St. SW  
Albany, OR 97321  
Phone: (541) 967-2039  
Fax: (541) 967-2075  
[info@mlrr.oregongeology.com](mailto:info@mlrr.oregongeology.com)  
Gary W. Lynch,  
Assistant Director

### **Coastal Field Office**

313 SW 2nd, Ste. D  
Newport, OR 97365  
Phone: (541) 574-6642  
Fax: (541) 265-5241  
Jonathan C. Allan,  
Coastal Team Leader

### **Eastern Oregon Field Office**

Baker County Courthouse  
1995 3rd St., Ste. 130  
Baker City, OR 978149  
Phone: (541) 523-3133  
Fax: (541) 523-5992  
Jason D. McClaughry,  
Regional Geologist

### **Nature of the Northwest Information Center**

800 NE Oregon St., Ste. 965  
Portland, Oregon 97232  
(971) 673-2331  
Email: [info@naturenw.org](mailto:info@naturenw.org)  
Web: [www.NatureNW.org](http://www.NatureNW.org)  
Donald J. Haines, Manager

## OREGON DEPARTMENT OF GEOLOGY AND MINERAL INDUSTRIES

The compilation of GTILO-2 was funded by the U.S. Department of Energy's Geothermal Technologies Program for the National Geothermal Data System.

### Contact Information:

Oregon Department of Geology  
Clark Niewendorp, Geothermal Resource Evaluator  
(971) 673-1540  
clark.niewendorp@state.or.us

---

The Oregon Department of Geology and Mineral Industries is an independent agency of the State and has a broad responsibility in developing an understanding of the state's geologic resources and natural hazards. The Department then makes this information available to communities and individuals to help inform and reduce the risks from natural hazards, such as earthquakes, tsunamis, landslides, floods and volcanic eruptions. The Department assists in the formulation of state policy where an understanding of geologic materials, geologic resources, processes, and hazards is key to decision-making. The Department is also the lead state regulatory agency for mining, oil, gas and geothermal exploration, production and reclamation.

Learn more about Oregon's geology online: <http://www.OregonGeology.org>

*DOGAMI's mission is to provide earth science information and regulation to make Oregon safe and prosperous.*

### Media contact:

#### Carol DuVernois

carol.duvernois@state.or.us  
800 NE Oregon St., #28,  
Ste. 965  
Portland, OR 97232  
Phone: (971) 673-1555  
Fax: (971) 673-1562  
[www.OregonGeology.org](http://www.OregonGeology.org)

### Mineral Land Regulation and Reclamation Program

229 Broadalbin St. SW  
Albany, OR 97321  
Phone: (541) 967-2039  
Fax: (541) 967-2075  
info@mlrr.oregongeology.com  
Gary W. Lynch,  
Assistant Director

### Coastal Field Office

313 SW 2nd, Ste. D  
Newport, OR 97365  
Phone: (541) 574-6642  
Fax: (541) 265-5241  
Jonathan C. Allan,  
Coastal Team Leader

### Eastern Oregon Field Office

Baker County Courthouse  
1995 3rd St., Ste. 130  
Baker City, OR 978149  
Phone: (541) 523-3133  
Fax: (541) 523-5992  
Jason D. McClaughry,  
Regional Geologist

### Nature of the Northwest Information Center

800 NE Oregon St., Ste. 965  
Portland, Oregon 97232  
(971) 673-2331  
Email: [info@naturenw.org](mailto:info@naturenw.org)  
Web: [www.NatureNW.org](http://www.NatureNW.org)  
Donald J. Haines, Manager