

OREGON DEPARTMENT OF GEOLOGY AND MINERAL INDUSTRIES

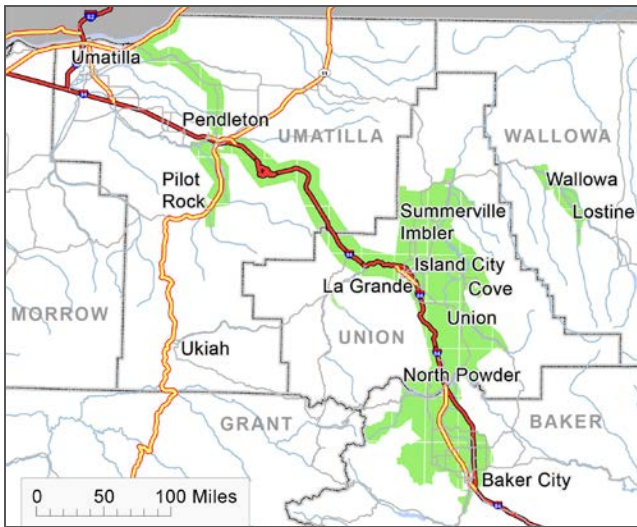
Vicki S. McConnell, State Geologist



NEWS RELEASE: February 5, 2013

New lidar data available for northeastern Oregon

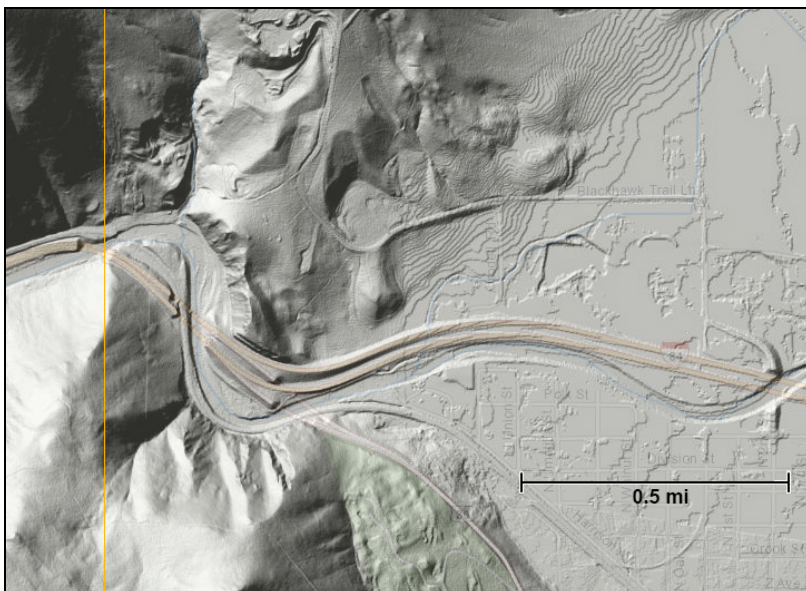
Portland, Oregon: The Oregon Department of Geology and Mineral Industries (DOGAMI) is releasing lidar data that cover portions of Union, Umatilla, Baker, and Wallowa counties in the agency's Lidar Data Quadrangle (LDQ) series. Lidar, a laser-mapping technology, allows for amazingly detailed and accurate mapping of the earth's surface.



(left) **NORTHEAST OREGON 2013
LIDAR PROJECT EXTENT**



(above) *DOGAMI Lidar Data
Quadrangle (LDQ) Series coverage as
of 02/2013. Green – Northeast
Oregon project extent; gray – other
released DOGAMI LDQ publications.*



(right) *Bare-earth lidar
imagery of I-84 and
Grande Ronde River
northwest of La
Grande, Oregon.
Union County
Fairgrounds are right
of center. This is a
screen capture from
the [DOGAMI Lidar
Data Viewer](#).*

DOGAMI's mission is to provide earth science information and regulation to make Oregon safe and prosperous.

Media contact: Carol DuVernois

carol.duvernois@state.or.us
800 NE Oregon St., #28,
Ste. 965
Portland, OR 97232
Phone: (971) 673-1555
Fax: (971) 673-1562
www.OregonGeology.org

Mineral Land Regulation and Reclamation Program

229 Broadalbin St. SW
Albany, OR 97321
Phone: (541) 967-2039
Fax: (541) 967-2075
info@mlrr.oregongeology.com
Gary W. Lynch,
Assistant Director

Coastal Field Office

313 SW 2nd, Ste. D
Newport, OR 97365
Phone: (541) 574-6642
Fax: (541) 265-5241
Jonathan C. Allan,
Coastal Team Leader

Eastern Oregon Field Office

Baker County Courthouse
1995 3rd St., Ste. 130
Baker City, OR 978149
Phone: (541) 523-3133
Fax: (541) 523-5992
Jason D. McCloughry,
Regional Geologist

Nature of the Northwest Information Center

800 NE Oregon St., Ste. 965
Portland, Oregon 97232
(971) 673-2331
Email: info@naturenw.org
Web: www.NatureNW.org
Donald J. Haines, Manager

OREGON DEPARTMENT OF GEOLOGY AND MINERAL INDUSTRIES

Imagery of these data can be viewed online along with other lidar coverage for the state by using the [DOGAMI Lidar Data Viewer](#).

More detailed coverage information for the Northeast Oregon project area is provided in this index map PDF:

http://www.oregongeology.org/pubs/ldq/Lidar_Series_Index_Map_NE_Oregon.pdf

Under the auspices of the [Oregon Lidar Consortium](#), these lidar data and data products were collected in whole or part through funding provided by the following — the U.S. Bureau of Reclamation (Boise, Idaho), the Oregon Department of Transportation, the Natural Resources Conservation Service, and the U.S. Geological Survey. TO learn more about how lidar data can be used, read the DOGAMI fact sheet [Lidar Data Acquisition, Uses, & Partners](#).

Lidar Data Quadrangle (LDQ) series publications are available on DVD and require specialty GIS software to view and use. LDQ series publications can be purchased directly via the [DOGAMI Lidar Data Viewer](#) web tool, or from the Nature of the Northwest Information Center (NNW), 800 NE Oregon Street, Suite 965, Portland, OR, 97232. You may also call NNW at (971) 673-2331 or order online at <http://www.naturenw.org>. There is a \$4.95 shipping and handling charge for all mailed items. For additional information, please contact the Nature of the Northwest Information Center.

Contact Information:

Oregon Department of Geology
Ian Madin, Chief Scientist
(971) 673-1542
ian.madin@state.or.us

Oregon Department of Geology
John English, Lidar Database Coordinator
(971) 673-1557
john.english@state.or.us

The Oregon Department of Geology and Mineral Industries is an independent agency of the State and has a broad responsibility in developing an understanding of the state's geologic resources and natural hazards. The Department then makes this information available to communities and individuals to help inform and reduce the risks from natural hazards, such as earthquakes, tsunamis, landslides, floods and volcanic eruptions. The Department assists in the formulation of state policy where an understanding of geologic materials, geologic resources, processes, and hazards is key to decision-making. The Department is also the lead state regulatory agency for mining, oil, gas and geothermal exploration, production and reclamation.

Learn more about Oregon's geology online: <http://www.OregonGeology.org>

###

DOGAMI's mission is to provide earth science information and regulation to make Oregon safe and prosperous.

Media contact: Carol DuVernois

carol.duvernois@state.or.us
800 NE Oregon St., #28,
Ste. 965
Portland, OR 97232
Phone: (971) 673-1555
Fax: (971) 673-1562
www.OregonGeology.org

Mineral Land Regulation and Reclamation Program

229 Broadalbin St. SW
Albany, OR 97321
Phone: (541) 967-2039
Fax: (541) 967-2075
info@mlrr.oregongeology.com
Gary W. Lynch,
Assistant Director

Coastal Field Office

313 SW 2nd, Ste. D
Newport, OR 97365
Phone: (541) 574-6642
Fax: (541) 265-5241
Jonathan C. Allan,
Coastal Team Leader

Eastern Oregon Field Office

Baker County Courthouse
1995 3rd St., Ste. 130
Baker City, OR 978149
Phone: (541) 523-3133
Fax: (541) 523-5992
Jason D. McLaughry,
Regional Geologist

Nature of the Northwest Information Center

800 NE Oregon St., Ste. 965
Portland, Oregon 97232
(971) 673-2331
Email: info@naturenw.org
Web: www.NatureNW.org
Donald J. Haines, Manager