

# OREGON DEPARTMENT OF GEOLOGY AND MINERAL INDUSTRIES

Vicki S. McConnell, State Geologist



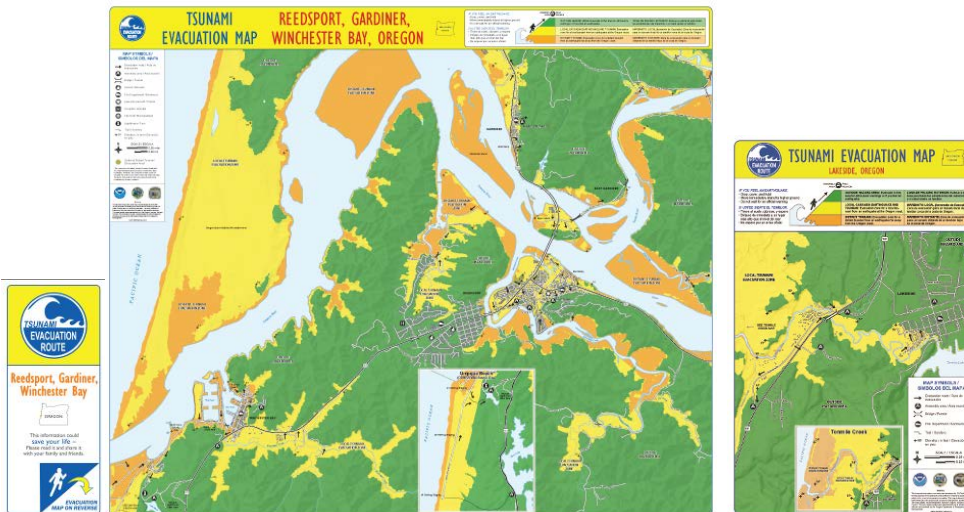
NEWS RELEASE: April 25, 2013

## Tsunami evacuation maps for Reedsport and Lakeside areas released

*Attend an upcoming rally to learn how to protect your family*

Portland, Oregon: The Oregon Department of Geology and Mineral Industries (DOGAMI) has released tsunami evacuation brochures for the communities of Reedsport, Gardiner, and Winchester Bay in coastal Douglas County, and Lakeside and Tenmile Creek in northern coastal Coos County.

The maps show modeled tsunami evacuation zones for both local-source (Cascadia Subduction Zone) and distant-source (such as from Alaska) tsunami scenarios. The maps also show evacuation routes and assembly areas.



*Reedsport, Gardiner, and Winchester Bay are on one map (middle), while Lakeside is on another (right). Evacuate from yellow and orange areas to green area.*

The evacuation brochures are available free for download from the <http://www.OregonGeology.org> and <http://www.OregonTsunami.org> websites.

### Upcoming Tsunami Readiness Rallies:

These events are free and open to the public.

- Get your new, free evacuation map
- Learn from Japan's devastating 2011 earthquake and tsunami
- Prepare for a tsunami in Oregon
- Talk with local readiness groups like CERT, American Red Cross, and more

*(over for more)*

*DOGAMI's mission is to provide earth science information and regulation to make Oregon safe and prosperous.*

**Media contact:**  
**Carol DuVernois**

carol.duvernois@state.or.us

800 NE Oregon St., #28,  
Ste. 965

Portland, OR 97232

Phone: (971) 673-1555

Fax: (971) 673-1562

[www.OregonGeology.org](http://www.OregonGeology.org)

### Mineral Land Regulation and Reclamation Program

229 Broadalbin St. SW  
Albany, OR 97321

Phone: (541) 967-2039

Fax: (541) 967-2075

[info@mlrr.oregongeology.com](mailto:info@mlrr.oregongeology.com)

Gary W. Lynch,  
Assistant Director

### Coastal Field Office

313 SW 2nd, Ste. D

Newport, OR 97365

Phone: (541) 574-6642

Fax: (541) 265-5241

Jonathan C. Allan,  
Coastal Team Leader

### Eastern Oregon Field Office

Baker County Courthouse

1995 3rd St., Ste. 130

Baker City, OR 978149

Phone: (541) 523-3133

Fax: (541) 523-5992

Jason D. McClaughry,  
Regional Geologist

### Nature of the Northwest Information Center

800 NE Oregon St., Ste. 965

Portland, Oregon 97232

(971) 673-2331

Email: [info@naturenw.org](mailto:info@naturenw.org)

Web: [www.NatureNW.org](http://www.NatureNW.org)

Donald J. Haines, Manager

*page 1 of 2*

## OREGON DEPARTMENT OF GEOLOGY AND MINERAL INDUSTRIES

### **Reedsport, Oregon: Thursday, April 25, 2013**

Pacific Auditorium, Reedsport Community Charter School, 2260 Longwood Drive

6:00 pm - Doors open, information tables

6:30 pm - Presentation by Oregon Department of Geology

Questions and answers, information tables

### **Hauser, Oregon: Tuesday, May 21, 2013**

Hauser Community Church, 69411 Wildwood Road, North Bend, OR 97459

6:00 pm - Doors open, information tables

6:30 pm - Presentation by Oregon Department of Geology

Questions and answers, information tables

Residents can volunteer for the *TsunamiSmart Neighbor* program, which involves teams conducting door-to-door outreach to distribute the new maps and inform the community how to prepare for and safely escape from tsunamis.

#### **Contact Information:**

Ian Madin, Chief Scientist

Oregon Department of Geology and Mineral Industries

telephone (971) 673-1542

email [ian.madin@dogami.state.or.us](mailto:ian.madin@dogami.state.or.us)

---

The Oregon Department of Geology and Mineral Industries is an independent agency of the State and has a broad responsibility in developing an understanding of the state's geologic resources and natural hazards. The Department then makes this information available to communities and individuals to help inform and reduce the risks from natural hazards, such as earthquakes, tsunamis, landslides, floods and volcanic eruptions. The Department assists in the formulation of state policy where an understanding of geologic materials, geologic resources, processes, and hazards is key to decision-making. The Department is also the lead state regulatory agency for mining, oil, gas and geothermal exploration, production and reclamation.

*DOGAMI's mission is to provide earth science information and regulation to make Oregon safe and prosperous.*

#### **Media contact:**

##### **Carol DuVernois**

carol.duvernois@state.or.us

800 NE Oregon St., #28,  
Ste. 965

Portland, OR 97232

Phone: (971) 673-1555

Fax: (971) 673-1562

[www.OregonGeology.org](http://www.OregonGeology.org)

#### **Mineral Land Regulation and Reclamation Program**

229 Broadalbin St. SW

Albany, OR 97321

Phone: (541) 967-2039

Fax: (541) 967-2075

[info@mlrr.oregongeology.com](mailto:info@mlrr.oregongeology.com)

Gary W. Lynch,

Assistant Director

#### **Coastal Field Office**

313 SW 2nd, Ste. D

Newport, OR 97365

Phone: (541) 574-6642

Fax: (541) 265-5241

Jonathan C. Allan,

Coastal Team Leader

#### **Eastern Oregon Field Office**

Baker County Courthouse

1995 3rd St., Ste. 130

Baker City, OR 978149

Phone: (541) 523-3133

Fax: (541) 523-5992

Jason D. McLaughry,

Regional Geologist

#### **Nature of the Northwest Information Center**

800 NE Oregon St., Ste. 965

Portland, Oregon 97232

(971) 673-2331

Email: [info@naturenw.org](mailto:info@naturenw.org)

Web: [www.NatureNW.org](http://www.NatureNW.org)

Donald J. Haines, Manager

*page 2 of 2*